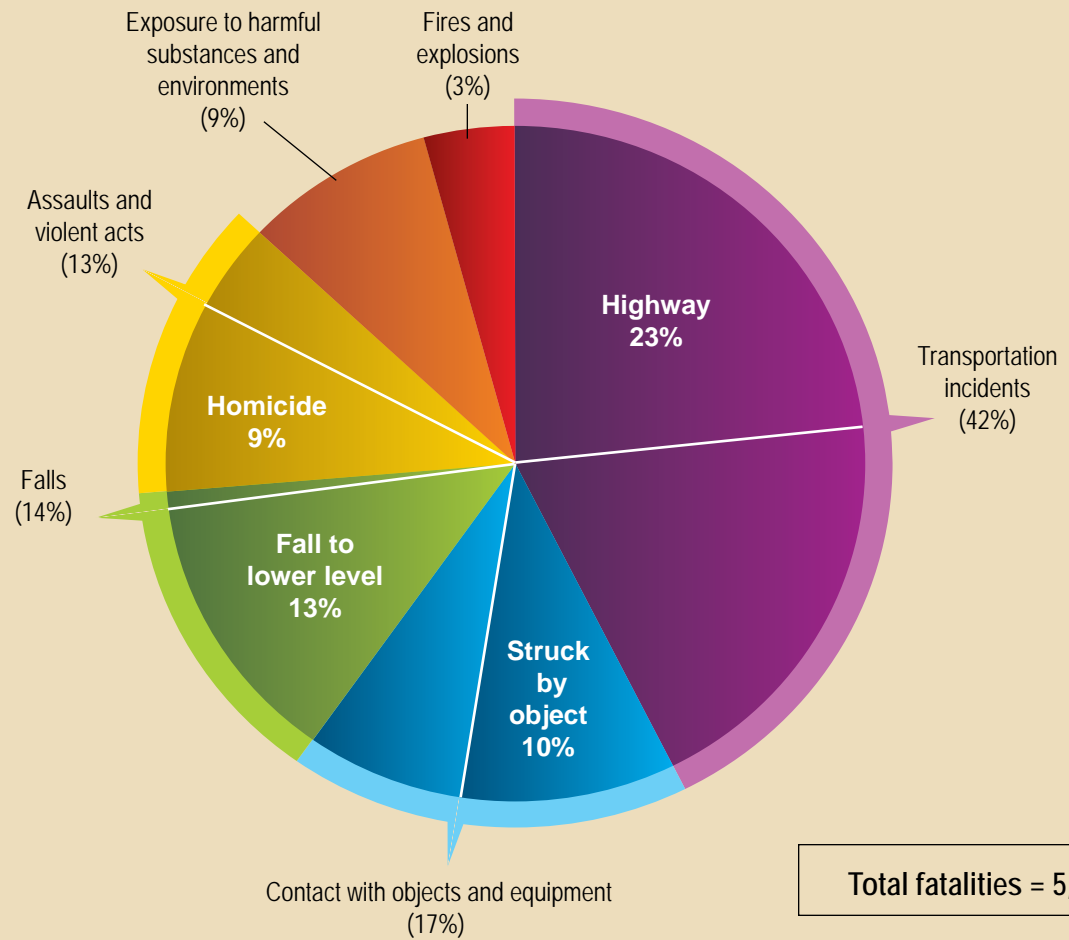




A number of different types of events led to fatal work injuries in 2006. Highway incidents accounted for the largest number of fatal events—almost 1 out of every 4 fatalities in 2006.

Falls accounted for another 14 percent of the fatal injuries recorded in 2006. Workers who were fatally injured after being struck by an object accounted for 10 percent of all fatal work injuries, while homicides accounted for 9 percent

## Manner in which workplace fatalities occurred, 2006



NOTE: Percentages may not add to totals because of rounding.  
SOURCE: U.S. Bureau of Labor Statistics, U.S. Department of Labor, 2009.

3  
C  
H  
A  
R  
T