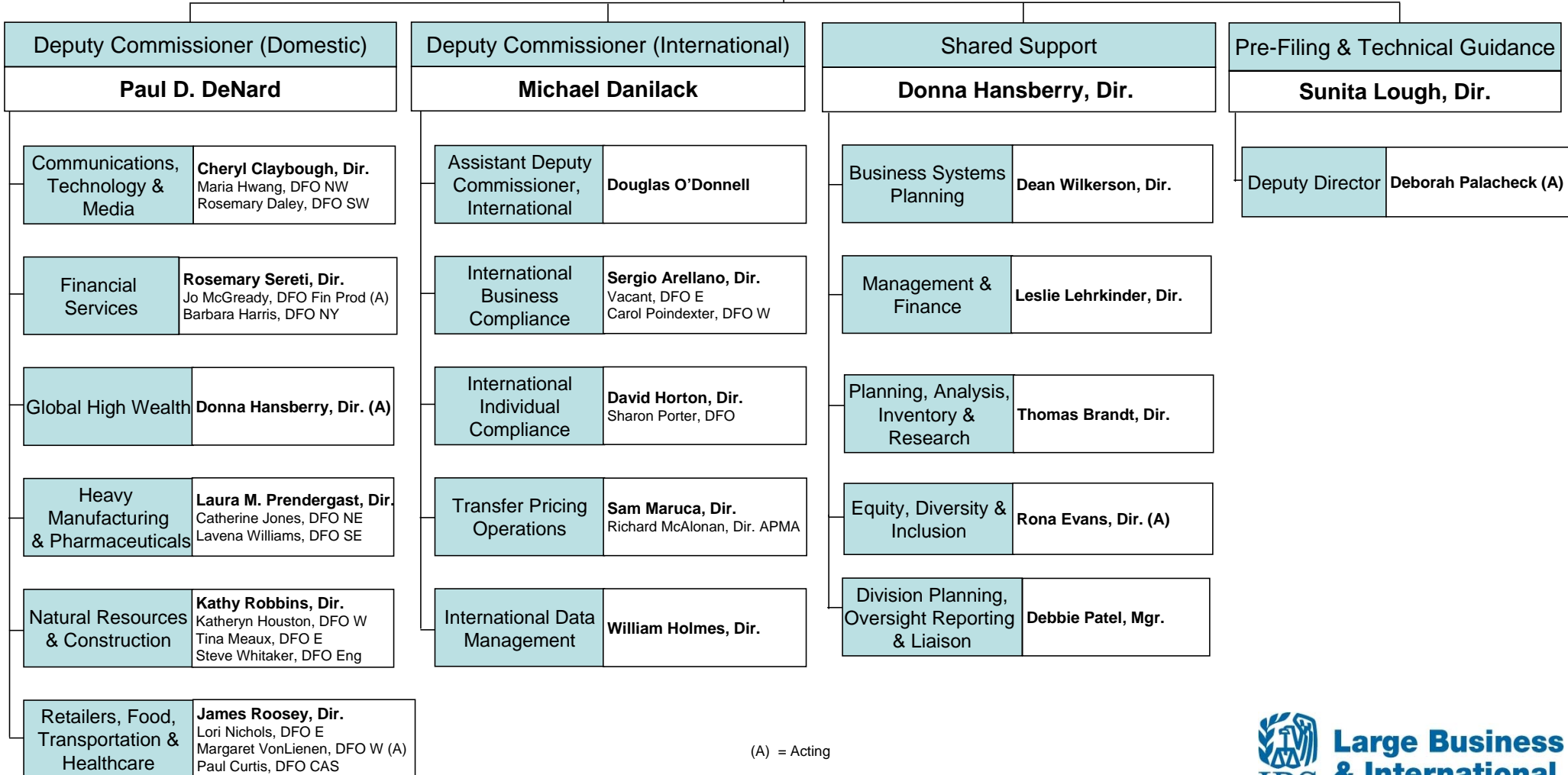


LB&I Organization Chart

LB&I Commissioner

Heather C. Maloy

- Elizabeth Wagner, Sr. Advisor to LB&I Commissioner
- Nick Gaudio, Executive Assistant (Commissioner)
- Janice Larkin, Executive Assistant (Domestic) (A)
- Deborah Phillips, Executive Assistant (International) (A)
- Ronald Sanchez, Executive Assistant (Shared Support)
- Ed Carroll, Executive Assistant (PFTG)



(A) = Acting

Rev10/4/2012

