

Roy Lichtenstein: A Retrospective

October 14, 2012 - January 13, 2013

Important: The images displayed on this page are for reference only and are not to be reproduced in any media. To obtain images and permissions for print or digital reproduction please provide your name, press affiliation and all other information as required (*) utilizing the order form at the end of this page.

Digital images will be sent via e-mail.

Please include a brief description of the kind of press coverage planned and your phone number so that we may contact you.

Usage: Images are provided exclusively to the press, and only for purposes of publicity for the duration of the exhibition at the National Gallery of Art. All published images must be accompanied by the credit line provided and with copyright information, as noted.

Cat. No. 1 / File Name: 3287-012.jpg

Roy Lichtenstein

Untitled, 1959

oil on canvas

overall: 86.5 x 71.3 cm (34 1/16 x 28 1/16 in.)

Private collection

© Estate of Roy Lichtenstein



Cat. No. 3

Roy Lichtenstein

Untitled, c. 1960

oil on canvas

overall: 60.3 x 50.8 cm (23 3/4 x 20 in.)

Private collection

© Estate of Roy Lichtenstein

Cat. No. 4

Roy Lichtenstein

Brushstroke with Still Life IV, 1996

oil and Magna on canvas

overall: 86.4 x 71.1 cm (34 x 28 in.)

Courtesy of Gagosian Gallery

© Estate of Roy Lichtenstein

Cat. No. 6

Roy Lichtenstein

Brushstroke Abstraction II, 1996

oil and Magna on canvas

overall: 76.2 x 68.6 cm (30 x 27 in.)

Private collection

© Estate of Roy Lichtenstein

Cat. No. 7
Roy Lichtenstein
Brushstroke with Still Life VII, 1996
oil and Magna on canvas
overall: 76.2 x 76.2 cm (30 x 30 in.)
Lenhardt Collection, Arizona
© Estate of Roy Lichtenstein

Cat. No. 8 / File Name: 3287-002.jpg
Roy Lichtenstein
Look Mickey, 1961
oil on canvas
Overall: 121.9 x 175.3 cm (48 x 69 in.)
ramed: 123.5 x 176.9 x 5.1 cm (48 5/8 x 69 5/8 x 2 in.)
National Gallery of Art, Washington, Gift of Roy and Dorothy Lichtenstein in Honor of the 50th Anniversary of the National Gallery of Art
© Board of Trustees, National Gallery of Art, Washington



Cat. No. 10
Roy Lichtenstein
Step-on Can with Leg, 1961
oil on canvas
panel: 82.6 x 67.3 cm (32 1/2 x 26 1/2 in.)
Fondation Louis Vuitton Pour la Creation
© Estate of Roy Lichtenstein

Cat. No. 11 / File Name: 3287-253.jpg
Roy Lichtenstein
Keds, 1961
oil on canvas
overall: 123.2 x 88.3 cm (48 1/2 x 34 3/4 in.)
The Robert B. Mayer Family Collection, Chicago
© Estate of Roy Lichtenstein



Cat. No. 12 / File Name: 3287-023.jpg
Roy Lichtenstein
The Ring (Engagement), 1962
oil on canvas
overall: 121.9 x 177.8 cm (48 x 70 in.)
Stefan T. Edlis Collection
© Estate of Roy Lichtenstein



Cat. No. 14
Roy Lichtenstein
Spray, 1962
oil on canvas
overall: 91.5 x 173.5 cm (36 x 68 in.)
Staatsgalerie Stuttgart
© Estate of Roy Lichtenstein

Cat. No. 15
Roy Lichtenstein
Cup of Coffee, 1961
oil on canvas
overall: 51.1 x 40.6 cm (20 1/8 x 16 in.)
Private collection
© Estate of Roy Lichtenstein

Cat. No. 16 / File Name: 3287-160.jpg

Roy Lichtenstein

Hot Dog with Mustard, 1963

oil and Magna on canvas

overall: 45.7 x 121.9 cm (18 x 48 in.)

Aaron I. Fleischman

© Estate of Roy Lichtenstein



Cat. No. 18

Roy Lichtenstein

Portable Radio, 1962

oil on canvas with aluminum, and leather

overall: 43.8 x 50.8 cm (17 1/4 x 20 in.)

The Doris and Donald Fisher Collection, San Francisco

© Estate of Roy Lichtenstein

Cat. No. 19

Roy Lichtenstein

The Ring, 1962

oil on canvas

overall: 45.7 x 45.7 cm (18 x 18 in.)

Collection Anstiss and Ronald Krueck

© Estate of Roy Lichtenstein

Cat. No. 20

Roy Lichtenstein

Golf Ball, 1962

oil on canvas

overall: 81.3 x 81.3 cm (32 x 32 in.)

Private collection

© Estate of Roy Lichtenstein

Cat. No. 21 / File Name: 3287-038.jpg

Roy Lichtenstein

Tire, 1962

oil on canvas

overall: 172.7 x 142.24 cm (68 x 56 in.)

The Doris and Donald Fisher Collection, San Francisco, and the Museum of Modern Art, New York

© Estate of Roy Lichtenstein



Cat. No. 22

Roy Lichtenstein

Desk Calendar, 1962

oil on canvas

overall: 123.2 x 173.4 cm (48 1/2 x 68 1/4 in.)

The Museum of Contemporary Art, Los Angeles, The Panza Collection

© Estate of Roy Lichtenstein

Cat. No. 23

Roy Lichtenstein

Large Jewels, 1963

oil and Magna on canvas

overall: 172.7 x 91.4 cm (68 x 36 in.)

Museum Ludwig, Cologne, Ludwig Gift

© Estate of Roy Lichtenstein

Cat. No. 24 / File Name: 3287-041.jpg
Roy Lichtenstein
Ball of Twine, 1963
oil and Magna on canvas
overall: 101.6 x 91.4 cm (40 x 36 in.)
Private collection
© Estate of Roy Lichtenstein



Cat. No. 25
Roy Lichtenstein
Magnifying Glass, 1963
oil on canvas
overall: 40.6 x 40.6 cm (16 x 16 in.)
Private collection
© Estate of Roy Lichtenstein

Cat. No. 26 / File Name: 3287-189.jpg
Roy Lichtenstein
Compositions I, 1964
Magna on canvas
overall: 172.7 x 147.3 cm (68 x 58 in.)
MMK Museum für Moderne Kunst, Frankfurt am Main, Former Karl Ströher Collection, Darmstadt
© Estate of Roy Lichtenstein



Cat. No. 27
Roy Lichtenstein
Ceramic Sculpture 7, 1965
glazed ceramic
overall: 24.1 x 22.9 x 17.8 cm (9 1/2 x 7 x 9 7/8 in.)
Courtesy Mitchell-Innes & Nash
© Estate of Roy Lichtenstein

Cat. No. 28
Roy Lichtenstein
Black and White Head, 1966
glazed ceramic
height: 15 in. (38.1 cm)
Saint Louis Art Museum, Eliza McMillan Trust and Partial Gift of Gerhard J. Petzall
© Estate of Roy Lichtenstein

Cat. No. 29 / File Name: 3287-024.jpg
Roy Lichtenstein
Masterpiece, 1962
oil on canvas
overall: 137.2 x 137.2 cm (54 x 54 in.)
Agnes Gund Collection, New York
© Estate of Roy Lichtenstein



Cat. No. 30
Roy Lichtenstein
Takka Takka, 1962
oil and Magna on canvas
overall: 142.2 x 172.7 cm (56 x 68 in.)
Museum Ludwig, Cologne, Ludwig Gift
© Estate of Roy Lichtenstein

Cat. No. 32 / File Name: 3287-028.jpg

Roy Lichtenstein

***Drowning Girl*, 1963**

oil and Magna on canvas

overall: 171.6 x 169.5 cm (67 9/16 x 66 3/4 in.)

The Museum of Modern Art, New York, Philip Johnson Fund (by exchange) and Gift of Mr. and Mrs. Bagley Wright, 1971

© Estate of Roy Lichtenstein



Cat. No. 34 / File Name: 3287-046.jpg

Roy Lichtenstein

***Torpedo...LOS!*, 1963**

oil and Magna on canvas

overall: 172.7 x 203.2 cm (68 x 80 in.)

Collection Simonyi

© Estate of Roy Lichtenstein



Cat. No. 35

Roy Lichtenstein

***Bratatat!*, 1962**

oil on canvas

overall: 116.8 x 86.4 cm (46 x 34 in.)

Collection Simonyi

© Estate of Roy Lichtenstein

Cat. No. 36 / File Name: 3287-045.jpg

Roy Lichtenstein

***Whaam!*, 1963**

oil and Magna on canvas

overall: 172.7 x 421.6 cm (68 x 166 in.), two panels

Tate, London, Purchased 1966

© Estate of Roy Lichtenstein



Cat. No. 37 / File Name: 3287-129.jpg

Roy Lichtenstein

***Ohhh...Alright...*, 1964**

oil and Magna on canvas

overall: 91.4 x 96.5 cm (36 x 38 in.)

Private collection

© Estate of Roy Lichtenstein



Cat. No. 38 / File Name: 3287-032.jpg

Roy Lichtenstein

***Oh, Jeff...I Love You, Too...But...*, 1964**

oil and Magna on canvas

overall: 121.9 x 121.9 cm (48 x 48 in.)

Collection Simonyi

© Estate of Roy Lichtenstein



Cat. No. 39

Roy Lichtenstein

***We Rose Up Slowly*, 1964**

oil and Magna on canvas

2 panels: 174.5 x 62.3 cm (68 11/16 x 24 1/2 in.); 174.5 x 234.5 cm (69 x 92 in.)

MMK Museum für Moderne Kunst, Frankfurt am Main, Former Karl Ströher Collection, Darmstadt

© Estate of Roy Lichtenstein

Cat. No. 40 / File Name: 3287-149.jpg
Roy Lichtenstein
As I Opened Fire, 1964
oil and Magna on canvas
panel: 172.7 x 142.2 cm (68 x 56 in.)
Stedelijk Museum, Amsterdam
© Estate of Roy Lichtenstein



Cat. No. 40 / File Name: 3287-150.jpg
Roy Lichtenstein
As I Opened Fire (Panel 2 of 3), 1964
oil and Magna on canvas
panel: 172.7 x 142.2 cm (68 x 56 in.)
Stedelijk Museum, Amsterdam
© Estate of Roy Lichtenstein



Cat. No. 40 / File Name: 3287-151.jpg
Roy Lichtenstein
As I Opened Fire (Panel 3 of 3), 1964
oil and Magna on canvas
panel: 172.7 x 142.2 cm (68 x 56 in.)
Stedelijk Museum, Amsterdam
© Estate of Roy Lichtenstein



Cat. No. 41
Roy Lichtenstein
M-Maybe, 1965
oil and Magna on canvas
overall: 152.4 x 152.4 cm (60 x 60 in.)
Museum Ludwig, Cologne, Ludwig Gift
© Estate of Roy Lichtenstein

Cat. No. 42
Roy Lichtenstein
Head with Blue Shadow, 1965
glazed ceramic
overall: 38.1 x 21 x 20.3 cm (15 x 8 1/4 x 8 in.)
Raymond and Patsy Nasher Collection, Nasher Sculpture Center, Dallas
© Estate of Roy Lichtenstein

Cat. No. 43
Roy Lichtenstein
Explosion, 1965
oil and Magna on canvas
overall: 142.2 x 121.9 cm (56 x 48 in.)
Private collection
© Estate of Roy Lichtenstein

Cat. No. 44
Roy Lichtenstein
Explosion II, 1965
porcelain enamel on steel
overall: 223.5 x 152.4 cm (88 x 60 in.)
Collection of the Blavatnik Family
© Estate of Roy Lichtenstein

Cat. No. 45 / File Name: 3287-050.jpg
Roy Lichtenstein
Wall Explosion II, 1965
porcelain enamel on steel
overall: 170.2 x 188 x 10.2 cm (67 x 74 x 4 in.)
Tate, London, Purchased 1980
© Estate of Roy Lichtenstein



Cat. No. 46
Roy Lichtenstein
Varoom!, 1963
oil and Magna on canvas
overall: 142.2 x 142.2 cm (56 x 56 in.)
Ryobi Foundation
© Estate of Roy Lichtenstein

Cat. No. 47 / File Name: 3287-065.jpg
Roy Lichtenstein
Brushstrokes, 1965
oil and Magna on canvas
overall: 122.5 x 122.5 cm (48 1/4 x 48 1/4 in.)
Private collection
© Estate of Roy Lichtenstein



Cat. No. 48 / File Name: 3287-064.jpg
Roy Lichtenstein
Little Big Painting, 1965
oil and Magna on canvas
overall: 172.7 x 203.2 cm (68 x 80 in.)
Whitney Museum of American Art, New York, Purchase, with Funds from the Friends of the Whitney Museum of American Art
© Estate of Roy Lichtenstein



Cat. No. 49 / File Name: 3287-066.jpg
Roy Lichtenstein
Brushstroke with Spatter, 1966
oil and Magna on canvas
overall: 121.9 x 152.4 cm (48 x 60 in.)
The Art Institute of Chicago, Barbara Neff Smith and Solomon Byron Smith Purchase Fund
© Estate of Roy Lichtenstein



Cat. No. 50 / File Name: 3287-138.jpg
Roy Lichtenstein
Sunrise, 1965
oil and Magna on canvas
overall: 91.4 x 172.7 cm (36 x 68 in.)
Private collection
© Estate of Roy Lichtenstein



Cat. No. 51
Roy Lichtenstein
Seascape, 1964
oil on canvas
overall: 76.2 x 91.4 cm (30 x 36 in.)
Private collection
© Estate of Roy Lichtenstein

Cat. No. 52
Roy Lichtenstein
***White Cloud*, 1964**
oil and Magna on canvas
overall: 172.7 x 203.2 cm (68 x 80 in.)
Irving Blum
© Estate of Roy Lichtenstein

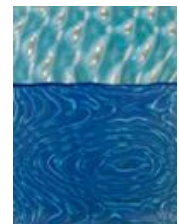
Cat. No. 53
Roy Lichtenstein
***Perforated Seascape #1 (Blue)*, 1965**
porcelain enamel on steel
overall: 72.4 x 107.7 cm (28 1/2 x 42 in.)
Aaron I. Fleischman
© Estate of Roy Lichtenstein

Cat. No. 54
Roy Lichtenstein
***Sunset*, 1964**
oil and Magna on canvas
overall: 50.8 x 61 cm (20 x 24 in.)
Private collection, Swampscott, Courtesy Mitchell- Innes & Nash
© Estate of Roy Lichtenstein

Cat. No. 55
Roy Lichtenstein
***Sea Shore*, 1964**
oil and Magna on Plexiglas
overall: 61 x 76.2 cm (24 x 30 in.)
Private collection
© Estate of Roy Lichtenstein

Cat. No. 56
Roy Lichtenstein
***Seascape*, c. 1965**
oil and Magna on canvas
overall: 172.7 x 203.2 cm (68 x 80 in.)
Private collection
© Estate of Roy Lichtenstein

Cat. No. 57 / File Name: 3287-168.jpg
Roy Lichtenstein
***Seascape*, 1965**
Rowlux and cut-and-pasted painted paper on board
overall: 75.1 x 55.6 cm (29 9/16 x 21 7/8 in.)
Private collection
© Estate of Roy Lichtenstein



Cat. No. 58
Roy Lichtenstein
***Pink Seascape*, 1965**
Rowlux and cut-and-pasted painted paper on board
overall: 71.1 x 54.6 cm (28 x 21 1/2 in.)
Private collection, Courtesy Matthew Marks Gallery, New York
© Estate of Roy Lichtenstein

Cat. No. 59 / File Name: 3287-061.jpg

Roy Lichtenstein

Seascape, 1964

oil and Magna on canvas

overall: 121.9 x 172.7 cm (48 x 68 in.)

Collection Viktor and Marianne Langen

© Estate of Roy Lichtenstein



Cat. No. 61 / File Name: 3287-157.jpg

Roy Lichtenstein

Washington Crossing the Delaware I, c. 1951

oil on canvas

overall: 66 x 81.3 cm (26 x 32 in.)

The Roy Lichtenstein Foundation Collection

© Estate of Roy Lichtenstein



Cat. No. 62

Roy Lichtenstein

George Washington, 1962

oil on canvas

129.5 x 96.5 cm (51 x 38 in)

Private collection

© Estate of Roy Lichtenstein

Cat. No. 63 / File Name: 3287-067.jpg

Roy Lichtenstein

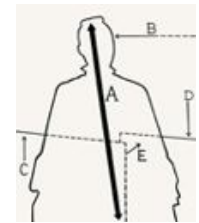
Portrait of Madame Cézanne, 1962

Magna on canvas

overall: 172.7 x 142.2 cm (68 x 56 in.)

Jason Blum

© Estate of Roy Lichtenstein



Cat. No. 64 / File Name: 3287-068.jpg

Roy Lichtenstein

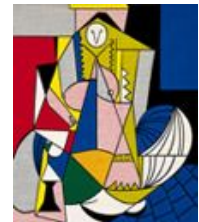
Femme d'Alger, 1963

oil on canvas

overall: 203.2 x 172.7 cm (80 x 68 in.)

The Eli and Edythe L. Broad Collection, Los Angeles

© Estate of Roy Lichtenstein



Cat. No. 65 / File Name: 3287-140.jpg

Roy Lichtenstein

Non-Objective I, 1964

oil and Magna on canvas

overall: 142.9 x 121.9 cm (56 1/4 x 48 in.)

The Eli and Edythe L. Broad Collection, Los Angeles

© Estate of Roy Lichtenstein



Cat. No. 66

Roy Lichtenstein

Still Life with Goldfish, 1972

oil and Magna on canvas

overall: 132.1 x 106.7 cm (52 x 42 in.)

Private collection

© Estate of Roy Lichtenstein

Cat. No. 67 / File Name: 3287-070.jpg

Roy Lichtenstein

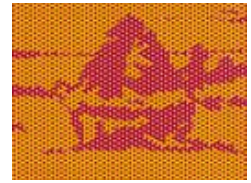
Haystack, 1969

oil on canvas

overall: 45.7 x 61 cm (18 x 24 in.)

The Ruben Family

© Estate of Roy Lichtenstein



Cat. No. 68 / File Name: 3287-071.jpg

Roy Lichtenstein

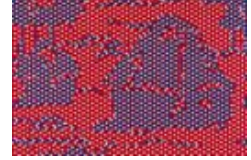
Haystacks, 1969

oil and Magna on canvas

overall: 40.6 x 61 cm (16 x 24 in.)

The Ruben Family

© Estate of Roy Lichtenstein



Cat. No. 69 / File Name: 3287-154.jpg

Roy Lichtenstein

Rouen Cathedral, Set 5 (panel 1 of 3), 1969

oil and Magna on canvas

panel: 160 x 106.7 cm (63 x 42 in.)

San Francisco Museum of Modern Art, Gift of Harry W. and Mary Margaret Anderson

© Estate of Roy Lichtenstein



Cat. No. 69 / File Name: 3287-155.jpg

Roy Lichtenstein

Rouen Cathedral, Set 5 (panel 2 of 3), 1969

oil and Magna on canvas

panel: 160 x 106.7 cm (63 x 42 in.)

San Francisco Museum of Modern Art, Gift of Harry W. and Mary Margaret Anderson

© Estate of Roy Lichtenstein



Cat. No. 69 / File Name: 3287-156.jpg

Roy Lichtenstein

Rouen Cathedral, Set 5 (panel 3 of 3), 1969

oil and Magna on canvas

panel: 160 x 106.7 cm (63 x 42 in.)

San Francisco Museum of Modern Art, Gift of Harry W. and Mary Margaret Anderson

© Estate of Roy Lichtenstein



Cat. No. 70

Roy Lichtenstein

Grapes, 1972

oil and Magna on canvas

overall: 55.9 x 71.1 cm (20 x 28 in.)

Aaron I. Fleischman

© Estate of Roy Lichtenstein

Cat. No. 71

Roy Lichtenstein

Still Life with Glass and Peeled Lemon, 1972

oil and Magna on canvas

overall: 106.7 x 121.9 cm (42 x 48 in.)

The Helman Collection

© Estate of Roy Lichtenstein

Cat. No. 72
Roy Lichtenstein
Unfurled (after Morris Louis), 1973
Magna on canvas
overall: 76.2 x 91.4 cm (30 x 36 in.)
Private collection
© Estate of Roy Lichtenstein

Cat. No. 73
Roy Lichtenstein
The Atom, 1975
oil and Magna on canvas
overall: 106.7 x 91.4 cm (42 x 36 in.)
Private collection
© Estate of Roy Lichtenstein

Cat. No. 74
Roy Lichtenstein
Purist Painting with Pitcher, Glass, and Classical Column, 1975
oil and Magna on canvas
overall: 152.4 x 101.6 cm (60 x 40 in.)
Private collection
© Estate of Roy Lichtenstein

Cat. No. 75 / File Name: 3287-001.jpg
Roy Lichtenstein
Cubist Still Life, 1974
oil and Magna on canvas
overall: 228.6 x 173.2 cm (90 x 68 3/16 in.)
National Gallery of Art, Washington, Gift of Lila Acheson Wallace
© Estate of Roy Lichtenstein



Cat. No. 76
Roy Lichtenstein
Little Landscape, 1979
oil and Magna on canvas
overall: 91.4 x 121.9 cm (36 x 48 in.)
Private collection
© Estate of Roy Lichtenstein

Cat. No. 77
Roy Lichtenstein
Frolic, 1977
oil and Magna on canvas
overall: 203.2 x 167.6 cm (80 x 66 in.)
Courtesy of Gagosian Gallery
© Estate of Roy Lichtenstein

Cat. No. 78
Roy Lichtenstein
Landscape with Figures and Rainbow, 1980
oil and Magna on canvas
overall: 213.4 x 304.8 cm (84 x 120 in.)
Museum Ludwig, Cologne, Ludwig Gift
© Estate of Roy Lichtenstein

Cat. No. 79 / File Name: 3287-211.jpg
Roy Lichtenstein
Amerind Figure, 1981
patinated bronze
overall: 166.4 x 52.1 x 34.3 cm (65 1/2 x 20 1/2 x 13 1/2 in.)
Private collection
© Estate of Roy Lichtenstein



Cat. No. 80 / File Name: 3287-212.jpg
Roy Lichtenstein
Archaic Head VI, 1988
patinated bronze
overall: 148.6 x 47.6 x 25.4 cm (58 1/2 x 18 3/4 x 10 in.)
Private collection
© Estate of Roy Lichtenstein



Cat. No. 81
Roy Lichtenstein
Woman III, 1982
oil and Magna on canvas
overall: 203.2 x 142.2 cm (80 x 56 in.)
Stefan T. Edlis Collection
© Estate of Roy Lichtenstein

Cat. No. 82
Roy Lichtenstein
Sleeping Muse, 1983
patinated bronze
overall: 64.8 x 87 x 10.2 cm (25 1/2 x 34 1/4 x 4 in.)
Private collection
© Estate of Roy Lichtenstein

Cat. No. 83
Roy Lichtenstein
Plus and Minus VI, 1988
oil and Magna on canvas
overall: 127 x 96.5 cm (50 x 38 in.)
Private collection
© Estate of Roy Lichtenstein

Cat. No. 84 / File Name: 3287-081.jpg
Roy Lichtenstein
Laocoön, 1988
oil and Magna on canvas
overall: 304.8 x 259.1 cm (120 x 102 in.)
Private collection
© Estate of Roy Lichtenstein



Cat. No. 85
Roy Lichtenstein
Reflections on "Interior with Girl Drawing", 1990
oil and Magna on canvas
overall: 191.4 x 274.3 cm (75 1/4 x 108 in.)
The Eli and Edythe L. Broad Collection, Los Angeles
© Estate of Roy Lichtenstein

:

Cat. No. 86

Roy Lichtenstein

Modern Painting I, 1966

oil and Magna on canvas

unframed: 203.2 x 172.7 cm (80 x 68 in.)

framed: 205.11 x 174.63 cm (80 3/4 x 68 3/4 in.)

Frederick R. Weisman Art Foundation, Los Angeles

© Estate of Roy Lichtenstein

Cat. No. 87

Roy Lichtenstein

Modern Sculpture, 1967

brass and mirror

overall: 182.9 x 78.7 x 52.1 cm (72 x 31 x 20 1/2 in.)

San Francisco Museum of Modern Art, Bequest of Marcia Simon Weisman

© Estate of Roy Lichtenstein

Cat. No. 88

Roy Lichtenstein

Modern Painting Triptych, 1967

oil and Magna on canvas

overall: 91.4 x 274.3 cm (36 x 108 in.)

Collection Neil G. Bluhm

© Estate of Roy Lichtenstein

Cat. No. 89

Roy Lichtenstein

Modern Painting with Division, 1967

oil and Magna on canvas

overall: 106.7 x 213.4 cm (42 x 84 in.)

Private collection

© Estate of Roy Lichtenstein

Cat. No. 90

Roy Lichtenstein

Modern Sculpture with Glass Wave, 1967

brass and glass

overall: 231.8 x 73.8 x 70.1 cm (91 1/4 x 29 1/16 x 27 5/8 in.)

The Museum of Modern Art, New York, Gift of Mr. and Mrs. Richard L. Selle, 1976

© Estate of Roy Lichtenstein

Cat. No. 91

Roy Lichtenstein

Modern Painting with Bolt, 1967

oil and Magna on canvas

overall: 173.2 x 173.5 cm (68 3/16 x 68 5/16 in.)

The Museum of Modern Art, New York, The Sidney and Harriet Janis Collection, 1967

© Estate of Roy Lichtenstein

Cat. No. 92

Roy Lichtenstein

Modern Sculpture (Maquette), circa 1968

brass

overall: 72.4 x 135.9 x 24.1 cm (28 1/2 x 53 1/2 x 9 1/2 in.)

Detroit Institute of Arts, Gift of the Artist

© Estate of Roy Lichtenstein

:

Cat. No. 93 / File Name: 3287-201.jpg

Roy Lichtenstein

Modern Sculpture with Velvet Rope, 1968

brass and velvet rope

2 parts: 211.5 x 66 x 38.1 cm (83 1/4 x 26 x 15 in.) and 149.9 x 63.5 x 38.1 cm (59 x 25 x 15 in.)

Private collection

© Estate of Roy Lichtenstein



Cat. No. 94

Roy Lichtenstein

Mirror # 1 (Oval 60" x 48"), 1969

oil and Magna on canvas

overall: 152.4 x 123.2 (60 x 48 1/2 in.)

The Eli and Edythe L. Broad Collection, Los Angeles

© Estate of Roy Lichtenstein

Cat. No. 95

Roy Lichtenstein

Mirror #1 (Oval 48" x 32"), 1970

oil and Magna on canvas

overall: 121.9 x 81.3 cm (48 x 32 in.)

Private collection

© Estate of Roy Lichtenstein

Cat. No. 96 / File Name: 3287-209.jpg

Roy Lichtenstein

Mirror #1 (48" Diameter), 1970

oil and Magna on canvas

diameter: 122.6 cm (48 1/4 in.)

Nancy and Robert Magoon

© Estate of Roy Lichtenstein



Cat. No. 97

Roy Lichtenstein

Mirror #2 (Six Panels), 1970

oil and Magna on canvas

overall: 243.8 x 274.3 cm (96 x 108 in.)

San Francisco Museum of Modern Art, Gift of Harry W. and Mary Margaret Anderson

© Estate of Roy Lichtenstein

Cat. No. 98 / File Name: 3287-098.jpg

Roy Lichtenstein

Mirror #3 (Six Panels), 1971

oil and Magna on canvas

overall: 304.8 x 335.3 cm (120 x 132 in.)

The Art Institute of Chicago, Anstiss and Ronald Krueck Fund for Contemporary Art, facilitated by the Roy Lichtenstein Foundation

© Estate of Roy Lichtenstein



Cat. No. 99

Roy Lichtenstein

Mirror #5 (36" diameter), 1971

Magna on canvas

diameter: 91.4 cm (36 in.)

Private collection

© Estate of Roy Lichtenstein

Cat. No. 100
Roy Lichtenstein
Mirror # 6 (36" diameter), 1971
oil and Magna on canvas
diameter: 91.4 cm (36 in.)
Private collection
© Estate of Roy Lichtenstein

Cat. No. 101 / File Name: 3287-100.jpg
Roy Lichtenstein
Self-Portrait, 1978
oil and Magna on canvas
overall: 177.8 x 137.2 cm (70 x 54 in.)
Kravis Collection
© Estate of Roy Lichtenstein



Cat. No. 102
Roy Lichtenstein
Entablature #8, 1972
oil and Magna on canvas
overall: 76.2 x 609.6 cm (30 x 240 in.)
Private collection
© Estate of Roy Lichtenstein

Cat. No. 103
Roy Lichtenstein
Entablature, 1975
oil, Magna, and sand with aluminum powder and Magna medium on canvas
overall: 137.2 x 548.6 cm (54 x 216 in.)
Private collection
© Estate of Roy Lichtenstein

Cat. No. 104 / File Name: 3287-104.jpg
Roy Lichtenstein
Artist's Studio "Look Mickey", 1973
oil, Magna, and sand with aluminum powder and Magna medium on canvas
overall: 243.8 x 325.1 cm (96 x 128 in.)
Collection Walker Art Center, Minneapolis, Gift of Judy and Kenneth Dayton and the T.B. Walker Foundation, 1981
© Estate of Roy Lichtenstein



Cat. No. 105
Roy Lichtenstein
Artist's Studio with Model, 1974
oil and Magna on canvas
overall: 243.8 x 325.1 cm (96 x 128 in.)
Collection of Irma and Norman Braman, Miami
© Estate of Roy Lichtenstein

Cat. No. 106
Roy Lichtenstein
Artist's Studio "The Dance", 1974
oil and Magna on canvas
overall: 244.3 x 325.5 cm (96 3/16 x 128 1/8 in.)
The Museum of Modern Art, New York, Gift of Mr. and Mrs. S.I. Newhouse, Jr., 1990
© Estate of Roy Lichtenstein

Cat. No. 107
Roy Lichtenstein
Artist's Studio "Foot Medication", 1974
oil and Magna on canvas
overall: 243.8 x 325.1 cm (96 x 128 in.)
Stefan T. Edlis Collection
© Estate of Roy Lichtenstein

Cat. No. 108
Roy Lichtenstein
Perfect Painting, 1978
oil and Magna on canvas
overall: 101.6 x 127 cm (40 x 50 in.)
Private collection
© Estate of Roy Lichtenstein

Cat. No. 109
Roy Lichtenstein
Perfect Painting, 1986
oil and Magna on canvas
overall: 178.8 x 254.3 cm (70 3/8 x 100 1/8 in.)
The Broad Art Foundation, Santa Monica
© Estate of Roy Lichtenstein

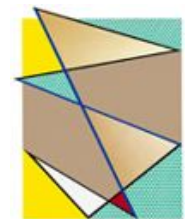
Cat. No. 110
Roy Lichtenstein
Imperfect Sculpture, 1995
stained cast iron and painted stainless steel plates
overall: 78.11 x 88.27 x 12.7 cm (30 3/4 x 34 3/4 x 5 in.)
Private collection
© Estate of Roy Lichtenstein

Cat. No. 111
Roy Lichtenstein
Imperfect Painting, 1986
oil and Magna on canvas
overall: 228.6 x 157.5 cm (90 x 62 in.)
Collection of Kenneth and Judy Dayton
© Estate of Roy Lichtenstein

Cat. No. 112 / File Name: 3287-152.jpg
Roy Lichtenstein
Imperfect Painting (Gold) (left panel), 1987
oil and Magna on canvas
overall: 161.6 x 275 cm (63 5/8 x 108 1/4 in.) (irregular)
Private collection
© Estate of Roy Lichtenstein



Cat. No. 112 / File Name: 3287-153.jpg
Roy Lichtenstein
Imperfect Painting (Gold) (right panel), 1987
oil and Magna on canvas
overall: 161.6 x 275 cm (63 5/8 x 108 1/4 in.) (irregular)
Private collection
© Estate of Roy Lichtenstein



Cat. No. 114

Roy Lichtenstein

Galatea, 1990

painted and patinated bronze

overall: 226.1 x 81.3 x 48.3 cm (89 x 32 x 19 in.)

Private collection

© Estate of Roy Lichtenstein

Cat. No. 115 / File Name: 3287-260.jpg

Roy Lichtenstein

Nude with Street Scene, 1995

oil and Magna on canvas

overall: 121.9 x 171.5 cm (48 x 67 1/2 in.)

Collection Simonyi

© Estate of Roy Lichtenstein



Cat. No. 116

Roy Lichtenstein

Two Nudes, 1995

oil and Magna on canvas

overall: 205.7 x 302.3 x 6.4 cm (81 x 119 x 2 1/2 in.)

Collection Simonyi

© Estate of Roy Lichtenstein

Cat. No. 117 / File Name: 3287-284.jpg

Roy Lichtenstein

Nudes with Beach Ball, 1994

oil and Magna on canvas

overall: 301 x 272.4 cm (118 1/2 x 107 1/4 in.)

Private collection

© Estate of Roy Lichtenstein



Cat. No. 118

Roy Lichtenstein

Woman: Sunlight, Moonlight, 1996

painted and patinated bronze

overall: 104.1 x 64.1 x 34.9 cm (41 x 25 1/4 x 13 3/4 in.)

Private collection

© Estate of Roy Lichtenstein

Cat. No. 119 / File Name: 3287-114.jpg

Roy Lichtenstein

Nude with Bust, 1995

oil and Magna on canvas

overall: 274.3 x 228.6 cm (108 x 90 x 2 1/2 in.)

Private collection

© Estate of Roy Lichtenstein



Cat. No. 120

Roy Lichtenstein

Interior with Nude Leaving, 1997

oil and Mineral Spirits Acrylic (MSA) on canvas

overall: 177.8 x 180.3 cm (70 x 71 in.)

Private collection

© Estate of Roy Lichtenstein

:

Cat. No. 121

Roy Lichtenstein

Yellow Cliffs, 1996

oil and Magna on canvas

overall: 276.2 x 123.8 cm (108 3/4 x 48 3/4 in.)

Suzanne Deal Booth and David G. Booth

© Estate of Roy Lichtenstein

Cat. No. 122

Roy Lichtenstein

Treetops through the Fog, 1996

oil and Magna on canvas

overall: 177.8 x 391.2 cm (70 x 154 in.)

Private collection

© Estate of Roy Lichtenstein

Cat. No. 123

Roy Lichtenstein

Scholar's Rock, 1996-1997

cast and painted stainless steel

overall: 71.2 x 43.5 x 22.2 cm (28 1/16 x 17 1/8 x 8 3/4 in.)

Private collection

© Estate of Roy Lichtenstein

Cat. No. 124

Roy Lichtenstein

Landscape with Philosopher, 1996

oil and Magna on canvas

overall: 264.2 x 121.3 cm (104 x 47 3/4 in.)

Private collection

© Estate of Roy Lichtenstein

Cat. No. 125

Roy Lichtenstein

Landscape with Boat, 1996

oil and Magna on canvas

overall: 149.2 x 244.5 cm (58 3/4 x 96 1/4 in.)

Private collection

© Estate of Roy Lichtenstein

Cat. No. 126 / File Name: 3287-117.jpg

Roy Lichtenstein

Landscape in Fog, 1996

oil and Magna on canvas

overall: 180.3 x 207.6 cm (71 x 81 3/4 in.)

Private collection

© Estate of Roy Lichtenstein



Cat. No. 133

Roy Lichtenstein

Crying Girl (Study), 1964

graphite and colored pencil on paper

overall: 14 x 14.6 cm (5 1/2 x 5 3/4 in.)

The Collection of Barbara Bluhm-Kaul & Don Kaul, Chicago

© Estate of Roy Lichtenstein

:

Cat. No. 134

Roy Lichtenstein

Ohhh...Alright...(Study), 1964

graphite and colored pencil on paper

overall: 14.9 x 14.9 cm (5 7/8 x 5 7/8 in.)

Private collection

© Estate of Roy Lichtenstein

Cat. No. 139 / File Name: 3287-210.jpg

Roy Lichtenstein

Alka Seltzer, 1966

graphite pencil, pochoir, and lithographic rubbing crayon on paper

overall: 76.2 x 55.9 cm (30 x 22 in.)

The Art Institute of Chicago, Margaret Fisher Endowment

© Estate of Roy Lichtenstein



Cat. No. 142

Roy Lichtenstein

Mirrors (Studies), 1970

graphite on paper

overall: 20.3 x 25.1 cm (7/8 x 9 7/8 in.)

The Art Institute of Chicago, Gift of Dorothy Lichtenstein

© Estate of Roy Lichtenstein

Cat. No. 143

Roy Lichtenstein

Mirror #3 (Six Panels) (Study), 1970

graphite and colored pencil on paper

overall: 39 x 40 cm (15 3/8 x 15 3/4 in.)

The Art Institute of Chicago, Margaret Fisher Endowment

© Estate of Roy Lichtenstein

Cat. No. 144

Roy Lichtenstein

Portrait Triptych (Study), 1974

two sheets, graphite and colored pencil on paper; one sheet, graphite, colored pencil, and cut-and-pasted paper on paper

Private collection

© Estate of Roy Lichtenstein

Cat. No. 147

Roy Lichtenstein

Abstraction (Studies), 1975

graphite and colored pencil on paper

overall: 29.5 x 22.9 cm (11 5/8 x 9 in.)

Private collection

© Estate of Roy Lichtenstein

Cat. No. 160

Roy Lichtenstein

Imperfect Paintings (Studies), 1987

graphite and colored pencil on graph paper

overall: 27.8 x 21.6 cm (10 15/16 x 8 1/2 in.)

Private collection

© Estate of Roy Lichtenstein

:

Cat. No. 170

Roy Lichtenstein

Interior with Painting of Reclining Nude (Study), 1997

Magna and cut-and-pasted printed and painted paper on board

overall: 101.9 x 153 cm (40 1/8 x 60 1/4 in.)

The Roy Lichtenstein Foundation Collection

© Estate of Roy Lichtenstein

Cat. No. 171 / File Name: 3287-221.jpg

Roy Lichtenstein

Still Life with Reclining Nude (Study), 1997

cut-and-pasted printed and painted paper on board

overall: 101.9 x 153 cm (40 1/8 x 60 1/4 in.)

The Roy Lichtenstein Foundation Collection

© Estate of Roy Lichtenstein

