

SUMMARY OF FUEL ECONOMY PERFORMANCE

(Public Version)

October 2012

revised: February 21, 2013

**U.S. DEPARTMENT OF TRANSPORTATION
NHTSA, NVS-220
1200 New Jersey Avenue, SE, West Bldg.
Washington, DC 20590**

**Refer questions or comments to
Mr. Terry Anderson, (202) 366-6030**

LEGEND

CAFE - Corporate Average Fuel Economy (sales volume weighted)

A - CAFE adjusted for test procedure changes

FLEETS

DP - Domestic Passenger Car

IP - Import Passenger Car

LT - Light Truck (GVWR is 8,500 lb or less)

IT - Captive Import Light Truck

A light truck which is not domestically manufactured but imported by a manufacturer whose principal place of business is in the United States (4x2 and 4x4 combined)

OT - Not a Captive Import Light Truck (4x2 and 4x4 combined)

SOURCES

1 - Based on Pre-Model Year Fuel Economy Report Data

2 - Based on Mid-Model Year Fuel Economy Report Data

3 - Based on Final EPA Data

NOTES

- This report contains estimated fleet production numbers and CAFE figures obtained from pre-model year (source 1) and mid-model year (source 2) documents assembled prior to or during the model year. The actual mpg values reported to EPA at the end of these model years may differ slightly from the data that manufacturers reported to NHTSA, which could affect the fleet average mpgs for these years.
- This report contains CAFE data for each model year 2003 - 2012. To obtain CAFE data for prior model years (1978 - 2002) contact Mr. Terry Anderson at (202) 366-6030.

CAFE STANDARDS

| MODEL YEAR | PASSENGER CARS | LIGHT TRUCKS | | |
|------------|----------------|--------------|------|------|
| | | COMBINED | 2WD | 4WD |
| 1978 | 18.0 | | | |
| 1979 | 19.0 | | 17.2 | 15.8 |
| 1980 | 20.0 | | 16.0 | 14.0 |
| 1981 | 22.0 | | 16.7 | 15.0 |
| 1982 | 24.0 | 17.5 | 18.0 | 16.0 |
| 1983 | 26.0 | 19.0 | 19.5 | 17.5 |
| 1984 | 27.0 | 20.0 | 20.3 | 18.5 |
| 1985 | 27.5 | 19.5 | 19.7 | 18.9 |
| 1986 | 26.0 | 20.0 | 20.5 | 19.5 |
| 1987 | 26.0 | 20.5 | 21.0 | 19.5 |
| 1988 | 26.0 | 20.5 | 21.0 | 19.5 |
| 1989 | 26.5 | 20.5 | 21.5 | 19.0 |
| 1990 | 27.5 | 20.0 | 20.5 | 19.0 |
| 1991 | 27.5 | 20.2 | 20.7 | 19.1 |
| 1992 | 27.5 | 20.2 | | |
| 1993 | 27.5 | 20.4 | | |
| 1994 | 27.5 | 20.5 | | |
| 1995 | 27.5 | 20.6 | | |
| 1996 | 27.5 | 20.7 | | |
| 1997 | 27.5 | 20.7 | | |
| 1998 | 27.5 | 20.7 | | |
| 1999 | 27.5 | 20.7 | | |
| 2000 | 27.5 | 20.7 | | |
| 2001 | 27.5 | 20.7 | | |
| 2002 | 27.5 | 20.7 | | |
| 2003 | 27.5 | 20.7 | | |
| 2004 | 27.5 | 20.7 | | |
| 2005 | 27.5 | 21.0 | | |
| 2006 | 27.5 | 21.6 | | |
| 2007 | 27.5 | 22.2 | | |
| 2008 | 27.5 | 22.5* | | |
| 2009 | 27.5 | 23.1* | | |
| 2010 | 27.5 | 23.5* | | |
| 2011** | 30.2 | 24.3 | | |
| 2012*** | 32.7 | 25.2 | | |

* - The values shown are the standard values applicable under the existing "unreformed" CAFE program. In model years 2008-2010, light truck manufacturers have the option to comply with the unreformed standard values or the new reformed standard values based upon each manufacturers unique vehicle fleet characteristics.

** - Projected 2011 required average fuel economy standard value based on MMY reports.

*** - Projected 2012 required average fuel economy standard value based on MMY reports.

SUMMARY

CAFE

| MODEL YEAR | TOTAL FLEET | PASSENGER CARS | DOMESTIC | IMPORT | LIGHT TRUCKS | OTHER | CAPTIVE IMPORT |
|------------|-------------|----------------|----------|--------|--------------|-------|----------------|
| 1978 | 19.9 | 19.9 | 18.7 | 27.3 | | | |
| 1979 | 20.1 | 20.3 | 19.3 | 26.1 | 18.2 | 18.2 | |
| 1980 | 23.1 | 24.3 | 22.6 | 29.6 | 18.5 | 17.8 | 25.7 |
| 1981 | 24.6 | 25.9 | 24.2 | 31.5 | 20.1 | 19.6 | 26.7 |
| 1982 | 25.1 | 26.6 | 25.0 | 31.1 | 20.5 | 20.3 | 26.7 |
| 1983 | 24.8 | 26.4 | 24.4 | 32.4 | 20.7 | 20.6 | 28.4 |
| 1984 | 25.0 | 26.9 | 25.5 | 32.0 | 20.6 | 20.6 | 27.2 |
| 1985 | 25.4 | 27.6 | 26.3 | 31.5 | 20.7 | 20.6 | 27.1 |
| 1986 | 25.9 | 28.2 | 26.9 | 31.6 | 21.5 | 21.4 | 23.3 |
| 1987 | 26.2 | 28.5 | 27.0 | 31.2 | 21.7 | 21.7 | 22.3 |
| 1988 | 26.0 | 28.8 | 27.4 | 31.5 | 21.3 | 21.2 | 22.4 |
| 1989 | 25.6 | 28.4 | 27.2 | 30.8 | 21.0 | 20.9 | 21.8 |
| 1990 | 25.4 | 28.0 | 26.9 | 29.9 | 20.8 | 20.8 | 17.6 |
| 1991 | 25.6 | 28.4 | 27.3 | 30.1 | 21.3 | 21.3 | 20.4 |
| 1992 | 25.1 | 27.9 | 27.0 | 29.2 | 20.8 | 20.8 | 21.0 |
| 1993 | 25.2 | 28.4 | 27.8 | 29.6 | 21.0 | 21.0 | 24.3 |
| 1994 | 24.7 | 28.3 | 27.5 | 29.6 | 20.8 | 20.8 | 0.0 |
| 1995 | 24.9 | 28.6 | 27.7 | 30.3 | 20.5 | 20.5 | 0.0 |
| 1996 | 24.9 | 28.5 | 28.1 | 29.6 | 20.8 | | |
| 1997 | 24.6 | 28.7 | 27.8 | 30.1 | 20.6 | | |
| 1998 | 24.7 | 28.8 | 28.6 | 29.2 | 21.0 | | |
| 1999 | 24.5 | 28.3 | 28.0 | 29.0 | 20.9 | | |
| 2000 | 24.8 | 28.5 | 28.7 | 28.3 | 21.3 | | |
| 2001 | 24.5 | 28.8 | 28.7 | 29.0 | 20.9 | | |
| 2002 | 24.7 | 29.0 | 29.1 | 28.8 | 21.4 | | |
| 2003 | 25.1 | 29.5 | 29.1 | 29.9 | 21.8 | | |
| 2004 | 24.6 | 29.5 | 29.9 | 28.7 | 21.5 | | |
| 2005 | 25.4 | 30.3 | 30.5 | 29.9 | 22.1 | | |
| 2006 | 25.8 | 30.1 | 30.3 | 29.7 | 22.5 | | |
| 2007 | 26.6 | 31.2 | 30.6 | 32.2 | 23.1 | | |
| 2008 | 27.1 | 31.5 | 31.2 | 31.8 | 23.6 | | |
| 2009 | 29.0 | 32.9 | 32.1 | 33.8 | 24.8 | | |
| 2010 | 29.3 | 33.9 | 33.1 | 35.2 | 25.2 | | |
| 2011 | 29.0 | 33.3 | 32.5 | 34.4 | 24.6 | | |
| 2012 | 30.8 | 35.2 | 34.5 | 36.4 | 25.0 | | |

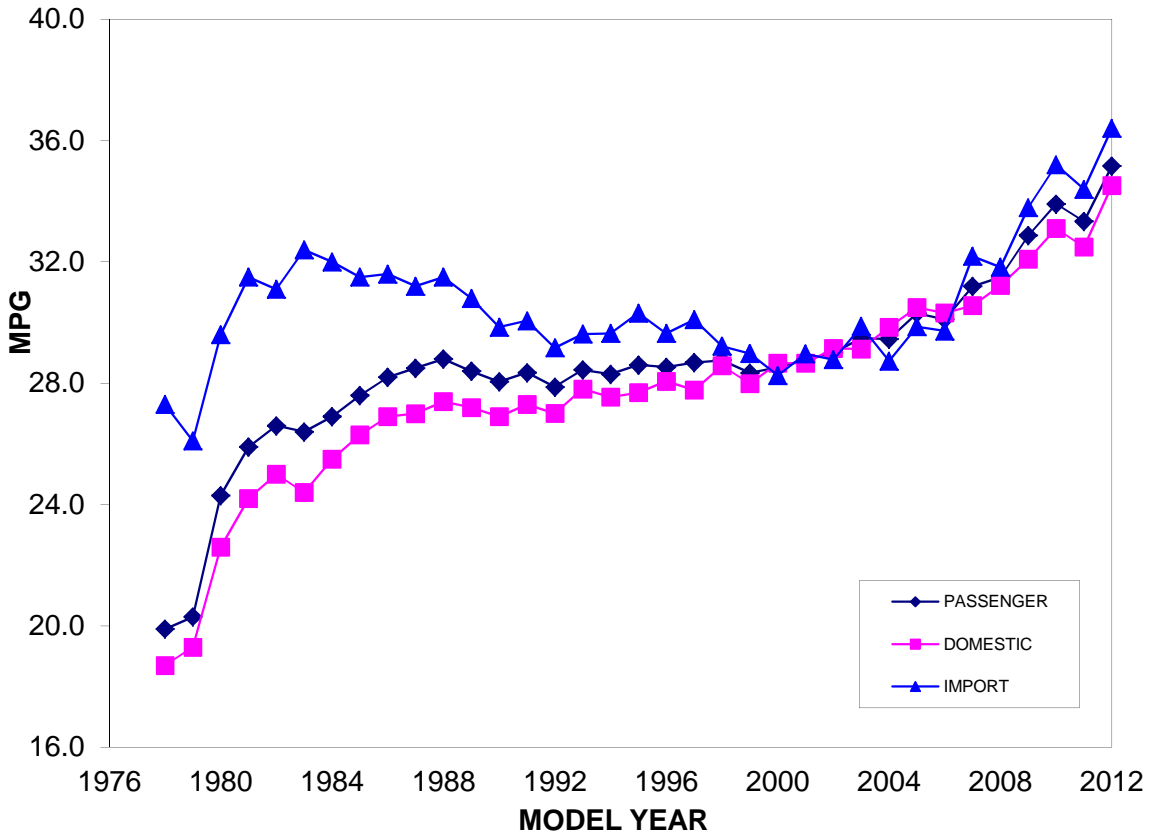
SALES VOLUME

| MODEL YEAR | TOTAL FLEET | PASSENGER CARS | DOMESTIC | IMPORT | LIGHT TRUCKS | OTHER | CAPTIVE IMPORT |
|------------|-------------|----------------|-----------|-----------|--------------|-----------|----------------|
| 1978 | 11,182,347 | 11,182,347 | 9,117,833 | 2,064,514 | | | |
| 1979 | 11,912,298 | 10,747,622 | 8,683,544 | 2,064,078 | 1,164,676 | 1,164,676 | |
| 1980 | 11,274,924 | 9,389,820 | 6,687,791 | 2,702,029 | 1,885,104 | 1,656,070 | 229,034 |
| 1981 | 10,537,143 | 8,687,154 | 6,217,601 | 2,469,553 | 1,849,989 | 1,676,984 | 173,005 |
| 1982 | 9,700,362 | 7,752,124 | 5,442,276 | 2,309,848 | 1,948,238 | 1,879,882 | 68,356 |
| 1983 | 10,275,599 | 7,966,753 | 5,562,787 | 2,403,966 | 2,308,846 | 2,284,370 | 24,476 |
| 1984 | 14,114,857 | 10,669,856 | 7,896,517 | 2,773,339 | 3,445,001 | 3,397,193 | 47,808 |
| 1985 | 14,574,365 | 10,795,693 | 7,735,957 | 3,059,736 | 3,778,672 | 3,716,846 | 61,826 |
| 1986 | 15,439,944 | 11,016,850 | 7,426,980 | 3,589,870 | 4,423,094 | 4,309,308 | 113,786 |
| 1987 | 14,837,586 | 10,671,148 | 6,569,407 | 4,101,741 | 4,166,438 | 4,028,995 | 137,443 |
| 1988 | 15,299,064 | 10,694,680 | 6,569,200 | 4,125,480 | 4,604,384 | 4,508,937 | 95,447 |
| 1989 | 14,453,323 | 10,004,974 | 6,216,306 | 3,788,668 | 4,448,349 | 4,361,371 | 86,978 |
| 1990 | 12,616,572 | 8,814,629 | 5,113,107 | 3,701,522 | 3,801,943 | 3,781,762 | 20,181 |
| 1991 | 12,587,853 | 8,529,947 | 5,093,338 | 3,436,609 | 4,057,906 | 4,044,344 | 13,542 |
| 1992 | 12,190,563 | 8,142,792 | 4,715,619 | 3,427,173 | 4,047,771 | 4,039,709 | 8,051 |
| 1993 | 13,239,451 | 8,479,737 | 5,404,779 | 3,074,958 | 4,759,714 | 4,758,958 | 925 |
| 1994 | 13,987,636 | 8,422,592 | 5,257,594 | 3,164,998 | 5,565,044 | 5,565,044 | 0 |
| 1995 | 15,144,646 | 9,433,700 | 5,952,566 | 3,481,134 | 5,710,946 | 5,710,946 | 0 |
| 1996 | 13,144,417 | 7,920,216 | 5,488,818 | 2,431,398 | 5,224,201 | | |
| 1997 | 14,481,944 | 8,383,896 | 4,935,875 | 3,448,021 | 6,098,048 | | |
| 1998 | 14,484,512 | 8,031,441 | 5,720,154 | 2,311,287 | 6,453,071 | | |
| 1999 | 15,234,568 | 8,516,952 | 5,417,444 | 3,099,508 | 6,717,616 | | |
| 2000 | 16,579,778 | 9,246,899 | 6,218,666 | 3,028,233 | 7,332,879 | | |
| 2001 | 15,661,962 | 8,347,254 | 5,171,182 | 3,176,072 | 7,314,708 | | |
| 2002 | 16,181,025 | 8,236,180 | 5,232,276 | 3,003,904 | 7,944,845 | | |
| 2003 | 15,715,877 | 7,893,894 | 4,128,996 | 3,764,898 | 7,821,983 | | |
| 2004 | 15,713,668 | 7,367,246 | 4,860,062 | 2,507,184 | 8,346,422 | | |
| 2005 | 15,932,920 | 7,685,212 | 5,393,449 | 2,291,763 | 8,247,708 | | |
| 2006 | 15,107,689 | 7,582,640 | 4,899,946 | 2,682,694 | 7,525,049 | | |
| 2007 | 15,371,542 | 7,872,222 | 4,711,788 | 3,160,434 | 7,499,320 | | |
| 2008 | 13,841,092 | 7,038,652 | 3,878,338 | 3,160,314 | 6,802,440 | | |
| 2009 | 9,353,215 | 5,513,420 | 2,917,813 | 2,595,607 | 3,839,795 | | |
| 2010 | 11,123,563 | 6,005,596 | 3,609,055 | 2,396,541 | 5,117,967 | | |
| 2011 | 11,792,852 | 6,848,948 | 3,714,917 | 3,134,031 | 4,943,904 | | |

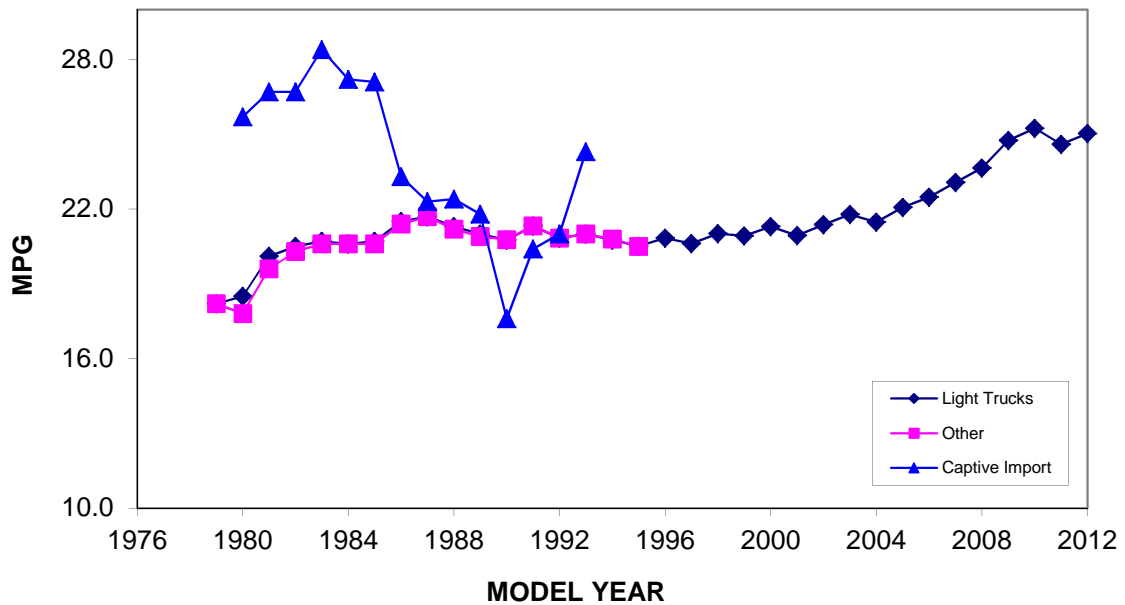
After MY 1995, the Light Truck Fleet is no longer broken down into "Captive Import" and "Other" categories.

After MY 2010, final EPA data is not fully available

PASSENGER CAR CAFE

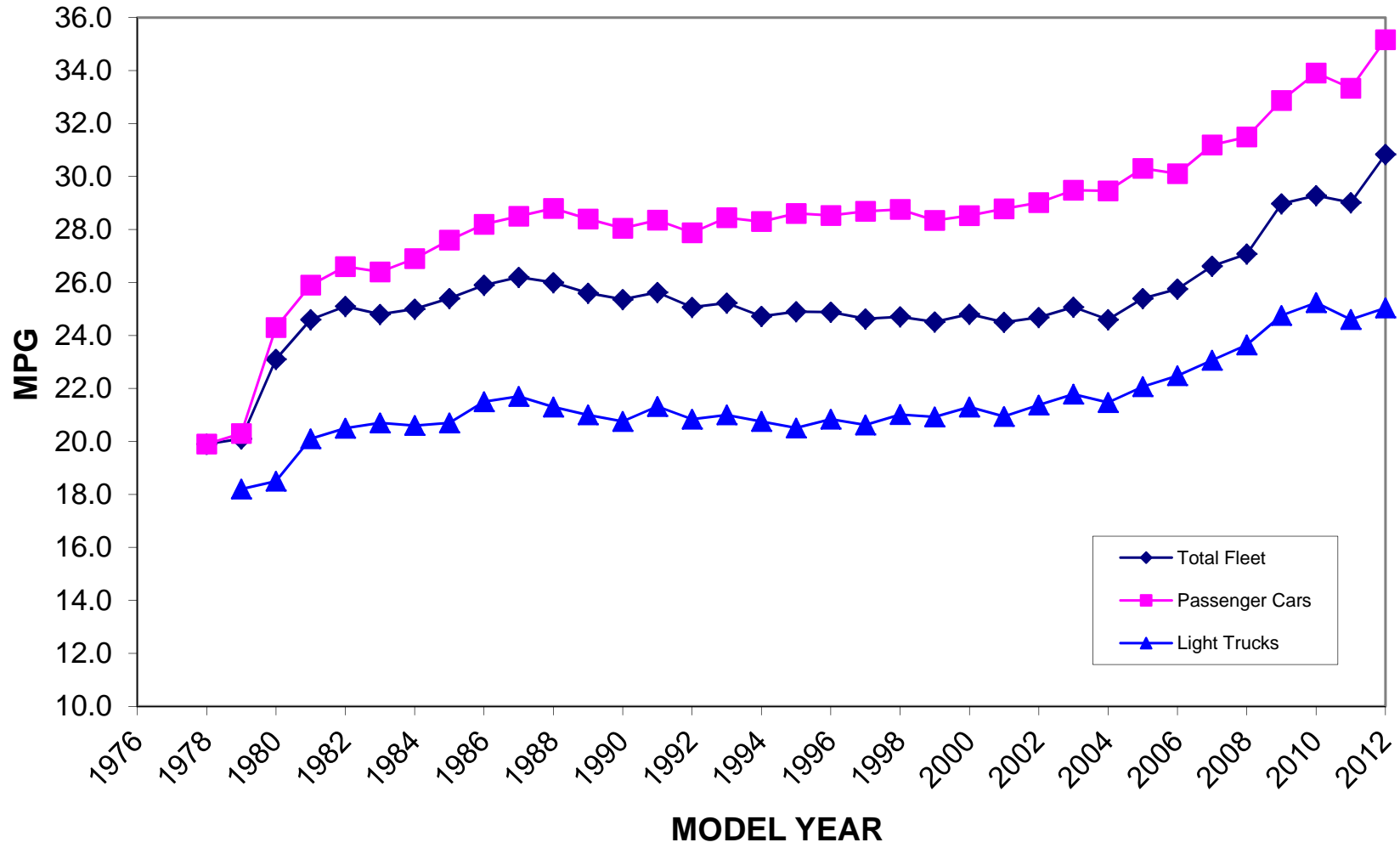


LIGHT TRUCK CAFE



The light truck fleet is not broken down by "Captive Import" and "Other" categories after MY 95

FLEET CAFE



MODEL YEAR 2012

| <u>MANUFACTURER</u> | <u>YEAR</u> | <u>FLEET</u> | <u>STD</u> | <u>CAFE</u> | <u>ADJ</u> | <u>SOURCE</u> |
|---------------------|-------------|--------------|------------|-------------|------------|---------------|
| BMW | 2012 | IP | 32.6 | 32.6 | A | 2 |
| BMW | 2012 | LT | 26.2 | 25.3 | | 2 |
| CHRYSLER | 2012 | DP | 31.7 | 30.6 | A | 2 |
| CHRYSLER | 2012 | LT | 25.4 | 24.3 | | 2 |
| DAIMLER | 2012 | IP | 32.3 | 28.3 | | 2 |
| DAIMLER | 2012 | LT | 26.0 | 22.7 | | 2 |
| FIAT | (1) 2012 | IP | 31.1 | 18.9 | | 2 |
| FISKER | 2012 | DP | 28.0 | 47.3 | | 2 |
| FORD | 2012 | IP | 31.7 | 31.0 | A | 2 |
| FORD | 2012 | DP | 33.3 | 34.9 | A | 2 |
| FORD | 2012 | LT | 24.2 | 24.4 | | 2 |
| GM | 2012 | DP | 32.3 | 32.9 | A | 2 |
| GM | 2012 | LT | 23.8 | 23.5 | | 2 |
| HONDA | 2012 | DP | 30.6 | 37.6 | A | 2 |
| HONDA | 2012 | IP | 31.0 | 40.6 | A | 2 |
| HONDA | 2012 | LT | 25.3 | 27.9 | | 2 |
| HYUNDAI | 2012 | IP | 32.6 | 38.7 | | 2 |
| HYUNDAI | 2012 | LT | 27.8 | 29.0 | | 2 |
| JAGUAR LAND ROVER | 2012 | IP | 30.2 | 23.7 | A | 2 |
| JAGUAR LAND ROVER | 2012 | LT | 27.1 | 20.2 | | 2 |
| KIA | 2012 | IP | 33.1 | 36.2 | | 2 |
| KIA | 2012 | LT | 26.0 | 28.0 | | 2 |
| LOTUS | 2012 | IP | 34.3 | 27.3 | A | 2 |
| MAZDA | 2012 | IP | 33.9 | 36.9 | A | 2 |
| MAZDA | 2012 | LT | 27.2 | 27.6 | | 2 |
| MITSUBISHI | 2012 | IP | 34.0 | 36.1 | A | 2 |
| MITSUBISHI | 2012 | LT | 28.7 | 31.4 | | 2 |
| NISSAN | 2012 | DP | 33.3 | 35.1 | A | 2 |
| NISSAN | 2012 | IP | 34.0 | 35.2 | A | 2 |
| NISSAN | 2012 | LT | 26.0 | 24.7 | | 2 |
| PORSCHE | 2012 | IP | 33.0 | 27.9 | A | 2 |
| PORSCHE | 2012 | LT | 26.0 | 24.6 | | 2 |
| SUBARU | 2012 | DP | 32.6 | 32.0 | A | 2 |
| SUBARU | 2012 | IP | 34.6 | 36.9 | A | 2 |
| SUBARU | 2012 | LT | 28.4 | 30.5 | | 2 |
| SUZUKI | 2012 | IP | 34.9 | 33.6 | A | 2 |
| SUZUKI | 2012 | LT | 27.3 | 25.0 | | 2 |
| TESLA | 2012 | DP | 111.6 | 111.6 | | 2 |
| TOYOTA | 2012 | DP | 33.0 | 36.4 | | 2 |
| TOYOTA | 2012 | IP | 33.9 | 46.9 | | 2 |
| TOYOTA | 2012 | LT | 25.9 | 25.6 | | 2 |
| VOLVO | 2012 | IP | 32.3 | 29.6 | | 2 |
| VOLVO | 2012 | LT | 27.0 | 25.3 | | 2 |
| VPG | 2012 | LT | 24.3 | 27.1 | | 2 |
| VW | 2012 | DP | 32.2 | 33.6 | | 2 |
| VW | 2012 | IP | 33.6 | 32.9 | | 2 |
| VW | 2012 | LT | 26.8 | 27.4 | | 2 |

* - 2012 STD = Required fleet standard based upon manufacturer's fleet characteristics

(1) - includes Ferrari and Maserati vehicles

MODEL YEAR 2011

| <u>MANUFACTURER</u> | <u>YEAR</u> | <u>FLEET</u> | <u>STD</u> | <u>CAFE</u> | <u>ADJ</u> | <u>VOLUME</u> | <u>SOURCE</u> |
|---------------------|-------------|--------------|------------|-------------|------------|---------------|---------------|
| BMW | 2011 | IP | 29.5 | 29.7 | A | 297,770 | 2 |
| BMW | 2011 | LT | 25.4 | 25.5 | | 59,290 | 2 |
| CHRYSLER | 2011 | DP | 28.6 | 29.9 | A | 237,776 | 2 |
| CHRYSLER | 2011 | LT | 24.7 | 24.3 | | 846,202 | 2 |
| DAIMLER | 2011 | IP | 29.9 | 27.0 | | 178,065 | 2 |
| DAIMLER | 2011 | LT | 25.3 | 21.5 | | 70,056 | 2 |
| FIAT | (1) 2011 | IP | 28.6 | 18.4 | | 2,700 | 2 |
| FORD | 2011 | DP | 29.7 | 32.4 | A | 829,957 | 2 |
| FORD | 2011 | LT | 23.5 | 24.2 | | 831,846 | 2 |
| GM | 2011 | DP | 29.9 | 31.7 | A | 1,238,428 | 2 |
| GM | 2011 | IP | 30.8 | 32.9 | A | 92,404 | 2 |
| GM | 2011 | LT | 22.7 | 23.1 | | 1,089,179 | 2 |
| HONDA | 2011 | DP | 30.5 | 34.9 | A | 437,065 | 2 |
| HONDA | 2011 | IP | 31.1 | 42.8 | A | 86,021 | 2 |
| HONDA | 2011 | LT | 25.4 | 26.2 | | 486,255 | 2 |
| HYUNDAI | 2011 | IP | 30.1 | 35.7 | | 536,369 | 2 |
| HYUNDAI | 2011 | LT | 26.4 | 28.6 | | 46,472 | 2 |
| JAGUAR LAND ROVER | 2011 | IP | 27.2 | 23.6 | A | 18,373 | 2 |
| JAGUAR LAND ROVER | 2011 | LT | 26.0 | 18.5 | | 40,391 | 2 |
| KIA | 2011 | IP | 30.6 | 34.6 | | 343,150 | 2 |
| KIA | 2011 | LT | 26.0 | 28.8 | | 85,498 | 2 |
| LOTUS | 2011 | IP | 31.1 | 27.4 | A | 651 | 2 |
| MAZDA | 2011 | DP | 31.1 | 31.7 | A | 2,218 | 2 |
| MAZDA | 2011 | IP | 30.7 | 33.4 | A | 153,923 | 2 |
| MAZDA | 2011 | LT | 25.7 | 24.9 | | 35,936 | 2 |
| MINI | 2011 | IP | 30.9 | 33.2 | A | 74,280 | 2 |
| MINI | 2011 | LT | 26.6 | 29.9 | | 17,285 | 2 |
| NISSAN | 2011 | DP | 30.6 | 34.6 | A | 340,309 | 2 |
| NISSAN | 2011 | IP | 30.7 | 33.4 | A | 327,542 | 2 |
| NISSAN | 2011 | LT | 25.1 | 24.8 | | 302,394 | 2 |
| PORSCHE | 2011 | IP | 28.8 | 26.6 | A | 17,138 | 2 |
| PORSCHE | 2011 | LT | 25.3 | 24.0 | | 13,217 | 2 |
| SAAB | 2011 | IP | 31.0 | 29.3 | | 6,337 | 2 |
| SPYKER | 2011 | IP | 31.2 | 17.0 | | 4 | 2 |
| SUBARU | 2011 | IP | 30.8 | 30.6 | A | 79,957 | 2 |
| SUBARU | 2011 | LT | 26.6 | 30.5 | | 149,836 | 2 |
| SUZUKI | 2011 | IP | 31.1 | 34.1 | A | 19,390 | 2 |
| SUZUKI | 2011 | LT | 26.0 | 25.7 | | 7,860 | 2 |
| TESLA | 2011 | DP | 31.2 | 346.8 | | 276 | 2 |
| THINK | 2011 | DP | 31.2 | 130.6 | | 200 | 2 |
| TOYOTA | 2011 | DP | 30.3 | 32.6 | | 628,512 | 2 |
| TOYOTA | 2011 | IP | 30.9 | 42.6 | | 618,514 | 2 |
| TOYOTA | 2011 | LT | 24.7 | 25.5 | | 773,112 | 2 |
| VOLVO | 2011 | IP | 30.6 | 28.8 | | 31,070 | 2 |
| VOLVO | 2011 | LT | 26.0 | 24.2 | | 23,169 | 2 |
| VPG | 2011 | LT | 23.0 | 28.1 | | 335 | 2 |
| WHEEGO | 2011 | DP | 31.2 | 106.6 | | 176 | 2 |
| VW | 2011 | IP | 30.7 | 33.4 | A | 250,373 | 2 |
| VW | 2011 | LT | 25.9 | 27.2 | | 65,571 | 2 |

* - 2011 STD = Required fleet standard based upon manufacturer's fleet characteristics

(1) - Fiat includes combined data for Ferrari and Maserati.

MODEL YEAR 2010

| <u>MANUFACTURER</u> | | <u>YEAR</u> | <u>FLEET</u> | <u>STD</u> | <u>CAFE</u> | <u>ADJ</u> | <u>VOLUME</u> | <u>SOURCE</u> |
|---------------------|-----|-------------|--------------|------------|-------------|------------|---------------|---------------|
| ASTON MARTIN | (1) | 2010 | IP | 19.2 | 19.2 | | 601 | 3 |
| BMW | | 2010 | IP | 27.5 | 28.8 | | 143,637 | 3 |
| BMW | | 2010 | LT | 23.5 | 23.6 | | 26,788 | 3 |
| CHRYSLER | | 2010 | DP | 27.5 | 28.3 | | 359,533 | 3 |
| CHRYSLER | | 2010 | LT | 23.5 | 24.3 | | 800,239 | 3 |
| DAIMLER | | 2010 | LT | 23.5 | 21.4 | | 72,393 | 3 |
| DAIMLER | | 2010 | IP | 27.5 | 26.1 | | 153,745 | 3 |
| FIAT | (2) | 2010 | IP | 27.5 | 18.4 | | 3,163 | 3 |
| FORD | | 2010 | DP | 27.5 | 32.6 | | 713,248 | 3 |
| FORD | (3) | 2010 | LT | 23.4 | 24.1 | | 1,083,474 | 3 |
| GM | | 2010 | DP | 27.5 | 30.8 | | 755,666 | 3 |
| GM | (3) | 2010 | LT | 23.0 | 25.5 | | 933,798 | 3 |
| GM | | 2010 | IP | 27.5 | 34.7 | | 37,426 | 3 |
| HONDA | | 2010 | DP | 27.5 | 34.8 | | 570,695 | 3 |
| HONDA | | 2010 | IP | 27.5 | 40.9 | | 171,581 | 3 |
| HONDA | | 2010 | LT | 23.5 | 26.8 | | 493,070 | 3 |
| HYUNDAI | | 2010 | IP | 27.5 | 36.3 | | 313,984 | 3 |
| HYUNDAI | | 2010 | LT | 23.5 | 30.0 | | 86,717 | 3 |
| JAGUAR LAND ROVER | | 2010 | IP | 27.5 | 23.7 | | 10,472 | 3 |
| JAGUAR LAND ROVER | | 2010 | LT | 23.5 | 18.7 | | 29,724 | 3 |
| KIA | | 2010 | IP | 27.5 | 36.6 | | 219,680 | 3 |
| KIA | | 2010 | LT | 23.5 | 25.7 | | 28,198 | 3 |
| LOTUS | | 2010 | IP | 27.5 | 26.9 | | 354 | 3 |
| MAZDA | | 2010 | IP | 27.5 | 33.8 | | 212,495 | 3 |
| MAZDA | | 2010 | LT | 23.5 | 26.7 | | 98,444 | 3 |
| MINI | | 2010 | LT | 23.5 | 27.3 | | 20,610 | 3 |
| MITSUBISHI | | 2010 | IP | 27.5 | 32.0 | | 42,798 | 3 |
| NISSAN | | 2010 | IP | 27.5 | 32.5 | | 172,950 | 3 |
| NISSAN | | 2010 | DP | 27.5 | 34.7 | | 377,820 | 3 |
| NISSAN | | 2010 | LT | 23.5 | 24.9 | | 303,366 | 3 |
| PORSCHE | | 2010 | IP | 27.5 | 25.7 | | 11,937 | 3 |
| PORSCHE | | 2010 | LT | 23.5 | 20.5 | | 3,978 | 3 |
| SPYKER | (1) | 2010 | IP | 20.7 | 20.7 | | 5 | 3 |
| SUBARU | | 2010 | DP | 27.5 | 32.3 | | 34,726 | 3 |
| SUBARU | | 2010 | IP | 27.5 | 28.9 | | 38,000 | 3 |
| SUBARU | | 2010 | LT | 23.5 | 29.6 | | 185,526 | 3 |
| SUZUKI | | 2010 | IP | 27.5 | 34.6 | | 20,212 | 3 |
| SUZUKI | | 2010 | LT | 23.5 | 26.3 | | 8,728 | 3 |
| TESLA | (4) | 2010 | DP | 27.5 | 346.8 | | 278 | 3 |
| TOYOTA | | 2010 | DP | 27.5 | 37.0 | | 797,089 | 3 |
| TOYOTA | | 2010 | IP | 27.5 | 44.6 | | 545,634 | 3 |
| TOYOTA | | 2010 | LT | 23.5 | 26.1 | | 862,467 | 3 |
| VOLVO | | 2010 | IP | 27.5 | 27.9 | | 23,529 | 3 |
| VOLVO | | 2010 | LT | 23.5 | 23.1 | | 34,413 | 3 |
| VW | | 2010 | IP | 27.5 | 33.3 | | 274,338 | 3 |
| VW | | 2010 | LT | 23.5 | 25.2 | | 46,034 | 3 |

- (1) - Manufacturer's petition for an alternate standard is pending.
(2) - Fiat includes combined data for Ferrari and Maserati.
(3) - Manufacturer opted for the reformed light truck standard.
(4) - EPA did not test vehicles of manufacturers who produced only electric vehicles. CAFE and volume values shown are final values submitted to EPA.

MODEL YEAR 2009

| <u>MANUFACTURER</u> | | <u>YEAR</u> | <u>FLEET</u> | <u>STD</u> | <u>CAFE</u> | <u>ADJ</u> | <u>VOLUME</u> | <u>SOURCE</u> |
|---------------------|-----|-------------|--------------|------------|-------------|------------|---------------|---------------|
| ASTON MARTIN | (1) | 2009 | IP | 18.6 | 18.6 | | 1,323 | 3 |
| BMW | | 2009 | IP | 27.5 | 29.0 | | 186,819 | 3 |
| BMW | | 2009 | LT | 23.1 | 22.7 | | 33,767 | 3 |
| CHRYSLER | | 2009 | DP | 27.5 | 28.1 | | 219,880 | 3 |
| CHRYSLER | | 2009 | LT | 23.1 | 23.9 | | 595,770 | 3 |
| DAIMLER | | 2009 | LT | 23.1 | 20.8 | | 43,747 | 3 |
| DAIMLER | | 2009 | IP | 27.5 | 27.1 | | 133,454 | 3 |
| FIAT | (2) | 2009 | IP | 27.5 | 17.8 | | 2,756 | 3 |
| FORD | | 2009 | DP | 27.5 | 31.5 | | 421,198 | 3 |
| FORD | | 2009 | LT | 23.1 | 24.6 | | 584,509 | 3 |
| FORD | | 2009 | IP | 27.5 | 27.6 | | 31,618 | 3 |
| GM | | 2009 | DP | 27.5 | 31.3 | | 865,064 | 3 |
| GM | (3) | 2009 | LT | 22.5 | 23.6 | | 921,464 | 3 |
| GM | | 2009 | IP | 27.5 | 30.3 | | 96,408 | 3 |
| HONDA | | 2009 | DP | 27.5 | 34.3 | | 608,190 | 3 |
| HONDA | | 2009 | IP | 27.5 | 39.0 | | 143,229 | 3 |
| HONDA | | 2009 | LT | 23.1 | 26.1 | | 397,621 | 3 |
| HYUNDAI | | 2009 | IP | 27.5 | 34.1 | | 320,687 | 3 |
| HYUNDAI | | 2009 | LT | 23.1 | 25.9 | | 91,077 | 3 |
| JAGUAR LAND ROVER | | 2009 | IP | 27.5 | 23.7 | | 15,247 | 3 |
| JAGUAR LAND ROVER | | 2009 | LT | 23.1 | 19.1 | | 14,795 | 3 |
| KIA | | 2009 | IP | 27.5 | 35.2 | | 155,446 | 3 |
| KIA | | 2009 | LT | 23.1 | 25.0 | | 81,725 | 3 |
| LOTUS | | 2009 | IP | 27.5 | 30.1 | | 147 | 3 |
| MAZDA | | 2009 | IP | 27.5 | 32.6 | | 54,862 | 3 |
| MAZDA | | 2009 | DP | 27.5 | 30.4 | | 39,504 | 3 |
| MAZDA | | 2009 | LT | 23.1 | 26.6 | | 54,508 | 3 |
| MINI | | 2009 | IP | 27.5 | 27.4 | | 11,954 | 3 |
| MITSUBISHI | | 2009 | IP | 27.5 | 30.4 | | 81,131 | 3 |
| NISSAN | | 2009 | IP | 27.5 | 33.3 | | 216,231 | 3 |
| NISSAN | | 2009 | DP | 27.5 | 33.9 | | 341,113 | 3 |
| NISSAN | | 2009 | LT | 23.1 | 25.7 | | 282,978 | 3 |
| PORSCHE | | 2009 | IP | 27.5 | 27.6 | | 10,980 | 3 |
| PORSCHE | | 2009 | LT | 23.1 | 20.1 | | 9,013 | 3 |
| SPYKER | (4) | 2009 | IP | 19.6 | 19.6 | | 18 | 3 |
| SUBARU | | 2009 | IP | 27.5 | 29.2 | | 68,829 | 3 |
| SUBARU | | 2009 | LT | 23.1 | 28.5 | | 131,987 | 3 |
| SUZUKI | | 2009 | IP | 27.5 | 32.7 | | 24,859 | 3 |
| SUZUKI | | 2009 | LT | 23.1 | 25.6 | | 10,146 | 3 |
| TESLA | (5) | 2009 | DP | 27.5 | 244.0 | | 900 | 3 |
| TOYOTA | | 2009 | DP | 27.5 | 32.5 | | 421,964 | 3 |
| TOYOTA | | 2009 | IP | 27.5 | 39.4 | | 797,167 | 3 |
| TOYOTA | | 2009 | LT | 23.1 | 26.2 | | 536,843 | 3 |
| VW | | 2009 | IP | 27.5 | 31.2 | | 254,396 | 3 |
| VW | | 2009 | LT | 23.1 | 24.5 | | 37,891 | 3 |

- (1) - Aston Martin's petition for an alternate standard is pending.
- (2) - Fiat includes combined data for Alfa Romeo, Ferrari and Maserati
- (3) - Manufacturer opted for the reformed light truck standard.
- (4) - Spyker's petition for an alternate standard is pending.
- (5) - EPA did not test vehicles of manufacturers who produced only electric vehicles. CAFE and volume values shown are final values submitted to EPA.

MODEL YEAR 2008

| <u>MANUFACTURER</u> | | <u>YEAR</u> | <u>FLEET</u> | <u>STD</u> | <u>CAFE</u> | <u>ADJ</u> | <u>VOLUME</u> | <u>SOURCE</u> |
|---------------------|-----|-------------|--------------|------------|-------------|------------|---------------|---------------|
| ASTON MARTIN | (1) | 2008 | IP | 19.0 | 19.0 | | 1,370 | 3 |
| BMW | | 2008 | IP | 27.5 | 27.4 | | 291,796 | 3 |
| BMW | | 2008 | LT | 22.5 | 22.9 | | 61,324 | 3 |
| CHRYSLER | | 2008 | DP | 27.5 | 29.3 | | 522,670 | 3 |
| CHRYSLER | | 2008 | LT | 22.5 | 23.6 | | 1,132,886 | 3 |
| CHRYSLER | | 2008 | IP | 27.5 | 26.5 | | 1,648 | 3 |
| DAIMLER | (2) | 2008 | LT | 22.3 | 20.8 | | 79,135 | 3 |
| DAIMLER | | 2008 | IP | 27.5 | 26.9 | | 208,195 | 3 |
| FERRARI | | 2008 | IP | 27.5 | 16.4 | | 1,450 | 3 |
| FIAT (ALFA ROMEO) | | 2008 | IP | 27.5 | 17.8 | | 84 | 3 |
| FORD | | 2008 | DP | 27.5 | 30.1 | | 699,957 | 3 |
| FORD | | 2008 | LT | 22.5 | 23.6 | | 1,266,265 | 3 |
| FORD | | 2008 | IP | 27.5 | 31.1 | | 202,811 | 3 |
| GM | | 2008 | DP | 27.5 | 29.6 | | 1,264,194 | 3 |
| GM | (2) | 2008 | LT | 22.0 | 23.2 | | 1,744,266 | 3 |
| GM | | 2008 | IP | 27.5 | 31.5 | | 107,717 | 3 |
| HONDA | | 2008 | DP | 27.5 | 36.0 | | 428,859 | 3 |
| HONDA | | 2008 | IP | 27.5 | 33.5 | | 471,781 | 3 |
| HONDA | | 2008 | LT | 22.5 | 25.5 | | 612,281 | 3 |
| HYUNDAI | | 2008 | IP | 27.5 | 34.2 | | 270,293 | 3 |
| HYUNDAI | | 2008 | LT | 22.5 | 25.6 | | 112,517 | 3 |
| JAGUAR LAND ROVER | | 2008 | LT | 22.5 | 19.3 | | 55,584 | 3 |
| JAGUAR LAND ROVER | | 2008 | IP | 27.5 | 24.8 | | 9,596 | 3 |
| KIA | | 2008 | IP | 27.5 | 33.6 | | 169,304 | 3 |
| KIA | | 2008 | LT | 22.5 | 24.2 | | 120,365 | 3 |
| LOTUS | | 2008 | IP | 27.5 | 29.9 | | 252 | 3 |
| MASERATI | | 2008 | IP | 27.5 | 18.6 | | 2,661 | 3 |
| MINI | | 2008 | LT | 22.5 | 24.7 | | 24,028 | 3 |
| MINI | | 2008 | IP | 27.5 | 30.0 | | 76,700 | 3 |
| NISSAN | | 2008 | IP | 27.5 | 29.2 | | 213,713 | 3 |
| NISSAN | | 2008 | DP | 27.5 | 33.9 | | 454,610 | 3 |
| NISSAN | | 2008 | LT | 22.5 | 23.1 | | 355,092 | 3 |
| PORSCHE | | 2008 | IP | 27.5 | 26.4 | | 18,909 | 3 |
| PORSCHE | | 2008 | LT | 22.5 | 20.0 | | 18,797 | 3 |
| SPYKER | (1) | 2008 | IP | 19.6 | 19.6 | | 6 | 3 |
| SUBARU | | 2008 | DP | 27.5 | 29.0 | | 26,288 | 3 |
| SUBARU | | 2008 | IP | 27.5 | 28.9 | | 89,746 | 3 |
| SUBARU | | 2008 | LT | 22.5 | 27.3 | | 82,546 | 3 |
| SUZUKI | | 2008 | IP | 27.5 | 31.6 | | 68,720 | 3 |
| SUZUKI | | 2008 | LT | 22.5 | 23.7 | | 42,551 | 3 |
| TESLA | (3) | 2008 | DP | 27.5 | 244.0 | | 143 | 3 |
| TOYOTA | | 2008 | DP | 27.5 | 34.0 | | 481,617 | 3 |
| TOYOTA | | 2008 | IP | 27.5 | 38.3 | | 662,079 | 3 |
| TOYOTA | | 2008 | LT | 22.5 | 23.9 | | 1,067,804 | 3 |
| VW | | 2008 | IP | 27.5 | 29.1 | | 291,483 | 3 |
| VW | (2) | 2008 | LT | 22.4 | 20.2 | | 26,999 | 3 |

(1) - Aston Martin and Spyker's petitions for an alternate standard are pending.

(2) - Manufacturer opted for the reformed light truck standard.

(3) - EPA did not test vehicles of manufacturers who produce only electric vehicles. CAFE and volume values shown are final values submitted to EPA.

MODEL YEAR 2007

| <u>MANUFACTURER</u> | <u>YEAR</u> | <u>FLEET</u> | <u>STD</u> | <u>CAFE</u> | <u>ADJ</u> | <u>VOLUME</u> | <u>SOURCE</u> |
|---------------------|-------------|--------------|------------|-------------|------------|---------------|---------------|
| ASTON MARTIN | 2007 | IP | 27.5 | 17.8 | | 2,162 | 3 |
| BMW | 2007 | IP | 27.5 | 27.7 | | 269,176 | 3 |
| BMW | 2007 | LT | 22.2 | 23.4 | | 60,885 | 3 |
| DAIMLERCHRYSLER | 2007 | DP | 27.5 | 28.5 | | 505,191 | 3 |
| DAIMLERCHRYSLER | 2007 | LT | 22.2 | 22.9 | | 1,397,176 | 3 |
| DAIMLERCHRYSLER | 2007 | IP | 27.5 | 24.7 | | 190,288 | 3 |
| FERRARI | 2007 | IP | 27.5 | 16.2 | | 1,812 | 3 |
| FORD | 2007 | DP | 27.5 | 29.0 | | 938,551 | 3 |
| FORD | 2007 | LT | 22.2 | 22.3 | | 1,213,357 | 3 |
| FORD | 2007 | IP | 27.5 | 30.0 | | 232,561 | 3 |
| GM | 2007 | DP | 27.5 | 30.0 | | 1,434,668 | 3 |
| GM | 2007 | LT | 22.2 | 22.4 | | 2,166,659 | 3 |
| GM | 2007 | IP | 27.5 | 32.3 | | 93,589 | 3 |
| HONDA | 2007 | DP | 27.5 | 33.5 | | 766,984 | 3 |
| HONDA | 2007 | IP | 27.5 | 39.3 | | 137,455 | 3 |
| HONDA | 2007 | LT | 22.2 | 25.1 | | 724,674 | 3 |
| HYUNDAI | 2007 | IP | 27.5 | 32.4 | | 284,055 | 3 |
| HYUNDAI | 2007 | LT | 22.2 | 25.5 | | 170,574 | 3 |
| KIA | 2007 | IP | 27.5 | 33.4 | | 166,587 | 3 |
| KIA | 2007 | LT | 22.2 | 24.2 | | 138,183 | 3 |
| LOTUS | 2007 | IP | 27.5 | 30.1 | | 732 | 3 |
| MASERATI | 2007 | IP | 27.5 | 17.4 | | 2,176 | 3 |
| MINI | 2007 | LT | 22.2 | 24.7 | | 44,678 | 3 |
| MINI | 2007 | IP | 27.5 | 28.7 | | 71,796 | 3 |
| NISSAN | 2007 | IP | 27.5 | 29.6 | | 191,336 | 3 |
| NISSAN | 2007 | DP | 27.5 | 33.4 | | 354,989 | 3 |
| NISSAN | 2007 | LT | 22.2 | 22.9 | | 366,606 | 3 |
| PORSCHE | 2007 | IP | 27.5 | 26.5 | | 22,500 | 3 |
| SPYKER | 2007 | IP | 18.9 | 19.6 | | 7 | 3 |
| SUBARU | 2007 | DP | 27.5 | 29.5 | | 14,963 | 3 |
| SUBARU | 2007 | IP | 27.5 | 28.5 | | 83,183 | 3 |
| SUBARU | 2007 | LT | 22.2 | 27.1 | | 54,285 | 3 |
| SUZUKI | 2007 | IP | 27.5 | 30.3 | | 63,173 | 3 |
| SUZUKI | 2007 | LT | 22.2 | 23.8 | | 48,074 | 3 |
| TOYOTA | 2007 | DP | 27.5 | 31.3 | | 696,442 | 3 |
| TOYOTA | 2007 | IP | 27.5 | 38.3 | | 1,060,899 | 3 |
| TOYOTA | 2007 | LT | 22.2 | 23.7 | | 1,083,811 | 3 |
| VW | 2007 | IP | 27.5 | 28.8 | | 286,947 | 3 |
| VW | 2007 | LT | 22.2 | 19.5 | | 30,358 | 3 |

MODEL YEAR 2006

| <u>MANUFACTURER</u> | <u>YEAR</u> | <u>FLEET</u> | <u>STD</u> | <u>CAFE</u> | <u>ADJ</u> | <u>VOLUME</u> | <u>SOURCE</u> |
|---------------------|-------------|--------------|------------|-------------|------------|---------------|---------------|
| BMW | 2006 | IP | 27.5 | 27.2 | | 306,425 | 3 |
| BMW | 2006 | LT | 21.6 | 21.2 | | 60,643 | 3 |
| DAIMLERCHRYSLER | 2006 | DP | 27.5 | 26.0 | | 512,093 | 3 |
| DAIMLERCHRYSLER | 2006 | LT | 21.6 | 21.7 | | 1,572,723 | 3 |
| DAIMLERCHRYSLER | 2006 | IP | 27.5 | 24.7 | | 196,480 | 3 |
| FERRARI | 2006 | IP | 27.5 | 16.5 | | 1,392 | 3 |
| FORD | 2006 | DP | 27.5 | 28.2 | | 918,794 | 3 |
| FORD | 2006 | LT | 21.6 | 21.1 | | 1,416,745 | 3 |
| FORD | 2006 | IP | 27.5 | 29.8 | | 229,742 | 3 |
| GM | 2006 | DP | 27.5 | 29.9 | | 1,512,127 | 3 |
| GM | 2006 | LT | 21.6 | 22.8 | | 1,845,770 | 3 |
| GM | 2006 | IP | 27.5 | 29.0 | | 101,193 | 3 |
| HONDA | 2006 | DP | 27.5 | 33.8 | | 698,092 | 3 |
| HONDA | 2006 | IP | 27.5 | 34.5 | | 118,604 | 3 |
| HONDA | 2006 | LT | 21.6 | 24.7 | | 662,394 | 3 |
| HYUNDAI | 2006 | IP | 27.5 | 30.1 | | 336,045 | 3 |
| HYUNDAI | 2006 | LT | 21.6 | 25.2 | | 88,201 | 3 |
| KIA | 2006 | IP | 27.5 | 32.8 | | 167,247 | 3 |
| KIA | 2006 | LT | 21.6 | 22.8 | | 150,411 | 3 |
| LOTUS | 2006 | IP | 27.5 | 30.8 | | 1,424 | 3 |
| MASERATI | 2006 | IP | 27.5 | 17.0 | | 2,437 | 3 |
| MITSUBISHI | 2006 | LT | 21.6 | 23.9 | | 33,176 | 3 |
| MITSUBISHI | 2006 | IP | 27.5 | 29.5 | | 101,433 | 3 |
| NISSAN | 2006 | IP | 27.5 | 24.3 | | 130,849 | 3 |
| NISSAN | 2006 | DP | 27.5 | 31.1 | | 494,029 | 3 |
| NISSAN | 2006 | LT | 21.6 | 21.9 | | 451,578 | 3 |
| PORSCHE | 2006 | IP | 27.5 | 26.3 | | 24,081 | 3 |
| PORSCHE | 2006 | LT | 21.6 | 18.5 | | 17,657 | 3 |
| SALEEN | 2006 | DP | 27.5 | 13.2 | | 16 | 3 |
| SPYKER | 2006 | IP | 18.9 | 19.3 | | 13 | 3 |
| SUBARU | 2006 | DP | 27.5 | 29.1 | | 21,696 | 3 |
| SUBARU | 2006 | IP | 27.5 | 28.3 | | 96,392 | 3 |
| SUBARU | 2006 | LT | 21.6 | 26.2 | | 95,331 | 3 |
| SUZUKI | 2006 | IP | 27.5 | 30.1 | | 69,867 | 3 |
| SUZUKI | 2006 | LT | 21.6 | 24.0 | | 46,728 | 3 |
| TOYOTA | 2006 | DP | 27.5 | 34.6 | | 743,099 | 3 |
| TOYOTA | 2006 | IP | 27.5 | 35.0 | | 463,484 | 3 |
| TOYOTA | 2006 | LT | 21.6 | 23.7 | | 1,071,479 | 3 |
| VW | 2006 | IP | 27.5 | 30.1 | | 335,586 | 3 |
| VW | 2006 | LT | 21.6 | 20.1 | | 12,213 | 3 |

MODEL YEAR 2005

| <u>MANUFACTURER</u> | <u>YEAR</u> | <u>FLEET</u> | <u>STD</u> | <u>CAFE</u> | <u>ADJ</u> | <u>VOLUME</u> | <u>SOURCE</u> |
|---------------------|-------------|--------------|------------|-------------|------------|---------------|---------------|
| BMW | 2005 | IP | 27.5 | 27.2 | | 169,424 | 3 |
| BMW | 2005 | LT | 21.0 | 21.3 | | 65,416 | 3 |
| DAIMLERCHRYSLER | 2005 | DP | 27.5 | 28.8 | | 528,854 | 3 |
| DAIMLERCHRYSLER | 2005 | LT | 21.0 | 21.4 | | 1,888,888 | 3 |
| DAIMLERCHRYSLER | 2005 | IP | 27.5 | 25.9 | | 191,994 | 3 |
| FERRARI/MASERATI | 2005 | IP | 27.5 | 15.4 | | 3,646 | 3 |
| FORD | 2005 | DP | 27.5 | 28.6 | | 992,105 | 3 |
| FORD | 2005 | LT | 21.0 | 21.6 | | 1,667,221 | 3 |
| FORD | 2005 | IP | 27.5 | 28.4 | | 221,605 | 3 |
| GM | 2005 | DP | 27.5 | 29.3 | | 1,671,634 | 3 |
| GM | 2005 | LT | 21.0 | 21.8 | | 2,168,570 | 3 |
| GM | 2005 | IP | 27.5 | 30.5 | | 108,598 | 3 |
| HONDA | 2005 | DP | 27.5 | 33.2 | | 697,090 | 3 |
| HONDA | 2005 | IP | 27.5 | 33.1 | | 132,522 | 3 |
| HONDA | 2005 | LT | 21.0 | 24.9 | | 561,059 | 3 |
| HYUNDAI | 2005 | IP | 27.5 | 30.5 | | 298,596 | 3 |
| HYUNDAI | 2005 | LT | 21.0 | 24.8 | | 135,325 | 3 |
| KIA | 2005 | IP | 27.5 | 29.5 | | 133,575 | 3 |
| KIA | 2005 | LT | 21.0 | 21.4 | | 158,150 | 3 |
| LOTUS | 2005 | IP | 27.5 | 29.4 | | 3,320 | 3 |
| MINI | 2005 | DP | 27.5 | 27.6 | | 8,471 | 3 |
| MINI | 2005 | LT | 21.0 | 23.6 | | 39,683 | 3 |
| MINI | 2005 | IP | 27.5 | 30.2 | | 60,034 | 3 |
| NISSAN | 2005 | IP | 27.5 | 24.8 | | 94,085 | 3 |
| NISSAN | 2005 | DP | 27.5 | 30.7 | | 559,064 | 3 |
| NISSAN | 2005 | LT | 21.0 | 21.7 | | 466,159 | 3 |
| PORSCHE | 2005 | IP | 27.5 | 24.7 | | 14,533 | 3 |
| PORSCHE | 2005 | LT | 21.0 | 18.5 | | 14,380 | 3 |
| SALEEN | 2005 | DP | 27.5 | 13.2 | | 18 | 3 |
| SPYKER | 2005 | IP | 27.5 | 19.3 | | 7 | 3 |
| SUBARU | 2005 | IP | 27.5 | 27.9 | | 124,276 | 3 |
| SUBARU | 2005 | LT | 21.0 | 27.4 | | 88,224 | 3 |
| SUZUKI | 2005 | IP | 27.5 | 29.7 | | 60,830 | 3 |
| SUZUKI | 2005 | LT | 21.0 | 22.9 | | 24,824 | 3 |
| TOYOTA | 2005 | DP | 27.5 | 34.4 | | 936,213 | 3 |
| TOYOTA | 2005 | IP | 27.5 | 36.6 | | 426,729 | 3 |
| TOYOTA | 2005 | LT | 21.0 | 23.1 | | 946,846 | 3 |
| VW | 2005 | IP | 27.5 | 29.1 | | 247,989 | 3 |
| VW | 2005 | LT | 21.0 | 20.1 | | 22,963 | 3 |

MODEL YEAR 2004

| <u>MANUFACTURER</u> | <u>YEAR</u> | <u>FLEET</u> | <u>STD</u> | <u>CAFE</u> | <u>ADJ</u> | <u>VOLUME</u> | <u>SOURCE</u> |
|---------------------|-------------|--------------|------------|-------------|------------|---------------|---------------|
| BMW | 2004 | IP | 27.5 | 26.4 | | 226,634 | 3 |
| BMW | 2004 | LT | 20.7 | 21.5 | | 68,206 | 3 |
| DAIMLERCHRYSLER | 2004 | DP | 27.5 | 29.6 | | 543,939 | 3 |
| DAIMLERCHRYSLER | 2004 | LT | 20.7 | 20.5 | | 1,595,195 | 3 |
| DAIMLERCHRYSLER | 2004 | IP | 27.5 | 26.9 | | 258,708 | 3 |
| FERRARI/MASERATI | 2004 | IP | 27.5 | 15.0 | | 2,198 | 3 |
| FORD | 2004 | DP | 27.5 | 26.7 | | 788,421 | 3 |
| FORD | 2004 | LT | 20.7 | 21.0 | | 1,858,510 | 3 |
| FORD | 2004 | IP | 27.5 | 27.7 | | 280,651 | 3 |
| GM | 2004 | DP | 27.5 | 29.3 | | 1,845,034 | 3 |
| GM | 2004 | LT | 20.7 | 21.4 | | 2,355,617 | 3 |
| GM | 2004 | IP | 27.5 | 30.3 | | 120,420 | 3 |
| HONDA | 2004 | DP | 27.5 | 33.1 | | 718,232 | 3 |
| HONDA | 2004 | IP | 27.5 | 32.7 | | 106,188 | 3 |
| HONDA | 2004 | LT | 20.7 | 24.6 | | 540,471 | 3 |
| HYUNDAI | 2004 | IP | 27.5 | 29.6 | | 293,663 | 3 |
| HYUNDAI | 2004 | LT | 20.7 | 24.2 | | 130,385 | 3 |
| ISUZU | 2004 | LT | 20.7 | 23.1 | | 20,210 | 3 |
| KIA | 2004 | IP | 27.5 | 29.1 | | 167,681 | 3 |
| KIA | 2004 | LT | 20.7 | 20.5 | | 100,544 | 3 |
| LOTUS | 2004 | IP | 27.5 | 20.8 | | 39 | 3 |
| NISSAN | 2004 | IP | 27.5 | 28.9 | | 265,776 | 3 |
| NISSAN | 2004 | DP | 27.5 | 27.9 | | 207,494 | 3 |
| NISSAN | 2004 | LT | 20.7 | 21.2 | | 493,016 | 3 |
| PORSCHE | 2004 | IP | 27.5 | 23.3 | | 13,963 | 3 |
| PORSCHE | 2004 | LT | 20.7 | 18.3 | | 24,027 | 3 |
| QUANTUM | 2004 | DP | 27.5 | 32.3 | | 391 | 3 |
| SALEEN | 2004 | DP | 27.5 | 13.4 | | 8 | 3 |
| SUBARU | 2004 | IP | 27.5 | 27.2 | | 162,699 | 3 |
| SUBARU | 2004 | LT | 20.7 | 25.4 | | 2,208 | 3 |
| SUZUKI | 2004 | IP | 27.5 | 29.5 | | 57,969 | 3 |
| SUZUKI | 2004 | LT | 20.7 | 22.8 | | 30,950 | 3 |
| TOYOTA | 2004 | DP | 27.5 | 33.2 | | 756,543 | 3 |
| TOYOTA | 2004 | IP | 27.5 | 32.4 | | 236,648 | 3 |
| TOYOTA | 2004 | LT | 20.7 | 22.7 | | 1,081,706 | 3 |
| VW | 2004 | IP | 27.5 | 29.0 | | 313,947 | 3 |
| VW | 2004 | LT | 20.7 | 19.2 | | 45,377 | 3 |

MODEL YEAR 2003

| <u>MANUFACTURER</u> | <u>YEAR</u> | <u>FLEET</u> | <u>STD</u> | <u>CAFE</u> | <u>ADJ</u> | <u>VOLUME</u> | <u>SOURCE</u> |
|---------------------|-------------|--------------|------------|-------------|------------|---------------|---------------|
| BMW | 2003 | IP | 27.5 | 26.8 | | 230,176 | 3 |
| BMW | 2003 | LT | 20.7 | 20.0 | | 43,552 | 3 |
| DAEWOO | 2003 | IP | 27.5 | 29.1 | | 1,729 | 3 |
| DAIMLERCHRYSLER | 2003 | DP | 27.5 | 29.7 | | 498,296 | 3 |
| DAIMLERCHRYSLER | 2003 | LT | 20.7 | 22.2 | | 1,540,670 | 3 |
| DAIMLERCHRYSLER | 2003 | IP | 27.5 | 26.3 | | 294,104 | 3 |
| FERRARI/MASERATI | 2003 | IP | 27.5 | 14.5 | | 1,594 | 3 |
| FORD | 2003 | DP | 27.5 | 27.9 | | 1,136,369 | 3 |
| FORD | 2003 | LT | 20.7 | 21.3 | | 1,956,347 | 3 |
| FORD | 2003 | IP | 27.5 | 28.2 | | 207,599 | 3 |
| GM | 2003 | DP | 27.5 | 28.9 | | 1,872,984 | 3 |
| GM | 2003 | LT | 20.7 | 21.3 | | 2,448,092 | 3 |
| GM | 2003 | IP | 27.5 | 28.3 | | 48,812 | 3 |
| HONDA | 2003 | DP | 27.5 | 34.4 | | 378,129 | 3 |
| HONDA | 2003 | IP | 27.5 | 31.9 | | 498,229 | 3 |
| HONDA | 2003 | LT | 20.7 | 24.7 | | 560,024 | 3 |
| HYUNDAI | 2003 | IP | 27.5 | 30.4 | | 308,696 | 3 |
| HYUNDAI | 2003 | LT | 20.7 | 24.4 | | 98,515 | 3 |
| ISUZU | 2003 | LT | 20.7 | 22.3 | | 17,473 | 3 |
| KIA | 2003 | IP | 27.5 | 30.4 | | 138,709 | 3 |
| KIA | 2003 | LT | 20.7 | 19.7 | | 94,352 | 3 |
| LOTUS | 2003 | IP | 27.5 | 20.8 | | 96 | 3 |
| NISSAN | 2003 | IP | 27.5 | 27.4 | | 281,994 | 3 |
| NISSAN | 2003 | DP | 27.5 | 28.9 | | 225,388 | 3 |
| NISSAN | 2003 | LT | 20.7 | 21.9 | | 280,327 | 3 |
| PORSCHE | 2003 | IP | 27.5 | 24.1 | | 17,907 | 3 |
| PORSCHE | 2003 | LT | 20.7 | 18.0 | | 1,277 | 3 |
| QUANTUM | 2003 | DP | 27.5 | 32.4 | | 313 | 3 |
| SALEEN | 2003 | DP | 27.5 | 15.0 | | 13 | 3 |
| SUBARU | 2003 | IP | 27.5 | 27.6 | | 173,882 | 3 |
| SUBARU | 2003 | LT | 20.7 | 26.3 | | 14,966 | 3 |
| SUZUKI | 2003 | IP | 27.5 | 33.0 | | 33,931 | 3 |
| SUZUKI | 2003 | LT | 20.7 | 21.8 | | 29,429 | 3 |
| TOYOTA | 2003 | DP | 27.5 | 28.1 | | 17,504 | 3 |
| TOYOTA | 2003 | IP | 27.5 | 32.4 | | 1,107,167 | 3 |
| TOYOTA | 2003 | LT | 20.7 | 21.9 | | 727,041 | 3 |
| VW | 2003 | IP | 27.5 | 29.8 | | 420,273 | 3 |
| VW | 2003 | LT | 20.7 | 21.3 | | 9,918 | 3 |