

AHRQ ePSS for Palm

Installation / Upgrade Instructions

Mac OS

AHRQ ePSS 2.01.00

AHRQ Application Development Services

July 11, 2008

OVERVIEW 3

INSTALLATION INSTRUCTIONS FOR PALM (MAC OS) 3

UPGRADE INSTRUCTIONS FOR PALM (MAC OS)..... 5

OVERVIEW

Complete the following instructions to download and install / upgrade the AHRQ ePSS application on your Palm device.

INSTALLATION INSTRUCTIONS FOR PALM (Mac OS)

1. [Download](#) **AHRQePSSPalm.dmg** from <http://epss.ahrq.gov> and save it to your Mac
2. Double click the **AHRQePSSPalm.dmg** file to mount the **AHRQePSSPalm** volume
3. Double click to explore the **AHRQePSSPalm** volume and copy the **AHRQePSS** directory to your desktop
4. Open the **AHRQePSS** folder
5. **Main Memory** installation: Copy the following files to “/Document/Palm/Users/(your palm device name)/Files to install” (Figure 1).

Secure Digital (SD) card installation: Copy the following files to “Document/Palm/Users/(your palm device name)/Files to install/SecureDigital (SD) card” (Figure 2).

- **DBSpecRecom-Ahrq.pdb**
- **DBSpecRecomTargetPop-Ahrq.pdb**
- **DBSpecRecomTools-Ahrq.pdb**
- **DBTools-Ahrq.pdb**
- **DBTopics-Ahrq.pdb**
- **PalmCPSSAHRQ.prc**

6. Perform **HotSync** operation to install the ePSS Palm application to your Palm device.

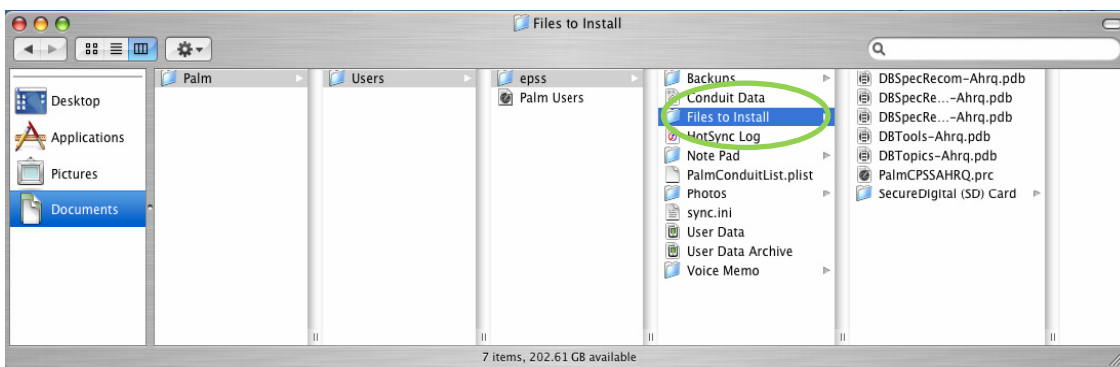


Figure 1: Main Memory Installation



Figure 2: Expansion Card Installation

UPGRADE INSTRUCTIONS FOR PALM (Mac OS)

1. Click on the **Delete** menu item from the **App** menu (Figure 3)

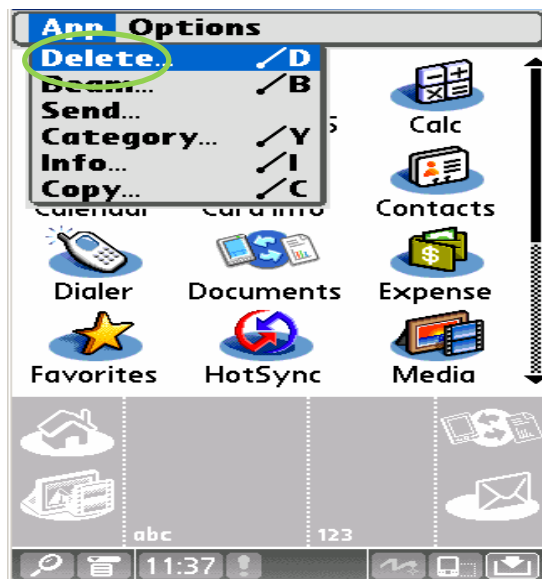


Figure 3: Delete Menu item

2. **Upgrade to Device Main Memory:**
 - Click on the **AHRQ ePSS** to and click **Delete** (Figure 4)
 - Delete the following files by selecting each and clicking the **Delete** button (Figure 4)
 - **DBSpecRecom-Ahrq.pdb**
 - **DBSpecRecomTargetPop-Ahrq.pdb**
 - **DBSpecRecomTools-Ahrq.pdb**
 - **DBTools-Ahrq.pdb**
 - **DBTopics-Ahrq.pdb**

3. Upgrade to Secure Digital (SD) card :

- Click on the **AHRQ ePSS** to and click **Delete** (Figure 5)
From the “**Delete From:**” Drop down box click on the **Device** and click on the **SD Card** (Figure 6)
- Delete the following files by selecting each and clicking the **Delete** button (Figure 5)
 - **DBSpecRecom-Ahrq.pdb**
 - **DBSpecRecomTargetPop-Ahrq.pdb**
 - **DBSpecRecomTools-Ahrq.pdb**
 - **DBTools-Ahrq.pdb**
 - **DBTopics-Ahrq.pdb**

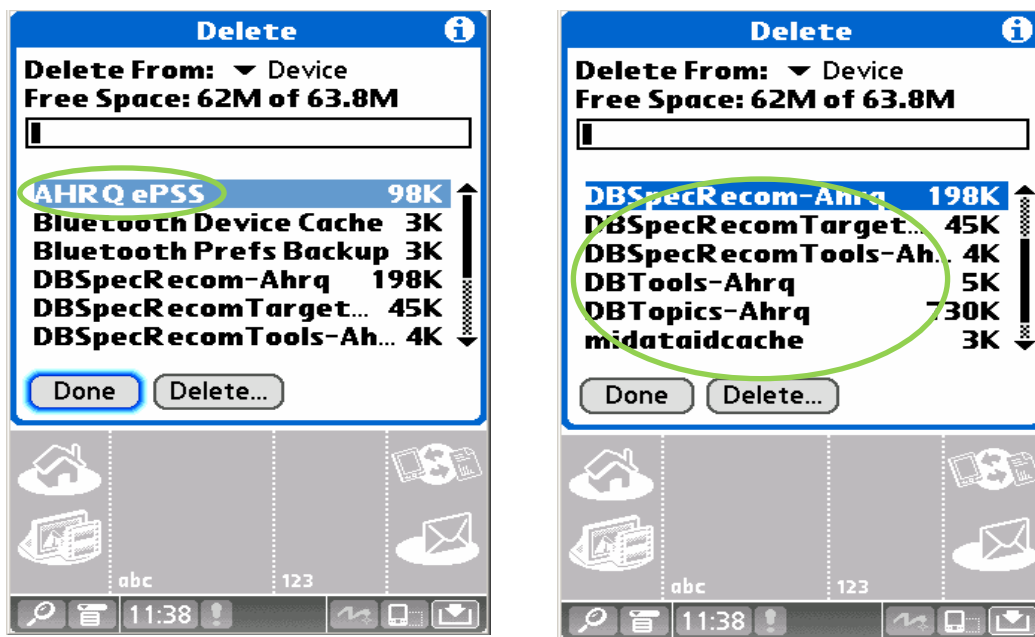


Figure 4: Delete AHRQ ePSS and PDB Files

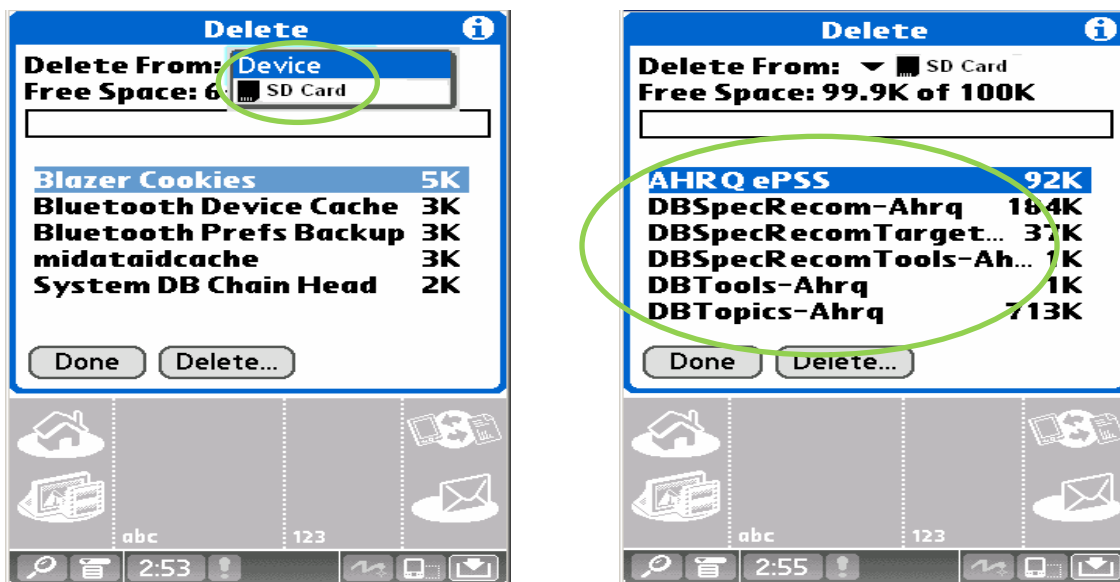


Figure 5: Delete AHRQ ePSS and PDB files from SD Card

4. Click **Done** to complete the deletion process
5. [Download](http://epss.ahrq.gov) **AHRQePSSPalm.dmg** from <http://epss.ahrq.gov> and save it to your Mac
6. Double click the **AHRQePSSPalm.dmg** file to mount the **AHRQePSSPalm** volume
7. Double click to explore the **AHRQePSSPalm** volume and copy the **AHRQePSS** directory to your desktop
8. Open the **AHRQePSS** folder
9. **Main Memory** installation: Copy the following files to “/Document/Palm/Users/(your palm device name)/Files to install” (Figure 6).

Secure Digital (SD) card installation: Copy the following files to

“Document/Palm/Users/(your palm device name)/Files to install/SecureDigital (SD) card” (Figure 7).

- **DBSpecRecom-Ahrq.pdb**
- **DBSpecRecomTargetPop-Ahrq.pdb**
- **DBSpecRecomTools-Ahrq.pdb**
- **DBTools-Ahrq.pdb**
- **DBTopics-Ahrq.pdb**
- **PalmCPSSAHRQ.prc**

10. Perform **HotSync** operation to install the ePSS Palm application to your Palm device.

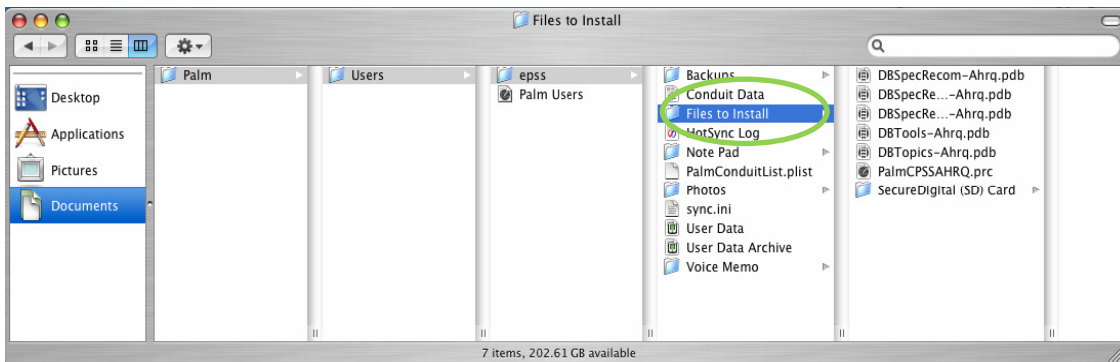


Figure 6: Main Memory Installation

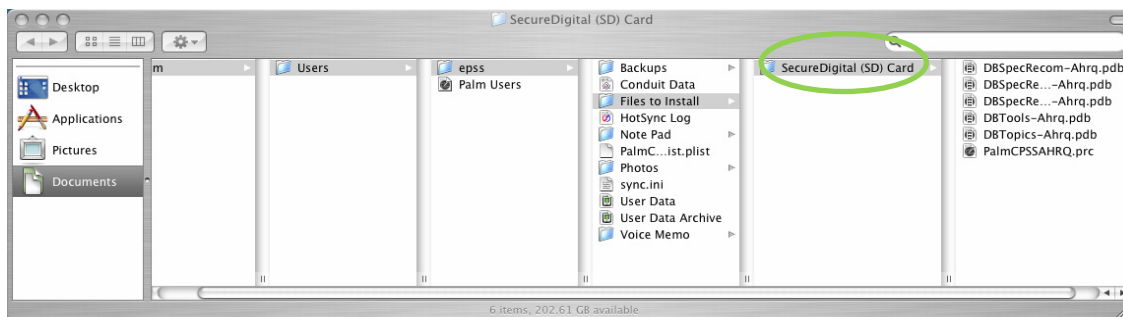


Figure 7: Expansion Card Installation