

No. 255.—THE MILITIA FORCE OF THE UNITED STATES ACCORDING TO THE LATEST RETURNS RECEIVED AT THE OFFICE OF THE ADJUTANT-GENERAL, U. S. ARMY, FOR THE YEAR 1893.

[From Report to Congress of the Adjutant-General.]

States and Territories.	Commissioned officers.					Enlisted men.				
	Cavalry.	Light batteries.	Infantry.	Other. a	Total.	Cavalry.	Light batteries.	Infantry.	Other. a	Total.
Alabama	12	15	166	104	297	170	197	2,296		2,663
Arkansas	4	3	59	13	79	40	20	842		902
California	4	10	273	156	443	60	112	3,812	517	4,501
Colorado	6	3	56	41	106	88	44	562	27	721
Connecticut		9	163	18	190		104	2,381	76	2,561
Delaware	6		30	14	50	48		232		280
Florida		4	80	11	95		60	856		916
Georgia	62	8	257	49	376	534	102	2,523		3,159
Idaho			16	8	24			208		208
Illinois	6	8	277	56	347	99	122	4,205	4	4,430
Indiana		14	179	10	203		183	2,247		2,430
Iowa			188	42	230			2,082	3	2,085
Kansas			105	18	123			1,543		1,543
Kentucky			109	17	126			1,205		1,205
Louisiana	2	35	69	14	120	52	367	710		1,129
Maine			76	12	88			961	15	976
Maryland			160	10	170			1,948		1,948
Massachusetts	19	22	284	118	443	237	299	3,899	688	5,123
Michigan			158	30	188			2,613		2,613
Minnesota		11	95	28	134		88	1,579		1,667
Mississippi	7		92	49	148	93		1,197	267	1,557
Missouri		9	132	22	163		144	1,977	131	2,252
Montana		3	35	11	49		35	442		477
Nebraska	3	3	75	18	99	38	49	900		987
Nevada		3	33	18	54		58	380	1	439
New Hampshire	3	4	97	10	114	55	68	1,013	5	1,141
New Jersey	3	4	231	51	289	52	68	3,500	6	3,626
New York	6	22	626	83	737	105	367	11,517	84	12,073
North Carolina	3		138	43	184	37		1,403	158	1,598
North Dakota	10	4	33	3	50	62	50	317		429
Ohio	9	45	358	18	430	81	483	5,017	114	5,605
Oregon	6	4	96	14	120	100	42	1,313		1,455
Pennsylvania	15	18	564	83	680	178	230	7,223	303	7,934
Rhode Island	13	6	68	83	170	90	90	724	402	1,306
South Carolina	169	4	331	87	591	1,375	427	3,047		4,849
South Dakota		3	67	23	93		43	643		686
Tennessee		7	67	58	132		104	1,029	529	1,662
Texas	37	16	185	89	277	383	128	1,990	6	2,507
Vermont		8	48	23	79		72	585	48	705
Virginia	32	20	185	10	247	294	196	2,484		2,974
Washington	17		81	34	132	248		1,322		1,570
West Virginia			69	11	80			820		820
Wisconsin	4	5	169	17	195	58	56	2,412		2,526
Wyoming			36	10	46			369		369
TERRITORIES.										
Alaska ^b				8	104					366
Arizona			96	16	48			369		421
New Mexico			32	16	48			421		421
Oklahoma ^b										
Utah ^b										
District of Columbia	2	3	115	15	135	39	41	1,217	131	1,428
Total	460	333	6,859	1,026	9,278	4,616	4,449	90,332	3,515	102,012

^a Includes general staff, signal corps, hospital and ambulance corps, naval brigade, cadet corps, etc.
^b No organized militia.

Source: Statistical Abstract of the United States: 1893 Edition.

National Security and Veterans Affairs

This section displays data for national security (national defense and homeland security) and benefits for veterans. Data are presented on national defense and its human and financial costs; active and reserve military personnel; and federally sponsored programs and benefits for veterans, and funding, budget and selected agencies for homeland security. The principal sources of these data are the annual *Selected Manpower Statistics* and the *Atlas/Data Abstract for the United States and Selected Areas* issued by the Office of the Secretary of Defense; *Annual Report of Secretary of Veterans Affairs*, Department of Veterans Affairs, *Budget in Brief*, Department of Homeland Security; and *The Budget of the United States Government*, Office of Management and Budget. For more data on expenditures and personnel, see Section 30.

Department of Defense (DOD)—The Department of Defense is responsible for providing the military forces of the United States. It includes the Office of the Secretary of Defense, the Joint Chiefs of Staff, the Army, the Navy, the Air Force, and the defense agencies. The President serves as Commander-in-Chief of the Armed Forces; from him, the authority flows to the Secretary of Defense and through the Joint Chiefs of Staff to the commanders of unified and specified commands (e.g., U.S. Strategic Command).

Reserve components—The Reserve Components of the Armed Forces consist of the Army National Guard of the United States, Army Reserve, Naval Reserve, Marine Corps Reserve, Air National Guard, Air Force Reserve, and Coast Guard Reserve. They provide trained personnel and units available for active duty in the Armed Forces during times of war or national emergency, and at such other times as national security may require. The National Guard has dual federal-state responsibilities and uses jointly provided equipment, facilities, and budget support. The President is empowered to mobilize the National Guard and to use such of the

Armed Forces as he considers necessary to enforce federal authority in any state. There is in each Armed Force a Ready Reserve, a Standby Reserve, and a Retired Reserve. The Ready Reserve includes the Selected Reserve, which provides trained and ready units and individuals to augment the active forces during times of war or national emergency, or at other times when required; and the Individual Ready Reserves, which is a manpower pool, that can be called to active duty during times of war or national emergency and would normally be used as individual fillers for active, guard and reserve units, and as a source of combat replacements. Most of the Ready Reserve serves in an active status. The Standby Reserve cannot be called to active duty, other than for training, unless authorized by Congress under “full mobilization,” and a determination is made that there are not enough qualified members in the Ready Reserve in the required categories who are readily available. The Retired Reserve represents a lower potential for involuntary mobilization.

Department of Veterans Affairs

(VA)—The Department of Veterans Affairs administers laws authorizing benefits for eligible former and present members of the Armed Forces and for the beneficiaries of deceased members. Veterans benefits available under various acts of Congress include compensation for service-connected disability or death; vocational rehabilitation, education, and training; home loan insurance; life insurance; health care; special housing and automobiles or other conveyances for certain disabled veterans; burial and plot allowances; and educational assistance to families of deceased or totally disabled veterans, servicemen missing in action, or prisoners of war. Since these benefits are legislated by Congress, the dates they were enacted and the dates they apply to veterans may be different from the actual dates the conflicts occurred.

VA estimates of veterans cover all persons discharged from active U.S. military service under conditions other than dishonorable.

Homeland Security—In an effort to increase homeland security following the September 11, 2001, terrorist attacks on the United States, President George W. Bush issued the *National Strategy for Homeland Security* in July 2002 and signed legislation creating the Department of Homeland Security (DHS) in November 2002.

The *National Strategy* sets forth a plan to improve homeland security through 43 initiatives that fall within six critical mission areas. These mission areas are intelligence and warning, border and transportation security, domestic counterterrorism, protection of critical infrastructure, defense against catastrophic terrorism, and emergency preparedness and response. The first three mission areas focus primarily on preventing terrorist attacks; the next two on reducing our nation's vulnerabilities; and the final one on minimizing the damage and recovery from attacks that do occur.

The funding and activities of homeland security are not only carried out by DHS, but also by other federal agencies, state, and local entities. In addition to DHS, there are 32 other federal agencies that comprise federal homeland security funding. DHS, along with four other agencies—Department of Defense (DOD), Energy (DOE), Health and Human Services (HHS), and Justice (DOJ)—account for over 90 percent of federal spending for homeland security.

Department of Homeland Security (DHS)—The mission of DHS is to lead a unified effort to secure the United States. This effort is to prevent and deter terrorist attacks and to protect against and respond to threats and hazards to the nation. This effort is to ensure safe and secure borders, to welcome lawful immigrants and visitors, and to promote the free flow of commerce.

The creation of the Department of Homeland Security, which began operations in March 2003, represents a fusion of 22 federal agencies (legacy agencies) to coordinate and centralize the leadership of

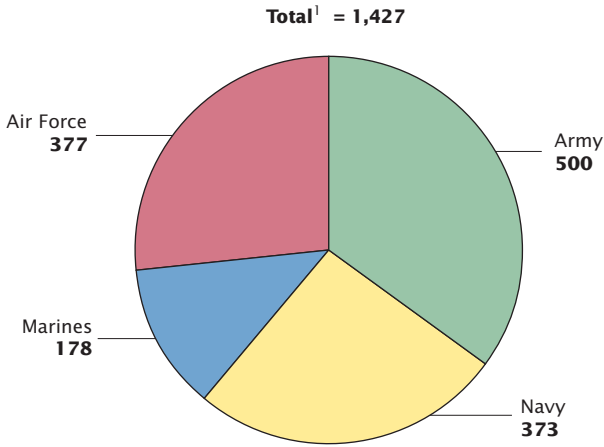
many homeland security activities under a single department. Twenty of these agencies are housed in one of the four major directorates of DHS. These four directorates are: Border and Transportation Security, Emergency Preparedness and Response, Science and Technology, and Information Analysis and Infrastructure. The Secret Service and Coast Guard remain intact and report directly to the Secretary. Immigration and Naturalization Services (INS) adjudications and benefits programs report directly to the Deputy Secretary as the U.S. Citizenship and Immigration Services (USCIS).

The Customs and Border Protection (CBP) is responsible for managing, securing, and controlling U.S. borders. This includes carrying out traditional border-related responsibilities, such as stemming the tide of illegal drugs and illegal aliens; securing and facilitating legitimate global trade and travel; and protecting the food supply and agriculture industry from pests and disease. CBP is composed of the Border Patrol and Inspections (both moved from INS) along with Customs (absorbed from the Department of Treasury) and Animal and Plant Health Inspections Services (absorbed from the Department of Agriculture).

Immigration and Customs Enforcement (ICE) is the largest investigation arm of DHS. ICE's mission is to prevent acts of terrorism by targeting the people, money, and materials that support terrorist and criminal activities. Selected responsibilities include the enforcement of immigration customs laws within the U.S., the protection of specified federal buildings, and air and marine enforcement. ICE is composed of five law enforcement divisions: Investigations, Intelligence, Federal Air Marshal Service, Federal Protective Service, and Apprehension, Detention, and Removal.

The Transportation Security Administration (TSA) was created as part of the Aviation and Transportation Security Act on November 19, 2001. TSA was originally part of the Department of Transportation, but was moved to Department of Homeland Security. TSA's mission is to provide security to our nation's transportation systems with a primary focus on aviation security.

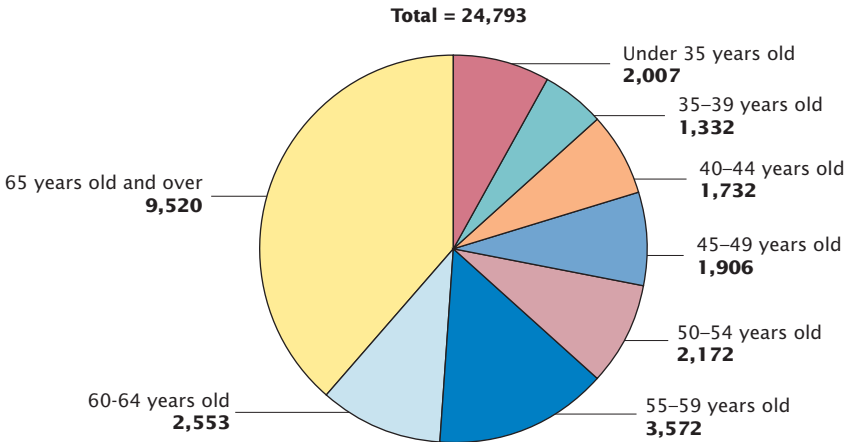
Figure 10.1
Department of Defense Manpower: 2004
(In thousands)



¹Includes National Guard, Reserve, and retired regular personnel on extended or continuous active duty. Excludes Coast Guard.

Source: Figure 10.1 prepared by U.S. Census Bureau. For data, see Table 501.

Figure 10.2
Living Veterans by Age: 2004
(In thousands)



Source: Figure 10.2 prepared by U.S. Census Bureau. For data, see Table 510.

Table 490. National Defense Outlays and Veterans Benefits: 1960 to 2006

[[53.5 represents \$53,500,000,000]. For fiscal year ending in year shown, see text, section 8. Includes outlays of Department of Defense, Department of Veterans Affairs, and other agencies for activities primarily related to national defense and veterans programs. For explanation of average annual percent change, see Guide to Tabular Presentation. Minus sign (-) indicates decrease]

Year	National defense and veterans outlays				Annual percent change ¹			Defense outlays percent of—	
	Total outlays (bil. dol.)	Defense outlays		Veterans' outlays (bil. dol.)	Total outlays	Defense outlays	Veterans' outlays	Federal outlays	Gross domestic product ²
		Current dollars (bil. dol.)	Constant (FY2000) dollars (bil. dol.)						
1960	53.5	48.1	300.2	5.4	2.5	2.4	3.1	52.2	9.3
1965	56.3	50.6	291.8	5.7	-6.8	-7.6	0.7	42.8	7.4
1970	90.4	81.7	375.1	8.7	0.3	-1.0	13.6	41.8	8.1
1975	103.1	86.5	262.7	16.6	11.2	9.0	24.0	26.0	5.5
1980	155.1	134.0	267.1	21.1	13.9	15.2	6.3	22.7	4.9
1985	279.0	252.7	356.5	26.3	10.3	11.1	2.7	26.7	6.1
1990	328.4	299.3	382.7	29.1	-1.6	-1.4	-3.2	23.9	5.2
1993	326.8	291.1	340.3	35.7	-1.7	-2.4	4.7	20.7	4.4
1994	319.2	281.6	322.8	37.6	-2.3	-3.2	5.4	19.3	4.1
1995	310.0	272.1	305.9	37.9	-2.9	-3.4	0.8	17.9	3.7
1996	302.7	265.8	289.2	37.0	-2.3	-2.3	-2.4	17.0	3.5
1997	309.8	270.5	288.4	39.3	2.3	1.8	6.3	16.9	3.3
1998	310.2	268.5	282.6	41.8	0.1	-0.8	6.3	16.2	3.1
1999	320.2	274.9	283.7	43.2	3.2	2.4	3.4	16.1	3.0
2000	341.6	294.5	294.5	47.1	6.7	7.1	9.0	16.5	3.0
2001	350.5	305.5	297.5	45.0	2.6	3.7	-4.3	16.4	3.0
2002	399.5	348.6	330.8	51.0	14.0	14.1	13.2	17.3	3.4
2003	461.9	404.9	366.6	57.0	15.6	16.2	11.8	18.7	3.7
2004	515.7	455.9	404.7	59.8	11.6	12.6	4.8	19.9	3.9
2005, est.	534.0	465.9	406.0	68.2	3.6	2.2	14.0	18.8	3.8
2006, est.	515.8	447.4	383.4	68.4	-3.4	-4.0	0.3	17.4	3.5

¹ Change from immediate prior year; for 1960, change from 1955. ² Represents fiscal year GDP; for definition, see text, Section 13.

Source: U.S. Office of Management and Budget, Budget of the United States Government, *Historical Tables*, annual. See also, <<http://www.whitehouse.gov/omb/budget>>.

Table 491. Federal Budget Outlays for Defense Functions: 1990 to 2005

[In billions of dollars (299.3 represents \$299,300,000,000), except percent. For year ending September 30. Minus sign (-) indicates decrease]

Defense function	1990	1995	1997	1998	1999	2000	2001	2002	2003	2004	2005, est.
Total	299.3	272.1	270.5	268.5	274.9	294.5	305.5	348.6	404.9	455.9	465.9
Percent change ¹	-1.4	-3.4	1.8	-0.8	2.4	7.1	3.7	14.1	16.2	12.6	2.2
Defense Dept., military	289.8	259.4	258.3	256.1	261.3	281.2	291.0	332.0	387.3	436.5	443.9
Military personnel	75.6	70.8	69.7	69.0	69.5	76.0	74.0	86.8	106.7	113.6	110.0
Operation, maintenance	88.3	91.0	92.4	93.4	96.3	105.9	112.0	130.0	151.4	174.0	174.5
Procurement	81.0	55.0	47.7	48.2	48.8	51.7	55.0	62.5	67.9	76.2	80.2
Research and development	37.5	34.6	37.0	37.4	37.4	37.6	40.5	44.4	53.1	60.8	65.6
Military construction	5.1	6.8	6.2	6.0	5.5	5.1	5.0	5.1	5.9	6.3	6.6
Family housing	3.5	3.6	4.0	3.9	3.7	3.4	3.5	3.7	3.8	3.9	3.9
Other ²	-1.2	-2.4	1.2	-1.9	0.1	1.6	1.1	-0.5	-1.5	1.7	3.2
Atomic energy activities ³	9.0	11.8	11.3	11.3	12.2	12.1	12.9	14.8	16.0	16.6	18.7
Defense-related activities ⁴	0.6	0.9	1.0	1.1	1.4	1.2	1.6	1.8	1.6	2.8	3.3

¹ Change from immediate prior year. ² Revolving and management funds, trust funds, special foreign currency program, allowances, and offsetting receipts. ³ Defense activities only. ⁴ Includes civil defense activities.

Source: U.S. Office of Management and Budget, Budget of the United States Government, *Historical Tables*, annual. See also, <<http://www.whitehouse.gov/omb/budget>>.

Table 492. National Defense—Budget Authority and Outlays: 1990 to 2005

[In billions of dollars (303.3 represents \$303,300,000,000). For year ending September 30.]

Item	1990	1995	1998	1999	2000	2001	2002	2003	2004	2005, est.
Defense (Budget authority) ¹	303.3	266.4	271.3	292.3	304.1	335.5	362.1	456.2	490.6	423.6
Department of Defense—Military	293.0	255.7	258.5	278.5	290.4	319.4	345.0	437.9	471.0	402.0
Atomic energy defense activities ¹	9.7	10.1	11.7	12.4	12.4	14.3	15.2	16.4	16.8	18.0
Defense-related activities	0.6	0.6	1.1	1.4	1.3	1.7	1.9	2.0	2.8	3.2
Defense (outlays) ¹	299.3	272.1	268.5	274.9	294.5	305.5	348.6	404.9	455.9	465.9
Department of Defense—Military	289.7	259.4	256.1	261.3	281.2	291.0	332.0	387.3	436.5	443.9
Atomic energy defense activities ¹	9.0	11.8	11.3	12.2	12.1	12.9	14.8	16.0	16.6	18.7
Defense-related activities	0.6	0.9	1.1	1.4	1.2	1.6	1.8	1.6	2.8	3.3

¹ Includes defense budget authority, balances, and outlays by other departments.

Source: U.S. Office of Management and Budget, Budget of the U.S. Government, *Historical Tables*, annual. See also, <<http://www.whitehouse.gov/omb/budget>>.

Table 493. Military Prime Contract Awards to All Businesses by Program: 1990 to 2004

[In billions of dollars (144.7 represents \$144,700,000,000). Net values for year ending September 30. Includes all new prime contracts; debit or credit changes in contracts are also included. Actions cover official awards, amendments, or other changes in prime contracts to obtain military supplies, services, or construction. Excludes term contracts and contracts which do not obligate a firm total dollar amount or fixed quantity, but includes job orders, task orders, and delivery orders against such contracts]

DOD procurement program	1990	1995	1998	1999	2000	2001	2002	2003	2004
Total	144.7	131.4	128.8	135.2	143.0	154.1	180.6	219.5	241.0
Intragovernmental ¹	10.0	12.3	9.9	11.6	14.8	13.4	17.0	19.5	19.8
For work outside the U.S.	7.1	5.6	5.6	7.4	7.5	7.1	9.3	16.2	25.5
Educ. and nonprofit institutions	3.5	3.3	3.5	3.9	4.3	4.5	5.5	6.2	6.4
With business firms for work in the U.S. ²	123.8	110.0	109.7	112.2	116.4	129.2	148.8	177.7	189.3
Major hard goods	79.1	56.0	56.0	57.5	59.8	67.9	76.1	90.6	99.0
Aircraft	24.0	18.8	20.8	23.3	28.8	30.5	30.6	41.1	40.4
Electronics and communication equip.	18.5	12.3	10.7	10.7	9.5	10.9	13.0	14.9	18.5
Missiles and space systems	17.1	10.6	9.9	9.5	8.2	8.2	11.2	13.3	14.6
Ships	10.3	9.1	8.6	7.8	8.3	12.0	11.4	10.2	12.3
Tanks, ammo. and weapons	9.2	5.3	6.0	6.2	5.0	6.3	9.8	11.0	13.3
Services	14.6	18.6	21.2	23.7	24.0	25.9	33.2	43.1	45.4

¹ Covers only purchases from other Federal agencies and reimbursable purchases on behalf of foreign governments. ² Includes Department of Defense. Includes other business not shown separately. Contracts awarded for work in U.S. possessions, and other areas subject to complete sovereignty of United States; contracts in a classified location; and any intragovernmental contracts entered into overseas.

Source: U.S. Department of Defense, Directorate for Information Operations and Reports, *Prime Contract Awards*, semiannual. See also <http://www.dior.whs.mil>.

Table 494. U.S. Military Sales and Assistance to Foreign Governments: 1995 to 2003

[In millions of dollars (8,080 represents \$8,080,000,000). For year ending September 30. Department of Defense (DoD) sales deliveries cover deliveries against sales orders authorized under Arms Export Control Act, as well as earlier and applicable legislation. For details regarding individual programs, see source]

Item	1995	1996	1997	1998	1999	2000	2001	2002	2003
Military sales agreements	8,080	9,070	8,234	8,379	11,158	10,952	12,788	12,236	12,700
Military construction sales agreements	24	135	29	474	301	283	124	72	221
Military sales deliveries ¹	12,100	11,710	15,671	13,183	16,879	10,533	12,054	10,385	9,706
Military sales financing	3,712	3,836	3,530	3,420	3,370	4,333	3,535	4,040	5,956
Military assistance programs ²	117	355	91	95	268	86	41	46	257
Military assistance program delivery ³	14	31	113	91	13	10	15	26	175
IMET program/deliveries ⁴	26	39	43	50	50	50	58	70	79

¹ Includes military construction sales deliveries. ² Also includes Military Assistance Service Funded (MASF) program data, Section 506(a) drawdown authority, and MAP Merger Funds. ³ Includes Military Assistance Service Funded (MASF) program data and Section 506(a) drawdown authority. ⁴ International Military Education & Training. Includes Military Assistance Service Funded and emergency drawdowns.

Source: U.S. Department of Defense, Defense Security Cooperation Agency, DSCA Data and Statistics. See also <http://www.dsca.osd.mil/datastats.htm>.

Table 495. U.S. Military Sales Deliveries by Selected Country: 1995 to 2003

[In millions of dollars (12,100 represents \$12,100,000,000). For year ending September 30. Represents Department of Defense military sales]

Country	1995	1996	1997	1998	1999	2000	2001	2002	2003
Total ¹	12,100	11,710	15,671	13,183	16,879	10,533	12,055	10,385	9,706
Australia	303	223	196	207	269	330	245	156	200
Bahrain	40	39	61	62	48	54	343	83	97
Belgium	8	157	107	194	250	58	170	68	72
Canada	127	154	83	111	96	84	110	85	164
China	1,332	829	2,370	1,423	2,505	785	1,166	1,418	637
Denmark	54	91	48	159	157	46	112	23	14
Egypt	1,479	1,083	897	551	448	805	862	1,950	1,032
France	65	52	57	35	248	217	142	207	169
Germany	261	404	208	191	278	136	390	222	245
Greece	220	210	691	397	463	315	448	454	1,329
Israel	327	386	456	1,195	1,214	562	741	650	829
Italy	54	77	51	43	106	41	97	103	188
Japan	693	753	488	409	442	477	494	476	411
Jordan	47	16	42	47	49	53	80	57	70
Korea, South	442	340	478	836	588	1,401	735	545	513
Kuwait	479	745	1,212	323	318	348	565	131	144
Netherlands	153	391	168	344	321	161	413	242	227
Norway	25	135	98	119	220	64	192	88	123
Portugal	88	19	70	21	12	20	42	28	116
Saudi Arabia	3,567	2,835	4,639	3,800	4,686	2,047	1,943	1,314	1,133
Singapore	59	80	133	232	549	131	244	422	169
Spain	193	411	216	133	324	141	267	178	160
Thailand	356	269	151	144	133	114	119	169	132
Turkey	368	481	1,153	532	856	217	466	280	498
United Arab Emirates	345	112	93	26	95	70	24	92	90
United Kingdom	419	401	432	430	366	347	525	386	364

¹ Includes countries not shown.

Source: U.S. Department of Defense, Defense Security Cooperation Agency, DSCA Data and Statistics. See also <http://www.dsca.osd.mil/datastats.htm>.

Table 496. Military and Civilian Personnel and Expenditures: 1990 to 2003

[Personnel in thousands (3,693 represents 3,693,000); expenditures in millions of dollars (209,904 represents 209,904,000,000). For year ending September 30. For definitions, see headnote, tables 497 and 499]

Item	1990	1995	2000	2001	2002	2003
Personnel, total ¹ (1,000)	3,693	3,391	2,791	2,781	2,811	2,806
Active duty military	1,185	1,085	984	991	1,045	1,071
Civilian	931	768	634	628	628	631
Reserve and National Guard	1,577	1,538	1,173	1,163	1,138	1,105
Expenditures, total ²	209,904	209,695	229,072	243,778	276,281	316,648
Payroll outlays	88,650	98,396	103,447	106,013	114,950	122,270
Active duty military pay	33,705	35,188	36,872	37,873	40,945	46,614
Civilian pay	28,230	29,932	29,935	29,879	32,805	35,041
Retired military pay	21,159	27,595	31,994	33,196	33,677	33,309
Reserve and National Guard pay	5,556	5,681	4,646	5,066	7,523	7,306
Prime contract awards ³	121,254	109,005	123,295	135,225	158,737	191,222
Grants	6,329	7,543	2,330	2,540	2,594	3,156

¹ Includes those based ashore and excludes those temporarily shore-based, in a transient status, or afloat. ² Includes expenditures not shown separately. ³ Represents contract awards over \$25,000.

Source: U.S. Department of Defense, Directorate for Information Operations and Reports, *Atlas/Data Abstract for the United States and Selected Areas*, annual. <<http://www.dior.whs.mil/mmid/Pubs.htm>>.

Table 497. Department of Defense Payroll and Contract Awards—States: 2003

[(In millions of dollars (122,270 represents \$122,270,000,000); For year ending September 30. Payroll outlays include the gross earnings of civilian and active duty military personnel for services rendered to the government and for cash allowances for benefits. Excludes employer's share of employee benefits, accrued military retirement benefits and most permanent change-of-station costs. Contracts, refer to awards made in year specified; expenditures relating to awards may extend over several years]

State	Payroll				State	Payroll			
	Total	Retired military	Contract awards ¹	Grants		Total	Retired military	Contract awards ¹	Grants
U.S.	122,270	33,309	191,222	3,156					
AL	2,764	857	6,281	37	MO	1,804	531	6,558	50
AK	1,123	130	1,427	27	MT	353	118	200	25
AZ	2,314	939	7,505	69	NE	779	221	315	38
AR	888	390	588	39	NV	970	478	457	16
CA	13,272	3,467	28,681	407	NH	285	171	545	17
CO	2,712	929	2,488	44	NJ	1,657	316	3,793	66
CT	623	171	8,065	43	NM	1,245	385	973	32
DE	383	118	1,688	19	NY	2,017	470	4,320	155
DC	2,163	56	1,845	33	NC	5,632	1,275	2,091	68
FL	8,105	3,518	8,108	184	ND	435	57	280	27
GA	5,971	1,383	3,447	54	OH	2,523	646	4,326	76
HI	3,038	276	1,808	42	OK	2,671	517	1,515	11
ID	439	185	213	21	OR	660	341	491	14
IL	2,497	527	2,565	86	PA	2,521	708	5,491	176
IN	1,106	316	2,607	40	RI	608	102	489	18
IA	339	143	667	34	SC	2,807	883	1,540	51
KS	1,341	334	1,222	27	SD	292	91	208	38
KY	2,215	361	3,897	17	TN	1,297	736	2,190	33
LA	1,647	428	1,914	80	TX	9,799	3,244	22,868	128
ME	692	178	1,182	20	UT	1,343	217	1,899	23
MD	4,548	906	7,570	151	VT	136	52	464	20
MA	980	298	6,800	156	VA	14,187	3,214	19,978	64
MI	1,040	359	2,524	116	WA	4,774	1,208	3,217	56
MN	541	222	1,565	52	WV	316	138	207	26
MS	1,601	393	2,326	53	WI	539	235	1,271	59
					WY	279	72	76	19

¹ Military awards for supplies, services, and construction. Net value of contracts of over \$25,000 for work in each state and DC. Figures reflect impact of prime contracting on state distribution of defense work. Often the State in which a prime contractor is located in is not the State where the subcontracted work is done. See also headnote, Table 493. Undistributed civilians and military personnel, their payrolls, and prime contract awards for performance in classified locations are excluded.

Source: U.S. Department of Defense, Directorate for Information Operations and Reports, *Atlas/Data Abstract for the United States and Selected Areas*, annual; <<http://www.dior.whs.mil/mmid/Pubs.htm>>.

Table 498. Expenditures and Personnel by Selected Major Locations: 2003

[In thousands of dollars (11,135,714 represents \$11,135,714,000) except for personnel. For year ending September 30]

Major locations	Expenditures			Major locations	Military and civilian personnel		
	Total	Payroll outlays	Grants/contracts		Total	Active duty military	Civilian
Fort Worth, TX	11,135,714	215,107	10,920,607	Fort Bragg, NC	48,206	42,634	5,572
San Diego, CA	7,340,029	3,180,150	4,159,879	Fort Hood, TX	47,163	43,522	3,641
St. Louis, MO	5,485,952	192,232	5,293,720	Camp Pendleton, CA	37,262	35,043	2,219
Norfolk, VA	4,922,561	3,060,366	1,862,195	San Diego, CA	34,318	22,263	12,055
Long Beach, CA	4,229,385	55,972	4,173,413	Camp Lejeune, NC	33,628	30,845	2,783
Huntsville, AL	4,166,884	241,170	3,925,714	Fort Campbell, KY	28,131	25,760	2,371
Arlington, VA	3,953,990	1,908,465	2,045,525	Norfolk, VA	26,217	16,989	9,228
Sunnyvale, CA	3,953,060	44,412	3,908,648	Arlington, VA	25,309	10,916	14,393
Washington, DC	3,281,861	1,403,730	1,878,131	Fort Benning, GA	22,954	19,881	3,073
Groton, CT	2,994,267	285,625	2,708,642	Washington, DC	22,918	8,979	13,930

Source: U.S. Department of Defense, Directorate for Information Operations and Reports, *Atlas/Data Abstract for the United States and Selected Areas*, annual. See also <<http://www.dior.whs.mil/mmid/Pubs.htm>>.

Table 499. Military and Civilian Personnel in Installations: 2003

[As of September 30. Civilian employees include United States citizens and foreign national direct-hire civilians subject to Office of Management and Budget (OMB) ceiling controls and civilian personnel involved in civil functions in the United States. Excludes indirect-hire civilians and those direct-hire civilians not subject to OMB ceiling controls. Military personnel include active duty personnel based ashore, excludes personnel temporarily shore-based in a transient status, or afloat]

State	Active military personnel				Reserve and National Guard, total	Civilian personnel			
	Total ¹	Army	Navy/ Marine Corps	Air Force		Total ¹	Army	Navy/ Marine Corps	Air Force
United States	1,070,511	394,550	364,990	310,971	1,104,669	630,567	216,642	177,008	153,107
Alabama	10,815	6,018	740	4,057	28,615	20,672	16,791	41	2,408
Alaska	16,282	6,327	117	9,838	5,638	4,549	2,433	16	1,746
Arizona	24,156	5,524	6,248	12,384	17,800	8,618	3,801	441	3,350
Arkansas	5,283	365	133	4,785	15,961	3,937	2,916	6	891
California	130,473	8,145	101,670	20,658	90,800	57,631	7,139	32,745	10,213
Colorado	31,386	16,471	931	13,984	20,004	10,122	2,645	41	5,077
Connecticut	4,215	47	4,136	32	9,618	2,534	501	1,110	262
Delaware	3,898	2	40	3,856	6,087	1,477	255	-	1,152
District of Columbia	11,942	4,754	3,980	3,208	8,958	15,483	4,530	9,731	934
Florida	55,820	3,485	26,510	25,825	50,304	27,369	3,223	12,481	8,789
Georgia	68,016	52,424	4,945	10,647	38,088	30,588	10,701	3,993	13,653
Hawaii	34,203	15,985	13,542	4,676	11,398	16,602	4,304	9,293	1,961
Idaho	4,353	41	89	4,223	6,796	1,451	655	46	692
Illinois	28,068	655	21,600	5,813	35,735	12,782	6,430	1,705	3,180
Indiana	1,104	526	457	121	24,244	9,032	1,812	3,285	1,070
Iowa	425	255	126	44	15,508	1,569	1,015	5	503
Kansas	16,547	13,264	163	3,120	14,962	5,925	4,456	1	1,098
Kentucky	35,177	34,586	377	214	16,576	8,423	6,821	198	250
Louisiana	17,827	9,545	2,095	6,187	26,252	6,979	3,606	1,240	1,735
Maine	2,764	245	2,484	35	6,812	6,267	339	5,250	273
Maryland	30,649	7,138	15,640	7,871	24,598	31,913	12,253	15,395	2,238
Massachusetts	2,476	242	557	1,677	20,794	6,702	2,413	263	2,896
Michigan	1,372	442	791	139	24,895	7,945	5,008	24	1,169
Minnesota	763	273	402	88	22,287	2,622	1,557	18	830
Mississippi	14,620	395	5,463	8,762	20,404	9,346	3,652	2,519	2,867
Missouri	15,685	9,358	2,227	4,100	26,935	9,131	5,837	256	1,204
Montana	3,713	25	17	3,671	5,813	1,217	481	-	684
Nebraska	7,449	121	563	6,765	8,797	3,713	1,415	16	1,908
Nevada	9,081	114	1,098	7,869	6,544	-2,075	341	311	1,234
New Hampshire	347	11	276	60	5,114	1,061	567	46	285
New Jersey	6,818	1,129	824	4,865	22,003	13,776	9,301	2,092	1,546
New Mexico	11,731	248	191	11,292	7,779	6,808	2,982	38	3,320
New York	21,450	17,715	3,297	438	45,047	11,149	6,891	156	2,556
North Carolina	96,560	42,701	43,840	10,019	31,253	16,742	6,160	7,329	1,276
North Dakota	7,740	21	28	7,691	5,470	1,747	527	2	1,126
Ohio	7,069	463	618	5,988	38,987	21,865	1,344	70	12,322
Oklahoma	23,508	12,801	1,461	9,246	19,768	21,961	4,547	84	15,942
Oregon	808	220	511	77	14,072	3,185	2,270	21	866
Pennsylvania	3,423	1,121	2,037	265	48,013	24,777	8,269	7,711	1,544
Rhode Island	2,605	82	2,444	79	5,963	4,483	302	3,863	231
South Carolina	37,184	10,429	16,873	9,882	23,131	9,522	2,897	3,617	1,787
South Dakota	3,608	63	6	3,539	5,763	1,216	514	1	653
Tennessee	2,648	327	2,084	237	25,343	5,338	2,619	1,000	975
Texas	114,196	63,861	7,657	42,678	76,523	38,018	18,205	1,536	14,389
Utah	5,613	304	206	5,103	13,639	14,608	2,343	24	11,422
Vermont	53	11	28	14	4,657	590	316	1	238
Virginia	92,683	25,708	53,010	13,965	37,597	77,825	19,931	34,348	4,334
Washington	39,387	20,071	11,946	7,370	27,633	23,397	5,869	14,543	1,917
West Virginia	561	206	311	44	10,682	1,834	1,286	86	439
Wisconsin	564	280	200	84	21,623	2,957	1,960	10	892
Wyoming	3,393	6	1	3,386	3,386	1,034	212	-	780

- Represents zero. ¹ Includes Other Defense Activities (ODA) not shown separately.

Source: U.S. Department of Defense, Directorate for Information Operations and Reports, *Selected Manpower Statistics*, annual; <<http://www.dior.whs.mil/mmid/Pubs.htm>>.

Table 500. Military Personnel on Active Duty by Location: 1980 to 2004

[In thousands (2,051 represents 2,051,000). As of September 30]

Location	1980	1985	1990	1995	1999	2000	2001	2002	2003	2004
Total	2,051	2,151	2,046	1,518	1,386	1,384	1,385	1,412	1,434	1,427
Shore-based ¹	1,840	1,920	1,794	1,351	1,241	1,237	1,244	1,262	1,287	1,291
Afloat ²	211	231	252	167	145	147	141	150	148	136
United States ³	1,562	1,636	1,437	1,280	1,133	1,127	1,130	1,181	1,182	1,139
Foreign countries	489	515	609	238	253	258	255	230	253	288

¹ Includes Navy personnel temporarily on shore. ² Includes Marine Corps. ³ Includes Puerto Rico and Island areas.

Source: U.S. Department of Defense, Directorate for Information Operations and Reports, *Selected Manpower Statistics*, annual; <<http://www.dior.whs.mil/mmid/Pubs.htm>>.

Table 501. **Department of Defense Personnel: 1950 to 2004**

[In thousands (1,459 represents 1,459,000.) As of end of fiscal year, see text, Section 8. Includes National Guard, Reserve, and retired regular personnel on extended or continuous active duty. Excludes Coast Guard. Other officer candidates are included under enlisted personnel]

Year	Army						Navy ²						Marine Corps				Air Force				
	Total ^{1, 2}	Male		Female		Total ¹	Male		Female		Total ¹	Male		Female		Total ¹	Male		Female		
		Officers	Enlisted	Officers	Enlisted		Officers	Enlisted	Officers	Enlisted		Officers	Enlisted	Officers	Enlisted		Officers	Enlisted	Officers	Enlisted	Officers
1950	1,459	593	69	512	4.4	6.6	381	43	330	2.4	2.7	74	7	66	-	0.5	411	55	350	1.5	3.8
1955	2,935	1,109	117	978	5.2	7.7	661	72	577	2.9	5.7	205	18	185	0.1	2.1	960	134	815	3.1	8.3
1960	2,475	873	97	762	4.3	8.3	617	67	540	2.7	5.4	174	16	153	0.1	1.5	815	126	677	3.7	5.7
1965	2,654	969	108	846	3.8	8.5	670	75	583	2.6	5.3	190	17	172	0.1	1.4	825	128	685	4.1	4.7
1970	3,065	1,323	162	1,142	5.2	11.5	691	78	600	2.9	5.8	260	25	233	0.3	2.1	791	125	648	4.7	9.0
1975	2,128	784	98	640	4.6	37.7	535	62	449	3.7	17.5	196	19	174	0.3	2.8	613	100	478	5.0	25.2
1976	2,082	779	94	634	4.8	43.8	525	60	439	3.5	19.3	192	19	171	0.4	3.1	585	95	452	5.0	29.2
1977	2,075	782	92	634	5.7	46.1	530	59	443	3.8	19.5	192	19	169	0.4	3.5	571	91	435	5.4	34.6
1978	2,062	772	92	619	6.3	50.5	530	59	442	4.0	21.3	191	18	167	0.4	4.7	570	89	429	6.0	41.1
1979	2,027	759	90	602	6.9	55.2	523	58	432	4.4	25.0	185	18	161	0.5	5.5	560	89	413	7.3	46.4
1980	2,051	777	91	612	7.6	61.7	527	58	430	4.9	30.1	189	18	164	0.5	6.2	558	90	404	8.5	51.9
1981	2,083	781	94	610	8.3	65.3	540	60	435	5.3	34.6	191	17	165	0.5	7.1	570	90	413	9.1	54.4
1982	2,109	780	94	609	9.0	64.1	553	61	444	5.7	37.3	192	18	165	0.6	7.9	583	92	421	9.9	54.5
1983	2,123	780	97	602	9.5	66.5	558	62	444	6.3	40.8	194	19	166	0.6	8.3	592	94	428	10.6	55.3
1984	2,138	780	98	601	10.2	67.1	565	62	448	6.6	42.6	196	19	167	0.6	8.6	597	95	430	11.2	55.9
1985	2,151	781	99	599	10.8	68.4	571	64	449	6.9	45.7	198	19	169	0.7	9.0	602	96	431	11.9	58.1
1986	2,169	781	99	597	11.3	69.7	581	65	457	7.3	47.2	200	19	170	0.6	9.2	608	97	434	12.4	61.2
1987	2,174	781	96	596	11.6	71.6	587	65	462	7.2	47.7	200	19	170	0.6	9.1	607	94	432	12.6	63.2
1988	2,138	772	95	588	11.8	72.0	593	65	466	7.3	49.7	197	19	168	0.7	9.0	576	92	405	12.9	61.5
1989	2,130	770	95	584	12.2	74.3	593	65	464	7.5	52.1	197	19	168	0.7	9.0	571	91	399	13.4	63.7
1990	2,044	732	92	553	12.4	71.2	579	64	451	7.8	52.1	197	19	168	0.7	8.7	535	87	370	13.3	60.8
1991	1,986	711	91	535	12.5	67.8	570	63	444	8.0	51.4	194	19	166	0.7	8.3	510	84	350	13.3	59.1
1992	1,807	610	83	449	11.7	61.7	542	61	417	8.3	51.0	185	18	157	0.6	7.9	470	77	320	12.7	56.1
1993	1,705	572	77	420	11.1	60.2	510	58	390	8.3	49.3	178	17	153	0.6	7.2	444	72	302	12.3	54.5
1994	1,610	541	74	394	10.9	59.0	469	54	355	8.0	47.9	174	17	149	0.6	7.0	426	69	287	12.3	54.0
1995	1,518	509	72	365	10.8	57.3	435	51	324	7.9	47.9	175	17	150	0.7	7.4	400	66	266	12.1	52.1
1996	1,472	491	70	347	10.6	59.0	417	50	308	7.8	46.9	175	17	149	0.8	7.8	389	64	256	12.0	52.8
1997	1,439	492	69	346	10.4	62.4	396	48	290	7.8	44.8	174	17	148	0.8	8.5	377	62	246	12.0	53.8
1998	1,407	484	68	340	10.4	61.4	382	47	280	7.8	42.9	173	17	146	0.9	8.9	368	60	237	12.0	54.2
1999	1,386	479	67	337	10.5	61.5	373	46	271	7.7	43.9	173	17	145	0.9	9.3	361	58	232	11.8	54.6
2000	1,384	482	66	339	10.8	62.9	373	46	272	7.8	43.8	173	17	146	0.9	9.5	356	57	227	11.8	55.0
2001	1,385	481	65	337	11.0	63.4	378	46	273	8.0	46.6	173	17	145	1.0	9.6	354	57	224	12.0	55.6
2002	1,414	487	66	341	11.5	63.2	385	47	279	8.2	47.3	174	17	146	1.0	9.5	368	59	233	12.9	58.6
2003	1,434	499	68	352	12.0	63.5	382	47	276	8.2	47.3	178	18	149	1.1	9.6	375	61	237	13.5	60.0
2004	1,427	500	69	358	12.3	61.0	373	46	273	8.1	46.1	178	18	149	1.1	9.7	377	61	242	13.6	60.2

- Rounds to zero. ¹ Includes cadets, midshipmen and other not shown separately. ² Beginning 1980, excludes Navy Reserve personnel on active duty for Training and Administration of Reserves (TARS).

Source: U.S. Department of Defense, *Selected Manpower Statistics*, annual. See also <<http://www.dior.whs.mil/mmjd/pubs.htm>>.

Table 502. U.S. Military Personnel on Active Duty in Selected Foreign Countries: 1995 to 2004

[As of September 30]

Country	1995	1998	1999	2000	2001	2002	2003	2004
In foreign countries ¹ . . .	238,064	259,871	252,763	257,817	254,788	230,484	252,764	287,802
Ashore	208,836	218,957	207,131	212,858	211,947	208,479	226,570	265,594
Afloat	29,228	40,914	45,632	44,959	42,841	22,005	26,194	20,208
Argentina	26	27	24	26	22	28	28	29
Australia	314	322	323	175	803	171	574	196
Austria	35	24	31	18	24	20	24	21
Bahamas, The	36	24	23	24	64	22	25	41
Bahrain	618	916	1,511	949	2,065	1,560	1,514	1,712
Belgium	1,689	1,645	1,649	1,554	1,578	1,458	1,526	1,474
Bosnia and Herzegovina	1	6,912	5,800	5,708	3,116	3,082	3,041	951
Brazil	50	36	43	38	39	27	34	37
Canada	214	156	150	156	163	148	141	156
Chile	28	21	30	26	337	28	25	23
China	30	53	57	74	57	61	53	63
Colombia	44	30	41	224	63	39	54	55
Cuba (Guantanamo)	5,129	1,348	1,030	688	557	549	697	682
Cyprus	24	52	38	41	30	28	34	20
Denmark	37	38	32	26	28	22	21	22
Diego Garcia ²	897	715	670	625	590	548	528	816
Dominican Republic	13	11	11	12	14	55	14	14
Ecuador	86	367	21	20	22	35	33	32
Egypt	1,123	1,041	892	499	500	433	385	348
El Salvador	25	21	30	27	26	23	21	23
France	67	60	73	67	71	74	93	77
Germany	73,280	69,663	65,538	69,203	70,998	68,701	74,796	76,058
Greece	489	441	652	678	506	593	583	473
Greenland	131	130	129	125	153	88	139	133
Haiti	1,616	356	59	21	13	15	13	26
Honduras	193	594	513	351	394	402	414	448
Hungary	16	1,379	87	375	29	19	15	18
Iceland	1,982	1,651	1,681	1,636	1,743	1,665	1,747	1,491
India	27	21	25	20	18	19	26	30
Indonesia	46	41	50	51	43	28	21	24
Israel	46	35	35	36	35	36	36	34
Italy	12,007	11,519	11,530	11,190	11,704	12,466	13,152	12,606
Japan	39,134	40,364	40,338	40,159	40,217	41,848	40,519	36,365
Jordan	24	35	27	29	18	32	24	25
Kenya	40	86	95	21	62	43	33	33
Korea, Republic of	36,016	36,880	35,913	36,565	37,605	37,743	41,145	40,840
Kuwait	771	3,921	4,011	4,602	4,208	567	(³)	(³)
Macedonia, The Former Yugoslav, Republic of	591	442	1,100	347	351	146	41	40
Mexico	36	25	33	29	27	31	30	32
Netherlands	687	685	673	659	676	629	703	701
Norway	57	96	95	81	83	123	86	84
Oman	27	97	101	251	673	31	32	34
Pakistan	28	22	26	22	21	31	33	33
Philippines	126	29	84	79	35	86	107	47
Portugal	1,066	1,033	1,024	1,005	1,005	992	1,094	1,006
Qatar	2	25	39	52	116	71	2,997	273
Russia	60	56	88	101	20	78	78	84
Saudi Arabia	1,077	4,873	5,552	7,053	4,805	776	953	235
Serbia and Montenegro	13	37	6,410	5,427	5,679	2,804	319	1,814
Singapore	166	152	167	411	160	167	171	237
South Africa	24	34	32	34	31	32	31	31
Spain	2,799	3,219	2,127	2,007	1,990	2,621	1,893	2,012
Switzerland	26	21	18	19	18	19	18	18
Thailand	99	124	120	526	113	125	132	122
Tunisia	20	14	13	12	15	17	15	15
Turkey	3,111	2,518	2,312	2,006	2,153	1,587	2,021	1,762
Ukraine	5	15	18	16	10	13	13	14
United Arab Emirates	30	313	679	402	204	21	73	149
United Kingdom	12,131	10,156	11,311	11,207	11,318	10,258	11,616	11,469
Venezuela	35	28	30	28	31	27	21	28
Operation Iraqi Freedom ⁴	(X)	(X)	(X)	(X)	(X)	(X)	183,002	170,647

X Not applicable. ¹ Includes areas not shown separately. ² British Indian Ocean Territory. ³ See footnote 4. ⁴ Total (in/around Iraq as of September 30)-includes Reserve/National Guard.

Source: U.S. Department of Defense, *Selected Manpower Statistics*, annual. See also <<http://www.dior.whs.mil/mmid/pubs.htm>>.

Table 503. U.S. Active Duty Military Deaths by Manner of Death: 1980 to 2004

[As of end of Dec. 31. Table reflects addition of calendar years 2003-2004 data and updates to death figures throughout.]

Manner of death	1980-2004	1980	1990	1995	1997	1998	1999	2000	2001	2002	2003	2004
Deaths, total	38,503	2,392	1,507	1,040	817	827	796	758	891	999	1,410	1,887
Accident	21,757	1,556	880	538	433	445	436	398	437	547	560	565
Hostile action	1,331	-	-	-	-	-	-	-	3	18	344	737
Homicide	1,995	174	74	67	42	26	37	34	49	51	41	40
Illness	6,956	419	277	174	170	168	150	138	185	190	232	252
Pending	210	-	-	-	-	10	13	-	1	6	17	163
Self-inflicted	5,353	231	232	250	159	161	145	151	140	160	197	126
Terrorist attack	426	1	1	7	-	3	-	17	55	-	-	-
Undetermined	475	11	43	4	13	14	15	20	21	27	19	4

- Represents zero.

Source: U.S. Department of Defense, Directorate for Information Operations and Reports, Statistical Information Analysis Division, Personnel; <http://www.dior.whs.mil/mmid/casualty/castop.htm> (released 8 July 2005).

Table 504. Armed Forces Personnel—Summary of Major Conflicts

[For Revolutionary War, number of personnel serving not known, but estimates range from 184,000 to 250,000; for War of 1812, 286,730 served; for Mexican War, 78,718 served. Dates of the major conflicts may differ from those specified in various laws providing benefits for veterans.]

Item	Unit	Civil War ¹	World War I	World War II	Korean conflict	Vietnam conflict	Persian Gulf War
Personnel serving ²	1,000	2,213	4,735	³ 16,113	⁴ 5,720	⁵ 8,744	2,233
Average duration of service	Months	20	12	33	19	23	(NA)
Service abroad: Personnel serving	Percent	(NA)	53	73	656	(NA)	(NA)
Average duration ⁷	Months	(NA)	6	16	13	(NA)	(NA)
Casualties: ⁶ Battle deaths ²	1,000	140	53	292	34	⁹ 47	(Z)
Other deaths	1,000	224	63	114	3	11	(Z)
Wounds not mortal ²	1,000	282	204	671	103	⁹ 153	(Z)
Draftees: Classified	1,000	777	24,234	36,677	9,123	⁵ 75,717	(X)
Examined	1,000	522	3,764	17,955	3,685	⁵ 8,611	(X)
Rejected	1,000	160	803	6,420	1,189	⁵ 3,880	(X)
Inducted	1,000	46	2,820	10,022	1,560	⁵ 1,759	(X)

NA Not available. X Not applicable. Z Fewer than 500. ¹ Union forces only. Estimates of the number serving in Confederate forces range from 600,000 to 1.5 million. ² Source: U.S. Department of Defense, *Selected Manpower Statistics*, annual. ³ Covers Dec. 1, 1941, to Dec. 31, 1946. ⁴ Covers June 25, 1950, to July 27, 1953. ⁵ Covers Aug. 4, 1964, to Jan. 27, 1973. ⁶ Excludes Navy. Covers July 1950, through Jan. 1955. Far East area only. ⁷ During hostilities only. ⁸ For periods covered, see footnotes 3, 4, and 5. ⁹ Covers Jan. 1, 1961, to Jan. 27, 1973. Includes known military service personnel who have died from combat related wounds.

Source: Except as noted, the President's Commission on Veterans' Pensions, *Veterans' Benefits in the United States*, Vol. 1, 1956; and U.S. Department of Defense, unpublished data; <http://www.dior.whs.mil/mmid/casualty/castop.htm>.

Table 505. Military Personnel on Active Duty by Rank or Grade: 1990 to 2004

[In thousands (2,043.7 represents 2,043,700). As of Sept. 30]

Rank/grade	1990	1995	2000	2001	2002	2003	2004
Total	2,043.7	1,518.2	1,384.3	1,385.1	1,411.6	1,434.4	1,426.8
General-Admiral	(Z)	(Z)	(Z)	(Z)	(Z)	(Z)	(Z)
Lieutenant General-Vice Admiral	0.1	0.1	0.1	0.1	0.1	0.1	0.1
Major General-Rear Admiral (U)	0.4	0.3	0.3	0.3	0.3	0.3	0.3
Brigadier General-Rear Admiral (L)	0.5	0.4	0.4	0.4	0.4	0.4	0.4
Colonel-Captain	14.0	11.7	11.3	11.2	11.4	11.6	11.5
Lieutenant Colonel-Commander	32.3	28.7	27.5	27.2	28.2	28.5	28.4
Major-Lieutenant Commander	53.2	43.9	43.2	43.1	43.6	44.1	44.0
Captain-Lieutenant	106.6	84.3	68.1	66.0	66.5	68.1	69.5
1st Lieutenant-Lieutenant (JG)	37.9	26.1	24.7	25.7	28.1	29.9	31.1
2nd Lieutenant-Ensign	31.9	25.6	26.4	28.1	29.0	29.1	26.9
Chief Warrant Officer W-5	(Z)	(Z)	0.1	0.1	0.1	0.1	0.1
Chief Warrant Officer W-4	3.0	2.2	2.0	1.9	2.0	2.1	1.9
Chief Warrant Officer W-3	5.0	4.5	3.8	3.9	4.3	4.6	4.1
Chief Warrant Officer W-2	8.4	7.4	6.7	6.5	6.2	6.2	6.0
Warrant Officer W-1	3.2	2.0	2.1	2.2	2.3	2.4	3.1
E-9	15.3	11.1	10.2	10.4	10.6	10.8	10.7
E-8	38.0	28.8	26.0	26.7	27.0	27.7	27.1
E-7	134.1	109.3	97.7	98.4	101.9	101.4	99.6
E-6	239.1	180.5	164.9	164.9	170.0	172.4	173.1
E-5	361.5	261.4	229.5	239.7	242.5	250.7	251.1
E-4	427.8	317.2	251.0	240.1	248.1	264.5	264.1
E-3	280.1	197.1	196.3	210.4	219.6	222.1	220.1
E-2	140.3	99.7	99.0	92.4	91.8	85.1	84.3
E-1	97.6	63.4	80.0	72.5	64.7	59.2	55.8
Cadets and Midshipmen	13.3	12.1	12.5	12.8	12.5	12.6	12.6

Z Fewer than 50.

Source: U.S. Department of Defense, Directorate of Information Operations and Reports, *Selected Manpower Statistics*, annual. See also <http://www.dior.whs.mil/mmid/military/miltop.htm>.

Table 506. Military Reserve Personnel: 1990 to 2004

[As of September 30. The Ready Reserve includes the Selected Reserve which is scheduled to augment active forces during times of war or national emergency, and the Individual Ready Reserve which, during times of war or national emergency, would be used to fill out Active, Guard and Reserve units, and which would also be a source for casualty replacements; Ready Reservists serve in an active status (except for the Inactive National Guard—a very small pool within the Army National Guard). The Standby Reserve cannot be called to active duty, other than for training, unless authorized by Congress under "full mobilization," and a determination is made that there are not enough qualified members in the Ready Reserve in the required categories who are readily available. The Retired Reserve represents a lower potential for involuntary mobilization.]

Reserve status and branch of service	1990	1995	2000	2001	2002	2003	2004
Total reserves¹	1,688,674	1,674,164	1,276,843	1,249,043	1,222,337	1,188,851	1,166,937
Ready reserve	1,658,707	1,648,388	1,251,452	1,224,121	1,199,321	1,167,101	1,145,035
Army ²	1,049,579	999,462	725,771	713,251	699,548	682,522	663,209
Navy	240,228	267,356	184,080	168,454	159,098	152,855	148,643
Marine Corps	81,355	103,668	99,855	99,377	97,944	98,868	101,443
Air Force	270,313	263,011	229,009	230,182	229,798	219,895	219,159
Coast Guard	17,232	14,891	12,737	12,857	12,933	12,961	12,581
Standby reserve	29,967	25,776	25,391	24,922	23,016	21,750	21,902
Army	788	1,128	701	753	726	744	715
Navy	11,791	12,707	7,213	5,650	4,051	2,520	2,502
Marine Corps	1,424	216	895	507	605	685	992
Air Force	15,369	11,453	16,429	17,826	17,430	17,578	17,340
Coast Guard	595	272	153	186	204	223	353
Retired reserve	462,371	505,905	573,305	580,785	590,018	601,611	614,904
Army	223,919	259,553	296,004	299,233	304,524	308,820	315,477
Navy	111,961	97,532	109,531	111,485	112,374	113,485	115,210
Marine Corps	9,101	11,319	12,937	13,352	13,672	13,926	14,319
Air Force	117,390	137,501	154,833	156,715	159,448	165,380	169,898

¹ Less retired reserves. ² Includes Army National Guard. ³ Includes Air National Guard.

Source: U.S. Department of Defense, *Official Guard and Reserve Manpower Strengths and Statistics*, quarterly. See also <http://www.dior.whs.mil/mmid/pubs.htm>.

Table 507. Ready Reserve Personnel Profile—Race and Sex: 1990 to 2004

[In thousands (1,658.7 represents 1,658,700). As of September 30]

Year	Race					Hispanic ²	Sex			
	Total ¹	White	Black	Asian	American Indian		Officer		Enlisted	
							Male	Female	Male	Female
1990	1,658.7	1,304.6	272.3	14.9	7.8	83.1	226.8	40.5	1,204.7	186.7
1992	1,876.4	1,459.5	309.7	20.2	9.3	95.4	232.7	44.7	1,382.4	216.6
1993	1,858.1	1,440.7	310.5	21.3	9.2	98.2	232.5	46.3	1,365.6	213.7
1994	1,795.8	1,380.9	298.3	22.4	9.0	99.1	223.9	46.2	1,315.8	210.0
1995	1,648.4	1,267.7	274.5	22.0	8.8	96.2	209.9	44.7	1,196.8	196.9
1996	1,536.6	1,179.0	249.8	21.5	8.6	93.1	196.9	43.6	1,108.8	187.4
1997	1,451.0	1,113.7	230.6	21.7	8.4	91.5	188.7	43.2	1,037.6	181.5
1998	1,353.4	1,033.9	210.4	21.7	7.8	88.2	175.9	40.3	964.1	173.1
1999	1,288.8	980.0	202.6	22.6	7.6	88.9	166.2	38.4	911.2	173.1
2000	1,251.5	942.2	199.6	26.7	8.4	91.8	159.4	36.9	879.9	175.3
2001	1,224.1	912.7	198.4	27.9	8.5	94.3	158.0	36.6	852.2	177.3
2002	1,199.3	891.3	193.2	27.9	8.8	96.0	152.1	35.6	835.2	176.4
2003	1,167.1	865.7	187.5	25.4	8.5	98.0	145.1	34.0	813.7	174.3
2004	1,145.0	845.3	181.3	26.2	9.1	100.2	141.9	33.6	799.7	169.8

¹ Race subgroups do not sum to equal the total. "Pacific Islanders, Other, and Unknowns" are not listed. ² Persons of Hispanic origin may be of any race.

Source: U.S. Department of Defense, *Official Guard and Reserve Manpower Strengths and Statistics*, annual. See also <http://www.dior.whs.mil/mmid/pubs.htm>.

Table 508. National Guard—Summary: 1980 to 2004

[In thousands (368 represents 368,000). As of September 30]

Item	Unit	1980	1985	1990	1995	2000	2001	2002	2003	2004
Army National Guard:										
Units ¹	Number	3,379	4,353	4,055	5,872	5,300	5,200	5,150	5,100	5,100
Personnel ²	1,000	368	438	444	375	353	352	352	351	343
Females	1,000	17	23	31	31	38	42	43	44	(NA)
Funds obligated ³	Bil. dol.	1.8	4.4	5.2	6.0	6.9	7.7	8.0	10.0	18.3
Value of equipment	Bil. dol.	7.6	18.8	29.0	33.0	35.0	35.0	35.0	36.0	526.0
Air National Guard:										
Units ¹	Number	1,054	1,184	1,339	1,604	1,550	1,500	1,500	1,500	1,500
Personnel ²	1,000	96	109	118	110	106	109	112	108	108
Females	1,000	8	12	(NA)	16	(NA)	(NA)	(NA)	(NA)	(NA)
Funds obligated ³	Bil. dol.	1.7	2.8	3.2	4.2	5.6	5.8	6.8	6.4	7.6
Value of equipment (est.) ⁶	Bil. dol.	5.2	21.4	26.4	38.3	44.0	44.0	44.0	44.0	44.0

NA Not available. ¹ Includes units on active duty. ² Officers and enlisted personnel. ³ Federal funds; includes personnel, operations, maintenance, and military construction. ⁴ Decrease due to units being mobilized for Gulf war operations. ⁵ Decreased due to equipment left overseas by mobilized units. ⁶ Beginning 1985, increase due to repricing of aircraft to current year dollars to reflect true replacement value. Beginning 1995, includes value of aircraft and support equipment.

Source: National Guard Bureau, *Annual Review of the Chief, National Guard Bureau*; and unpublished data. See also <http://www.ang.af.mil> and <http://www.army.mil>.

Table 509. Veterans by Sex, Period of Service, and State: 2004

[In thousands (24,523 represents 24,523,000). As of September 30. VetPop 2004 Ver 1.0 is the Department of Veterans Affairs (VA's) new official estimate and projection of the veteran population as of December 31, 2004. It is based on published Census 2000 data that has been supplemented by special data extracts prepared for the VA Office of the Actuary by the Census Bureau. This estimate and projection is also based on data provided by the Defense Manpower Data Center on service member separations from active duty, information from the DoD Office of the Actuary, and Department of Veterans Affairs administrative data from the Veterans Benefits Administration and the Veterans Health Administration.]

State	Total veterans ^{1, 2}			Gulf War ³	Vietnam era	Korean conflict	World War II	Peacetime
	Total	Male	Female					
United States	24,523	22,849	1,675	4,065	8,064	3,376	3,877	6,244
Alabama	426	396	30	81	143	62	59	108
Alaska	67	60	7	18	27	5	4	17
Arizona	555	513	42	93	177	87	97	135
Arkansas	268	251	17	46	89	37	42	69
California	2,311	2,146	165	361	775	330	384	580
Colorado	428	393	35	89	155	50	50	108
Connecticut	269	254	15	28	85	41	53	69
Delaware	81	75	6	13	27	11	12	22
District of Columbia	37	34	3	6	12	6	7	10
Florida	1,788	1,659	129	277	530	294	371	434
Georgia	760	694	66	179	258	84	78	203
Hawaii	107	99	9	20	39	15	16	25
Idaho	133	124	9	28	44	17	19	32
Illinois	897	844	52	133	283	123	152	228
Indiana	551	519	32	84	178	71	80	152
Iowa	266	252	13	37	88	39	45	64
Kansas	246	231	16	43	84	32	39	59
Kentucky	360	338	22	62	121	48	51	92
Louisiana	367	340	27	72	120	47	54	90
Maine	144	134	9	20	49	21	22	38
Maryland	486	443	43	95	158	59	66	132
Massachusetts	491	462	28	54	150	76	99	127
Michigan	837	790	47	116	274	109	132	224
Minnesota	427	404	23	55	147	58	64	114
Mississippi	240	223	18	49	76	34	34	60
Missouri	555	520	34	85	182	78	85	145
Montana	103	96	7	16	37	14	15	25
Nebraska	159	149	11	28	53	24	24	37
Nevada	244	225	19	41	86	35	33	64
New Hampshire	131	123	8	18	45	18	19	37
New Jersey	583	552	30	62	175	91	118	152
New Mexico	180	166	15	32	64	25	26	44
New York	1,172	1,105	67	137	350	176	225	309
North Carolina	767	708	59	154	253	99	102	198
North Dakota	55	52	4	10	19	7	8	13
Ohio	1,052	990	62	155	336	137	170	281
Oklahoma	355	332	23	65	126	48	52	83
Oregon	367	342	25	53	130	47	58	94
Pennsylvania	1,146	1,083	63	134	352	170	227	296
Rhode Island	91	86	5	11	29	14	18	23
South Carolina	414	382	31	86	142	54	52	106
South Dakota	73	68	5	13	24	11	11	17
Tennessee	541	505	36	97	188	69	70	143
Texas	1,682	1,552	130	354	583	209	224	408
Utah	151	142	9	29	49	21	24	35
Vermont	58	54	4	7	19	8	9	16
Virginia	751	677	74	196	263	88	86	180
Washington	633	583	49	122	231	76	82	160
West Virginia	188	178	10	27	64	27	30	46
Wisconsin	475	448	27	65	153	65	74	129
Wyoming	55	51	4	11	20	7	7	12

¹ Veterans serving in more than one period of service are counted only once in the total. ² Current civilians discharged from active duty, other than for training only without service-connected disability. ³ Service from August 2, 1990, to the present. Source: Department of Veterans Affairs, Office of Policy, Planning & Preparedness. Annual Report of the Secretary of Veterans Affairs <<http://www.va.gov/vetdata/ProgramStatistics/index.htm>>.

Table 510. Veterans Living by Age and Period of Service: 2004

[In thousands (24,793 represents 24,793,000). As of September 30. Includes those living outside U.S. See headnote, Table 509]

Age	Total veterans	Wartime veterans					Peacetime veterans
		Total ¹	Gulf War ²	Vietnam era	Korean conflict	World War II	
Total	24,793	18,477	4,105	8,147	3,423	3,916	6,316
Under 35 years old	2,007	1,946	1,946	-	-	-	61
35-39 years old	1,332	768	768	-	-	-	564
40-44 years old	1,732	520	520	-	-	-	1,212
45-49 years old	1,906	738	383	393	-	-	1,168
50-54 years old	2,172	1,858	267	1,731	-	-	314
55-59 years old	3,572	3,448	151	3,409	-	-	124
60-64 years old	2,553	1,762	48	1,755	-	-	791
65 years old and over	9,520	7,437	22	859	3,423	3,916	2,083
Female, total	1,692	1,130	647	262	80	178	562

- Represents or rounds to zero. ¹ Veterans who served in more than one wartime period are counted only once in the total. ² Service from August 2, 1990, to the present. Source: U.S. Dept. of Veterans Affairs, VetPop 2004, Ver 1.0, VA Office of the Actuary <<http://www.va.gov/vetdata/demographics>>.

Table 511. Veterans by Sex, Race, and Hispanic or Latino Origin: 2000

[In thousands (26,403.7 represents 26,403,700). As of April 1. Data are based on a sample from the census. See Appendix III.]

Characteristics	Total number	18 to 64 years	65 years and over
Total	26,403.7	16,740.2	9,663.5
Sex:			
Male	24,810.4	15,494.6	9,315.9
Female	1,593.3	1,245.6	347.7
White alone	22,573.0	13,710.5	8,862.5
Male	21,373.2	12,829.6	8,543.6
Female	1,199.9	881.0	318.9
Black or African American alone	2,572.0	2,021.9	550.1
Male	2,297.6	1,765.8	531.8
Female	274.4	256.1	18.3
American Indian/Alaska Native alone	195.9	160.3	35.6
Male	177.9	143.8	34.0
Female	18.0	16.5	1.5
Asian alone	284.3	198.4	85.9
Male	261.3	178.4	82.9
Female	23.0	20.0	3.0
Native Hawaiian, and other Pacific Islander alone	28.6	23.9	4.6
Male	25.6	21.2	4.4
Female	3.0	2.7	0.2
Some other race alone	367.9	321.3	46.6
Male	333.3	288.5	44.8
Female	34.6	32.8	1.7
Hispanic or Latino origin ¹	1,139.2	905.5	233.7
Male	1,045.9	820.2	225.7
Female	93.3	85.3	8.0

¹ Persons of Hispanic or Latino origin may be of any race.

Source: U.S. Census Bureau, American FactFinder, 2000 Census of Population and Housing, Summary File 3, tables P39, PCT66A, PCT 66B, PCT66C, PCT66D, PCT 66E, PCT 66F, PCT66G, PCT 66H and P66 (accessed 30 March 2004) <<http://www.census.gov/Press-Release/www/2002/sumfile3.html>>.

Table 512. Veterans Benefits—Expenditures by Program and Compensation for Service-Connected Disabilities: 1980 to 2004

[In millions of dollars (23,187 represents \$23,187,000,000). For year ending September 30.]

Program	1980	1990	1995	1999	2000	2001	2002	2003	2004
Total	23,187	28,998	37,775	43,166	47,086	45,037	50,882	56,892	59,555
Medical programs	6,042	11,582	16,255	18,223	19,637	21,330	23,049	25,188	28,158
Construction	300	661	641	521	466	421	449	411	318
General operating expenses	605	811	954	989	1,016	1,222	1,318	1,399	1,252
Compensation and pension	11,044	14,674	17,765	21,069	22,012	23,276	25,573	27,995	29,937
Vocational rehabilitation and education	2,350	452	1,317	1,584	1,610	1,786	2,170	2,565	2,684
All other ¹	2,846	818	844	780	2,345	-2,999	-1,676	-666	-2,795
Compensation for service connected disabilities ²	6,104	9,284	11,644	14,560	15,511	16,593	18,584	20,855	22,387

¹ Includes insurance, indemnities and miscellaneous funds and expenditures. (Excludes expenditures from personal funds of patients.) ² Represents Veterans receiving compensation for service-connected disabilities.

Source: U.S. Dept. of Veterans Affairs, *Expenditure and Workload*, annual. See also <<http://www.va.gov/vetdata/index.htm>>.

Table 513. Veterans Compensation and Pension Benefits—Number on Rolls by Period of Service and Status: 1980 to 2004

[In thousands (4,646 represents 4,646,000), except as indicated. As of Sept. 30. Living refers to veterans receiving compensation for disability incurred or aggravated while on active duty and war veterans receiving pension and benefits for non-service connected disabilities. Deceased refers to deceased veterans whose dependents were receiving pensions and compensation benefits]

Period of service and veteran status	1980	1990	1995	2000	2001	2002	2003	2004
Total	4,646	3,584	3,330	3,236	3,218	3,285	3,369	3,432
Living veterans	3,195	2,746	2,669	2,672	2,669	2,745	2,832	2,899
Service connected	2,273	2,184	2,236	2,308	2,321	2,398	2,485	2,556
Non-service connected	922	562	433	364	348	347	347	343
Deceased veterans	1,451	838	662	564	549	540	538	533
Service connected	358	320	307	307	307	310	314	318
Non-service connected	1,093	518	355	257	241	230	224	215
Prior to World War I	14	4	2	1	1	1	1	(Z)
Living	(Z)	(Z)	(Z)	(Z)	(Z)	(Z)	(Z)	(Z)
World War I	692	198	89	34	28	23	19	16
Living	198	18	3	(Z)	(Z)	(Z)	(Z)	(Z)
World War II	2,520	1,723	1,307	968	906	856	813	766
Living	1,849	1,294	961	676	624	583	546	506
Korean conflict ¹	446	390	368	323	313	308	306	302
Living	317	305	290	255	246	243	241	237
Peacetime	312	495	559	607	608	613	620	624
Living	262	444	514	567	569	575	583	587
Vietnam era ²	662	774	868	969	987	1,052	1,120	1,172
Living	569	685	766	848	862	922	983	1,028
Gulf War ³	(X)	(X)	138	334	376	431	490	552
Living	(X)	(X)	134	326	368	421	479	540

X Not applicable. Z Fewer than 500. ¹ Service during period June 27, 1950, to Jan. 31, 1955. ² Service from Aug. 5, 1964, to May 7, 1975. ³ Service from August 2, 1990 to the present.

Source: U.S. Dept. of Veterans Affairs, *Annual Report of the Secretary of Veterans Affairs to 1998; Annual Accountability Report* and unpublished data 1999 to 2004. See also <<http://www.va.gov/vetdata/index.htm>>.

Table 514. Homeland Security Funding by Agency

[In millions of dollars. (37,118.2 represents \$37,118,200,000) For year ending September 30. A total of 33 agencies comprise Federal homeland security funding. Department of Homeland Security (DHS) is the designated department to coordinate and centralize the leadership of many homeland security activities under a single department. In addition to DHS, the Departments of Defense (DoD), Energy (DoE), Health and Human Services (HHS), and Justice (DoJ), account for most of the total government-wide homeland security funding]

Agency	2003	2004	2005
Total Budget Authority, excluding Bioshield ^{1 2 3}	37,118.2	40,727.7	45,998.2
Department of Agriculture	299.9	411.1	599.9
Department of Commerce	111.6	124.6	166.7
Department of Defense ⁴	8,442.0	7,024.0	8,570.1
Department of Education	5.7	8.0	23.8
Department of Energy	1,246.9	1,364.0	1,562.0
Department of Health and Human Services	4,002.4	4,062.2	4,230.3
Department of Homeland Security ⁵	18,652.4	22,832.7	24,870.7
Department of Housing and Urban Development	1.6	1.7	2.0
Department of the Interior	47.4	82.9	65.0
Department of Justice	1,892.5	2,164.9	2,677.8
Department of Labor	69.4	52.4	56.1
Department of State	632.7	696.4	824.1
Department of Transportation	382.8	283.5	181.7
Department of the Treasury	80.0	90.4	101.1
Department of Veterans Affairs	154.3	271.3	280.4
Corps of Engineers	36.0	101.5	89.0
Environmental Protection Agency	132.9	131.0	106.8
Executive Office of the President	41.0	35.0	29.5
General Services Administration	67.1	78.9	65.2
National Aeronautics and Space Administration	205.0	207.0	218.0
National Science Foundation	284.6	340.0	342.2
Office of Personnel Management	3.0	3.0	3.0
Social Security Administration	132.0	143.4	159.4
District of Columbia	25.0	19.0	15.0
Federal Communications Commission	1.0	1.0	1.6
Intelligence Community Management Account	(X)	1.0	72.4
National Archives and Records Administration	10.1	16.0	17.1
Nuclear Regulatory Commission	47.0	66.8	59.2
Postal Service	(X)	(X)	503.0
Securities and Exchange Commission	5.0	5.0	5.0
Smithsonian Institution	82.8	78.3	75.0
United States Holocaust Memorial Museum	8.0	8.0	8.0
Corporation for National and Community Service	16.3	22.8	17.0

X Not applicable. ¹ Enacted Budget. ² The Federal spending estimates are for the Executive Branch's homeland security efforts. These estimates do not include the efforts of the Legislative or Judicial branches. ³ The Department of Homeland Security Appropriations Act, 2004, provided \$5.6 billion for Project BioShield, to remain available through 2013. Including this uneven funding stream can distort year-over-year comparisons. ⁴ In all tables, classified funds for the Intelligence Community are combined with the Department of Defense and titled "Department of Defense". ⁵ Excludes \$16 million dollars in supplemental appropriations provided to the Coast Guard in 2005.

Source: U.S. Office of Management and Budget, based on *Analytical Perspectives, Budget of the United States Government*, annual; <<http://www.whitehouse.gov/omb/>>.

Table 515. Homeland Security Funding by National Strategy Mission Area

[In millions of dollars. (37,118.2 represents \$37,118,200,000.) For homeland security funding analysis by OMB, agencies categorize their funding data based on the critical mission areas defined in the *National Strategy*.]

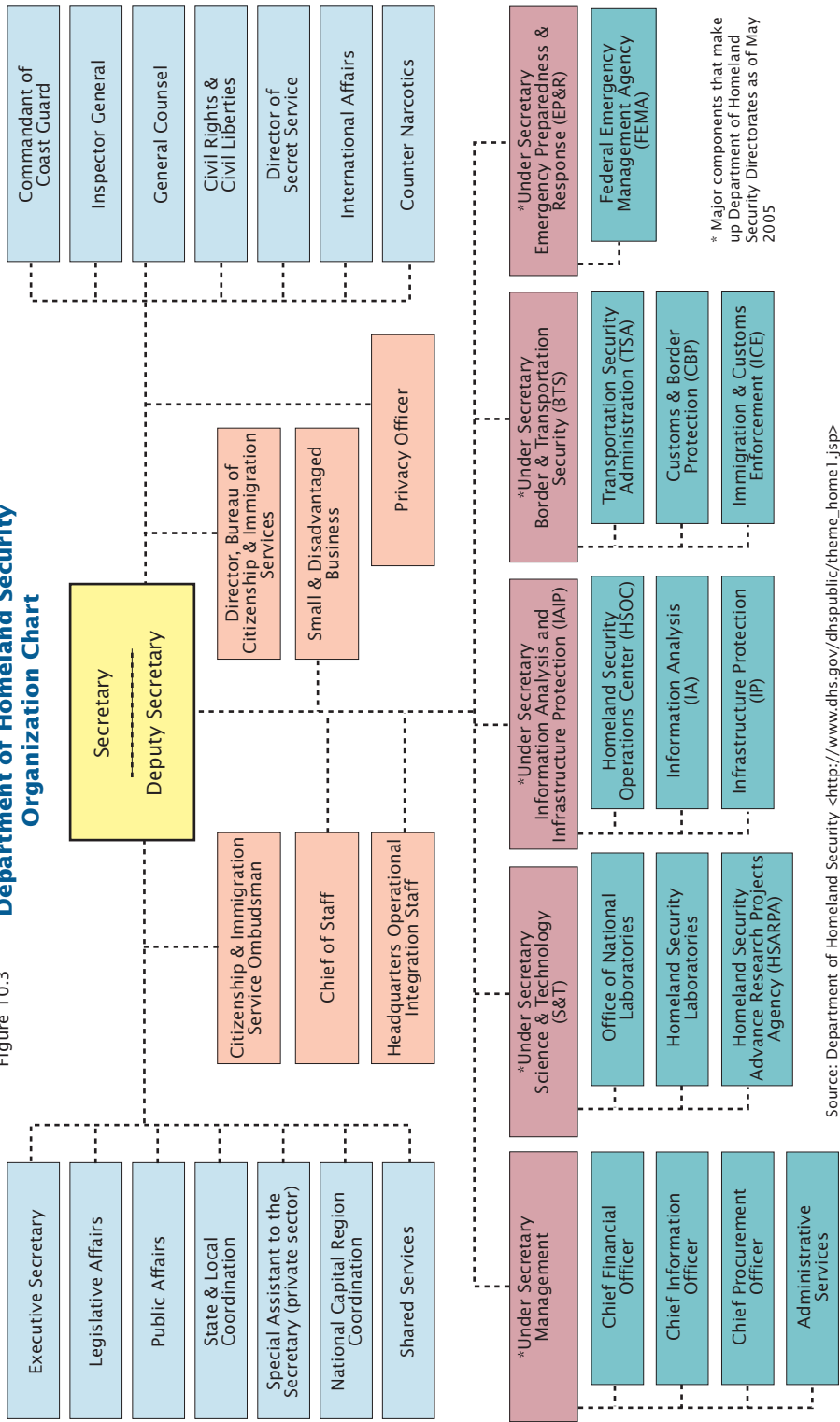
Mission area	2003	2004	2005
Total Budget Authority excluding Bioshield ^{1 2}	37,118.2	40,727.7	45,998.2
Intelligence and Warning	125.1	242.2	349.8
Border and Transportation Security	15,170.8	15840.8	17,550.2
Domestic Counterterrorism	2,509.2	3,379.3	3,944.5
Protecting Critical Infrastructure and Key Assets	12,893.1	12,279.1	14,939.4
Defending Against Catastrophic Threats	2,428.4	2,974.2	3,399.2
Emergency Preparedness and Response	3,873.2	6,002.6	5,765.2
Other	118.3	9.6	49.8

¹ Enacted budget. ² See footnote 3 in Table 514.

Source: U.S. Office of Management and Budget, based on *Analytical Perspectives, Budget of the United States Government*, annual; <<http://www.whitehouse.gov/omb/>>.

Figure 10.3

Department of Homeland Security Organization Chart



* Major components that make up Department of Homeland Security Directorates as of May 2005

Source: Department of Homeland Security <http://www.dhs.gov/dhspublic/theme_home1.jsp>

Table 516. Department of Homeland Security Total Budget Authority and Personnel by Organization: 2004 and 2005

[Expenditures in thousands of dollars (35,604,092 represents \$35,604,092,000). For the fiscal year ending September 30. Not all activities carried out by DHS constitute homeland security funding (e.g., Coast Guard search and rescue activities)]

Organization	Expenditures		Full-time employees	
	2004	2005	2004 ¹	2005
Adjusted total budget authority ^{2 3}	35,604,092	38,510,517	175,870	179,370
Border & Transportation Security (BTS) Under Secretary	8,058	9,617	67	67
United States--Visitor Immigrant Status Indicator Technology (US-VISIT)	328,053	340,000	64	102
U.S. Customs & Border Protection	5,997,287	6,416,398	40,076	40,616
U.S. Immigration & Customs Enforcement	3,669,615	3,845,178	14,751	14,486
Transportation Security Administration	4,578,043	5,405,375	51,346	52,615
Federal Law Enforcement Training Center	191,643	222,357	934	959
U.S. Coast Guard	6,994,222	7,558,560	45,532	46,809
U.S. Secret Service	1,334,128	1,375,758	6,381	6,516
Federal Emergency Management Agency (FEMA) (Emergency Preparedness & Response (EP&R) Directorate)	4,671,782	5,038,256	4,780	4,735
U.S. Citizenship & Immigration Services	1,549,733	1,775,000	9,795	9,937
Information Analysis & Infrastructure Directorate (IAIP)	834,348	893,708	729	803
Science & Technology Directorate (S&T)	912,751	1,115,450	180	320
State and Local Government Coordination and Preparedness (SLGCP) ⁴	4,192,120	3,984,846	146	220
Departmental Operations	394,435	524,457	632	683
Counter-Terrorism Fund	9,941	8,000	(X)	(X)
Inspector General	80,318	82,317	457	502

X Not applicable. ¹ Data comes from the Budget-in-Brief, Fiscal Year 2005. ² Reflects adjustment for rescission of prior year carryover funds. ³ Excludes BioShield funding, see footnote 3, Table 514. ⁴ For FY 2005, the Office of Domestic Preparedness became part of SLGCP.

Source: U.S. Department of Homeland Security, "Budget-in-Brief, Fiscal Year 2006," <<http://www.dhs.gov/interweb/assetlibrary/BudgetBIB-FY2006.pdf>> (accessed 7 February 2005).

Table 517. Homeland Security Grants by State/Territories: 2004 and 2005

[In thousands of dollars (3,115,550 represents \$3,115,550,000). For fiscal years ending September 30. Grants consist of the following programs: Citizen Corps Program (CCP), Law Enforcement Terrorism Prevention Program (LETPP), Emergency Management Performance Grant (EMPG), State Homeland Security Program (SHSP), Metropolitan Medical Response System (MMRS), and Urban Areas Security Initiative (UASI). Urban Areas Security Initiative program includes the Urban Areas Program, Transit Security Program, Port Security Grant Program and the Intercity Bus Program. **2005 grants** include all the programs as in 2004 except for Port Security Grant Program and the Intercity Bus Program. These programs have not yet been awarded as of May 2005]

State/Territory	2004	2005	State/Territory	2004	2005	State/Territory	2004	2005
Total	3,115,550	2,518,763	LA	76,005	42,670	RI	23,485	16,074
U.S.	3,050,076	2,475,564	ME	23,776	16,609	SC	40,643	26,284
AL	38,723	28,153	MD	64,014	42,250	SD	19,996	14,809
AK	21,218	14,879	MA	69,288	62,436	TN	54,157	32,605
AZ	53,371	41,705	MI	76,981	64,075	TX	195,671	138,570
AR	28,815	21,561	MN	60,236	35,311	UT	27,033	20,308
CA	349,894	282,622	MS	31,795	22,081	VT	19,594	14,326
CO	45,583	36,799	MO	66,618	46,952	VA	61,902	38,185
CT	46,523	24,080	MT	20,689	15,318	WA	73,593	45,330
DE	20,206	14,984	NE	24,376	23,656	WV	25,270	18,289
DC	49,231	96,144	NV	37,196	28,386	WI	51,343	37,251
FL	142,667	101,285	NH	24,110	16,776	WY	18,809	13,934
GA	70,815	54,918	NJ	95,795	60,811			
HI	26,865	23,130	NM	24,946	18,499			
ID	22,621	16,805	NY	178,492	298,351	PR ¹	37,864	25,169
IL	114,925	102,593	NC	65,392	46,609	VI	6,918	4,612
IN	55,534	38,996	ND	19,421	14,376	AS	5,776	4,279
IA	29,918	22,291	OH	103,582	77,823	GU	7,016	4,706
KS	29,064	21,784	OK	32,824	29,974	NM	7,960	4,333
KY	45,537	31,419	OR	41,665	34,820	RM	-	50
			PA	109,866	87,671	FM	-	50

- Represents zero. ¹ PR--Puerto Rico, VI--Virgin Islands, AS--America Samoa, GU--Guam, NM--Northern Mariana Islands, RM--Marshall Islands, and FM--Micronesia.

Source: U.S. Department of Homeland Security, State and Local Government Coordination and Preparedness, Office for Domestic Preparedness, unpublished data. See also <<http://www.ojp.gov/odp>>.

Table 518. Coast Guard Migrant Interdictions by Nationality of Alien: 2000 to 2004

[For the year ending September 30]

Year	Total	Haiti	Dominican Republic	China	Cuba	Mexico	Ecuador	Other
2000	4,210	1,113	499	261	1,000	49	1,244	44
2001	3,948	1,391	659	53	777	17	1,020	31
2002	4,104	1,486	1,777	80	666	32	1,608	55
2003	6,068	2,013	1,748	15	1,555	-	703	34
2004	10,899	3,229	5,014	68	1,225	86	1,189	88

- Represents zero. Source: U.S. Department of Homeland Security, United States Coast Guard, "Fact File, Migrants Statistics, Statistics." <<http://www.uscg.mil/hq/g-cp/comrel/factfile/index.htm>> (accessed 3 June 2005).

Table 519. Customs and Border Protection (CBP)—Processed and Cleared Passengers, Planes, Vehicles, and Containers: 2000 to 2004

[For year ending September 30]

Characteristic	2000	2001	2002	2003	2004
Air					
Passenger ¹	80,512,207	79,674,803	69,316,987	70,854,290	78,267,680
Commercial plane ¹	829,318	839,221	768,879	789,805	823,757
Private plane	142,050	125,721	129,243	132,154	139,644
Land					
Passenger ^{2, 3}	397,312,173	381,477,331	333,651,738	329,998,234	326,692,741
Auto ²	127,094,722	129,576,724	118,306,795	120,376,489	121,415,504
Rail container	2,156,537	2,257,608	2,430,107	2,473,569	2,587,565
Truck ⁴	11,575,243	11,186,909	11,239,541	11,095,397	11,346,725
Sea					
Passenger ⁵	10,990,098	11,281,774	12,224,397	15,127,461	18,127,781
Vessel ⁶	211,242	214,610	211,922	203,635	190,701
Vessel container ⁷	5,813,244	5,709,974	7,283,475	8,821,847	9,796,282

¹ A commercial aircraft is any aircraft transporting passengers and/or cargo for some payment or other consideration, including money or services rendered. ² See Table 1256 for more details. ³ Includes pedestrians. ⁴ Trucks/containers entering the U.S. ⁵ Does not include passengers on ferries. ⁶ Number of vessels. The word vessel includes every description of water craft or other contrivance used or capable of being used as a means of transportation on water, does not include aircraft. ⁷ Number of vessel containers.

Source: U.S. Department of Homeland Security, Customs and Border Protection, *About CBP, Statistics and Accomplishments, National Workload Statistics, 2000–2004*. See also <<http://www.cbp.gov/xp/cgov/toolbox/about/accomplish/>> (released 1 June 2005).

Table 520. Deportable Aliens Located by Border Patrol Program: 2000 to 2004

[As of the end of September. Excludes Immigration and Customs Enforcement (ICE) investigations' data. Data for this table comes from the Performance Analysis System (PAS). This system captures aggregated data updated once a month by DHS offices.]

Border Patrol Sector	2000	2001	2002	2003	2004
Total	1,676,438	1,266,214	955,310	931,557	1,160,395
All southwest sectors	1,643,679	1,235,718	929,809	905,065	1,139,282
San Diego, CA	151,681	110,075	100,681	111,515	138,608
El Centro, CA	238,126	172,852	108,273	92,099	74,467
Yuma, AZ	108,747	78,385	42,654	56,638	98,060
Tucson, AZ	616,346	449,675	333,648	347,263	491,771
El Paso, TX	115,696	112,857	94,154	88,816	104,399
Marfa, TX	13,689	12,087	11,392	10,319	10,530
Del Rio, TX	157,178	104,875	66,985	50,145	53,794
Laredo, TX	108,973	87,068	82,095	70,521	74,706
McAllen, TX	133,243	107,844	89,927	77,749	92,947
All other sectors	32,759	30,496	25,501	26,492	21,113
Blaine, WA	2,581	2,089	1,732	1,380	1,354
Buffalo, NY	1,570	1,434	1,102	564	671
Detroit, MI	2,057	2,106	1,511	2,345	1,912
Grand Forks, ND	562	921	1,369	1,223	1,225
Havre, MT	1,568	1,305	1,463	1,406	986
Houlton, ME	489	685	432	292	263
Livermore, CA	6,205	5,211	4,371	3,565	1,850
Miami, FL	6,237	5,962	5,143	5,931	4,602
New Orleans, LA	6,478	5,033	4,665	5,151	2,889
Ramey, PR	1,731	1,952	835	1,688	1,813
Spokane, WA	1,324	1,335	1,142	992	847
Swanton, VT	1,957	2,463	1,736	1,955	2,701

Source: U.S. Department of Homeland Security, Office of Immigration Statistics, *Yearbook of Immigration Statistics, 2004*. See also <<http://uscis.gov/graphics/shared/aboutus/statistics/ybpage.htm>>. Data as of 10 June 2005.

Table 521. Border Patrol Enforcement Activities: 2000 to 2004

[As of September 30. Excludes Immigration and Customs Enforcement (ICE) investigations' data. Data for this table comes from the Performance Analysis System (PAS). This system captures aggregated data updated once a month by DHS offices.]

Activities	2000	2001	2002	2003	2004
Persons processed by the Border Patrol ¹	1,689,195	1,277,577	967,044	946,684	1,179,296
Deportable aliens located by the Border Patrol	1,676,438	1,266,214	955,310	931,557	1,160,395
Mexican aliens	1,636,883	1,224,046	917,994	882,012	1,085,006
Working in agriculture	1,330	1,248	1,821	1,908	1,647
Working in trades, crafts, industry, and service	2,167	2,678	2,897	3,856	3,634
Seeking employment	1,525,422	1,107,550	822,161	810,671	997,986
Canadian aliens	2,211	2,539	1,836	1,611	1,497
All others	37,344	39,629	35,480	47,934	73,892
Smugglers of aliens located	14,406	8,720	8,701	11,128	16,074
Aliens located who were smuggled into the United States	236,782	112,927	68,192	110,575	193,122
Seizures (conveyances)	17,269	5,892	7,250	9,355	18,024
Value of seizures (mil. dol.)	1,945	1,581	1,564	1,680	1,696
Narcotics	1,848	1,519	1,499	1,608	1,620
Other	97	62	65	72	75

¹ Includes deportable aliens located and non-deportable (e.g., U.S. citizens).

Source: U.S. Department of Homeland Security, Office of Immigration Statistics, *Yearbook of Immigration Statistics, 2004*. See also <<http://uscis.gov/graphics/shared/aboutus/statistics/ybpage.htm>>. Data as of 10 June 2005.

Table 522. Immigration and Customs Enforcement (ICE) Investigations Activities: 2000 to 2003

[As of September 30. Investigative activity for 2003 carried out by Immigration and Customs Enforcement (ICE). Prior to 2003, investigation activity was carried out by Immigration and Naturalization Service (INS).]

Activities	2000	2001	2002	2003
Criminal investigations: ¹				
Cases completed	90,519	89,222	78,841	82,236
Defendants prosecuted	3,802	2,962	2,309	3,138
Defendants convicted	3,022	2,219	1,496	1,858
Employer investigations: ²				
Cases completed	1,966	1,595	2,061	2,194
Warnings	282	169	124	479
Notice of Intent to Fine	178	100	53	162
Final orders	180	78	13	124
Arrests	953	735	485	445
Fraud investigations: ³				
Cases completed	3,733	3,721	2,527	3,050
Defendants prosecuted	483	397	253	347
Defendants convicted	259	214	142	250
Smuggling investigations: ⁴				
Cases completed	3,309	2,885	2,395	2,346
Smugglers arrested	4,139	3,139	3,330	2,663
Smuggled aliens arrested	46,001	32,429	19,278	14,418
Defendants prosecuted	2,618	2,124	2,106	2,185
Defendants convicted	1,474	1,174	1,252	1,418
Entered without inspection/status violators: ⁵				
Cases completed	38,311	25,301	23,067	27,240
Aliens arrested	14,963	11,162	10,538	9,319

¹ Criminal alien cases include large-scale organizations engaged in ongoing criminal activity and individual aliens convicted of crimes such as terrorism or drug trafficking. ² Employer investigations target employers of unauthorized aliens and include criminal investigations, administrative investigations, auxiliary investigations, ICE Headquarters Investigation Project, and Department of Labor ESA-91. In FY 2003, also includes statistics pertaining to Work Site Enforcement National Interest Investigations. ³ Fraud investigations seek to penetrate fraud schemes of all sizes and degrees of complexity which are used to violate immigration and related laws or to shield the true status of illegal aliens in order to obtain entitlement benefits. ⁴ Smuggling cases involve those which target persons or entities who bring, transport, harbor or smuggle illegal aliens into or within the United States. The decline in Performance Analysis System (PAS) investigation figures for smugglers arrested and smuggled aliens arrested from fiscal year 2002 to 2003, may partially be attributable to the DHS reorganization and shift of workload from some anti-smuggling units in Border Patrol Sectors to ICE Special Agent in Charge (SAC) offices. ⁵ Includes Entry Without Inspection (EWI), such as stowaways, or landed crewmen who were ordered detained on board, and status violators.

Source: U.S. Department of Homeland Security, Office of Immigration Statistics, *2003 Yearbook of Immigration Statistics*. See also <<http://uscis.gov/graphics/shared/aboutus/statistics/ybpage.htm>>. Data as of 10 June 2005.

Table 523. Convictions for Immigration and Naturalization Violations: 2000 to 2003

[As of September 30. Data for this table comes from the Performance Analysis System (PAS). This system captures aggregated data updated once a month by DHS offices.]

Violations	2000	2001	2002	2003
All violations ^{1 2}	20,751	21,055	21,042	22,479
Immigration violations	20,007	20,297	20,483	21,821
Entry of aliens illegally	12,733	13,378	13,371	14,199
Reentry of deported aliens	4,759	4,315	4,699	4,939
Bringing in, transporting, harboring illegal aliens	1,700	1,680	1,691	1,612
Fraud and false statements to obtain or confer immigration benefits	31	98	119	270
Fraud, forgery, misuse of visas, alien registration, and other documents	362	327	196	253
Fraud, forgery, misuse of identification documents	363	432	367	390
Conspiring to defraud the United States	(D)	(D)	5	6
Employing unauthorized aliens, peonage, false attestations for employment	49	19	25	72
Other immigration violations	9	47	10	80
Naturalization violations	181	168	146	137
False representation as citizens of United States	93	129	98	101
Fraud, misuse of citizen naturalization papers	3	4	7	6
Fraud, forgery, misuse of U.S. passports	85	35	41	30
Other violations	563	590	413	521
Racketeering	199	185	122	173
Terrorism, threat to national security	-	-	-	10
Money laundering and financial fraud	29	10	17	10
Weapons trafficking, unlawful possession by aliens	64	84	105	67
Drug trafficking	175	226	126	158
Obstructing justice	39	57	37	35
Alien prostitution	4	6	(D)	(D)
Other violations	53	22	5	53

D Figure withheld to avoid disclosure pertaining to a specific organization or individual. ¹ Data for fiscal years 2000-2003 have been revised due to recategorized statutes and adjusted classification for various violation codes. ² For FY 2000-2003, includes conviction data reported by Inspections Air, Land, Sea, Border Patrol, and Investigations offices.

Source: U.S. Department of Homeland Security, Office of Immigration Statistics, *2003 Yearbook of Immigration Statistics*. See also <<http://uscis.gov/graphics/shared/aboutus/statistics/ybpage.htm>>. Data as of 10 June 2005.

Table 524. Department Participation in the Control of Marijuana, Narcotics, and Dangerous Drug Traffic: 2000 to 2003

[As of the end of September. Department participation includes Border Patrol, Inspections and Investigations. Data for this table comes from the Performance Analysis System (PAS). This system captures aggregated data updated once a month by DHS offices.]

Year and seizure	Total	Type of contraband				
		Marijuana (lbs.)	Heroin (ozs.)	Cocaine (ozs.)	Dangerous drug pills (units)	Other
2000 ¹						
Number of seizures	12,143	9,914	225	1,020	470	514
Amount seized (X)	1,597,395	1,597,395	5,487	567,341	1,426,547	(X)
Estimated value of seizures (mil. dol.)	2,314	1,289	32	946	5	41
2001 ¹						
Number of seizures	11,387	9,201	190	1,074	380	542
Amount seized (X)	1,449,947	1,449,947	6,564	446,331	736,157	(X)
Estimated value of seizures (mil. dol.)	1,959	1,144	40	744	3	28
2002						
Number of seizures	10,231	8,289	160	991	250	541
Amount seized (X)	1,440,488	1,440,488	6,887	489,491	619,004	(X)
Estimated value of seizures (mil. dol.)	1,980	1,177	32	736	2	32
2003						
Number of seizures	10,284	8,528	119	742	362	533
Amount seized (X)	1,562,368	1,562,368	6,624	336,493	395,714	(X)
Estimated value of seizures (mil. dol.)	2,107	1,434	42	598	9	24

X Not applicable ¹ Revised data.

Source: U.S. Department of Homeland Security, Office of Immigration Statistics, *2003 Yearbook of Immigration Statistics*. See also <<http://uscis.gov/graphics/shared/aboutus/statistics/ybpage.htm>> released 10 June 2005).

Table 525. Prohibited Items Intercepted at U.S. Airport Screening Checkpoints: 2002 to 2004

[Passengers boarding aircraft in thousands (612,876 represents 612,876,000). For the calendar year. Transportation Security Administration (TSA) assumed responsibility for airport security on February 17, 2002, and by November 19, 2002, TSA assumed control over all passenger screenings from private contractors. TSA data are incomplete]

Year	2002	2003	2004
Passengers boarding aircraft total (1,000) ¹	612,876	646,275	697,701
Domestic	560,107	592,412	635,515
International	52,769	53,863	62,276
Total prohibited items	4,185,916	6,167,497	7,103,560
Knife ²	1,147,843	1,969,003	2,055,306
Other cutting items ³	2,063,729	3,029,318	3,409,724
Club ⁴	13,134	25,578	28,998
Box cutter ⁵	37,504	21,396	22,428
Firearm ⁶	983	638	254
Incendiary ⁷	83,086	485,792	697,242
Other ⁸	839,637	635,772	889,608

¹ Data comes from the Air Transport Association. ² Knife includes any length and type except round-bladed, butter, and plastic cutlery. ³ Other cutting instruments refers to, e.g., scissors, screwdrivers, swords, sabers, and ice picks. ⁴ Club refers to baseball bats, night sticks, billy clubs, bludgeons; etc. ⁵ Box cutter. ⁶ Firearm refers to items like pistols, revolvers, rifles, automatic weapons, shotguns, parts of guns and firearms. ⁷ Incendiaries refer to categories of ammunition and gunpowder, flammables/irritants, and explosives. ⁸ Other refers to tools, self-defense items, and sporting good (excluding baseball bats).

Source: U.S. Department of Homeland Security, Transportation Security Administration, unpublished data; 13 June 2005 <<http://www.tsa.gov>>; Air Transport Association of America, Washington, DC, Air Transport Annual Report, <<http://www.airlines.org/home/default.aspx>>.

Table 526. Federal Emergency Management Agency (FEMA) Declarations and Expenditures for Disasters: 2000 to 2004

[Expenditures in thousands of dollars (1,747,511 represents \$1,747,511,000). For calendar year. FEMA leads the federal government's role in preparing for, mitigating the effects of, responding to, and recovering from all domestic disasters, whether natural or manmade, including acts of terror]

Year	Declarations				Expenditures ¹
	Total disaster	Major disaster	Emergency	Fire Management Assistance	
2000	113	45	6	62	1,747,511
2001	100	45	10	45	11,297,969
2002	121	49	1	71	1,883,822
2003	123	56	19	48	2,377,908
2004	118	68	7	43	5,583,391

¹ Expenditures represent FEMA funding obligated as of 12/31/04. Expenditures for declared disasters within a calendar year represent obligations at the time data was collected. Figures will change as those disasters remaining open receive funding obligated for ongoing recovery and mitigation projects.

Source: U.S. Department of Homeland Security, Federal Emergency Management Agency, Library, and unpublished data. See also <<http://www.fema.gov/library/drcys.shtml>> (accessed 5 April 2005).